



402/4 Foreshore Boulevard Woollooware NSW

2 2 1

Situated on the 4th floor of the Crest Building, this two-bedroom apartment is sure to impress, tastefully appointed throughout, enjoying a sunny west facing aspect with Bay views.

Overdelivering with elegance and luxury, thoughtfully designed to maximise space and natural light, you can enjoy a holiday lifestyle 12 months a year. Full access to all resort-style amenities, and only moments to transport, shops, restaurants, golf courses, cycle way and Cronulla's famous beaches.

- * Spacious contemporary design with open plan living & dining area flows onto entertainer's balcony
- * Quality Bosch appliances feature in the designer kitchen with integrated dishwasher & island bench
- * Generously sized bedrooms both with built-in robes &

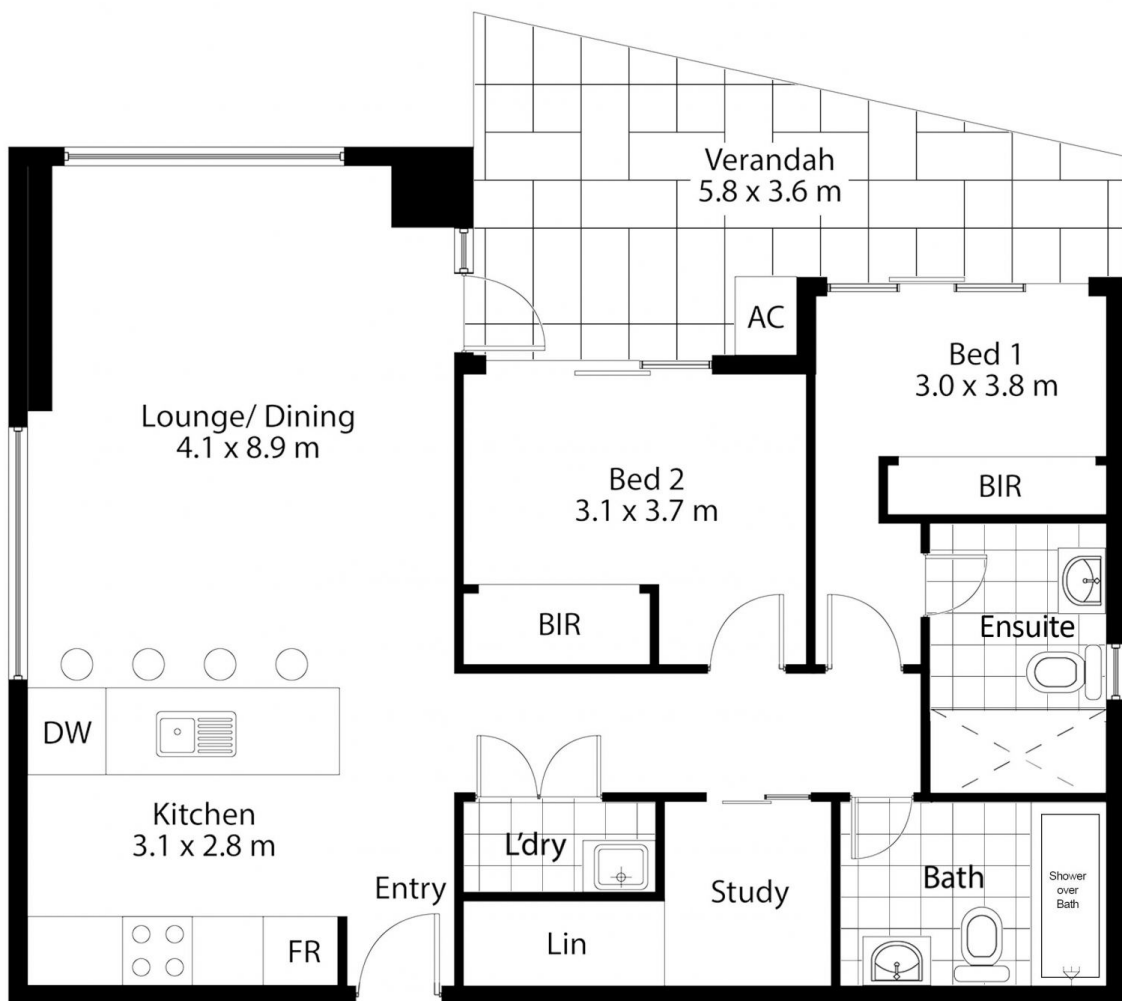
Price : \$ 970,000

View : <https://www.paynepacific.com.au/sale/nsw/sutherland/woollooware/residential/apartment/7723126>



Christian Payne
9544 0000

Single Car Space



402/4 Foreshore Boulevard, Woollooware

DISCLAIMER: All care has been taken in preparing this floor plan, however the accuracy is not guaranteed and no liability will be accepted for any reliance placed upon it
Produced by Sydney Media Projects, email: info@sydneymediaprojects.com.au