



### 3 Glandore Street Woollooware NSW

4 2 5

This home enjoys a bright sunny aspect, complete with its own wrap around front verandah, where you can sit and enjoy the morning sun whilst you overlook the green of the 7th hole of Cronulla Golf Course.

Relax and enjoy the multiple indoor and outdoor living areas, perfect for entertaining family and friends whilst enjoying the lifestyle this location has to offer.

Ideally located in close proximity to Woollooware High School, transport and the soon to be completed Bay Central (Woollooware Bay's new shopping precinct) and only a short distance to Cronulla and all it has to offer.

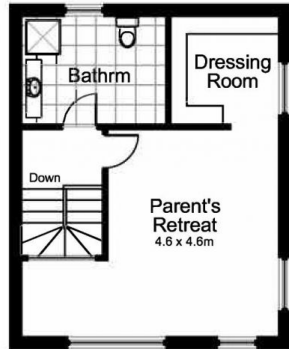
Features include:

\* Gourmet kitchen with quality appliances, gas cooktop, dishwasher and Caesarstone benchtop

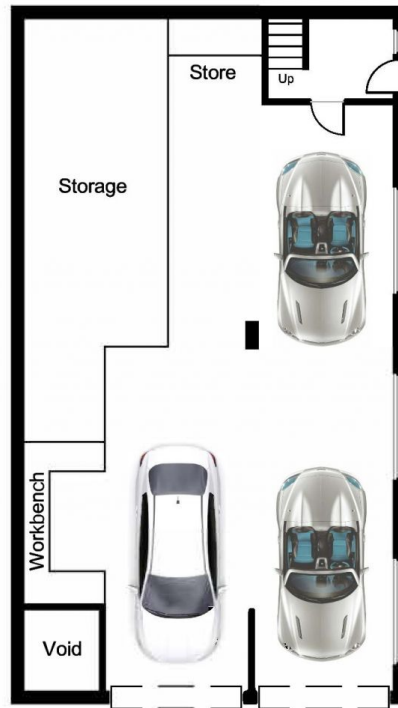
**Price** : \$ 2,690,000  
**Land Size** : 771.4 sqm  
**View** : <https://www.paynepacific.com.au/sale/nsw/utherland/woollooware/residential/house/7556632>



**Christian Payne**  
**9544 0000**

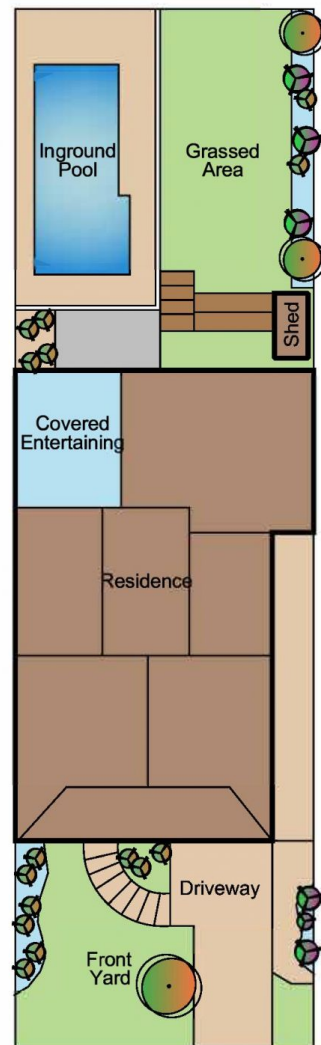
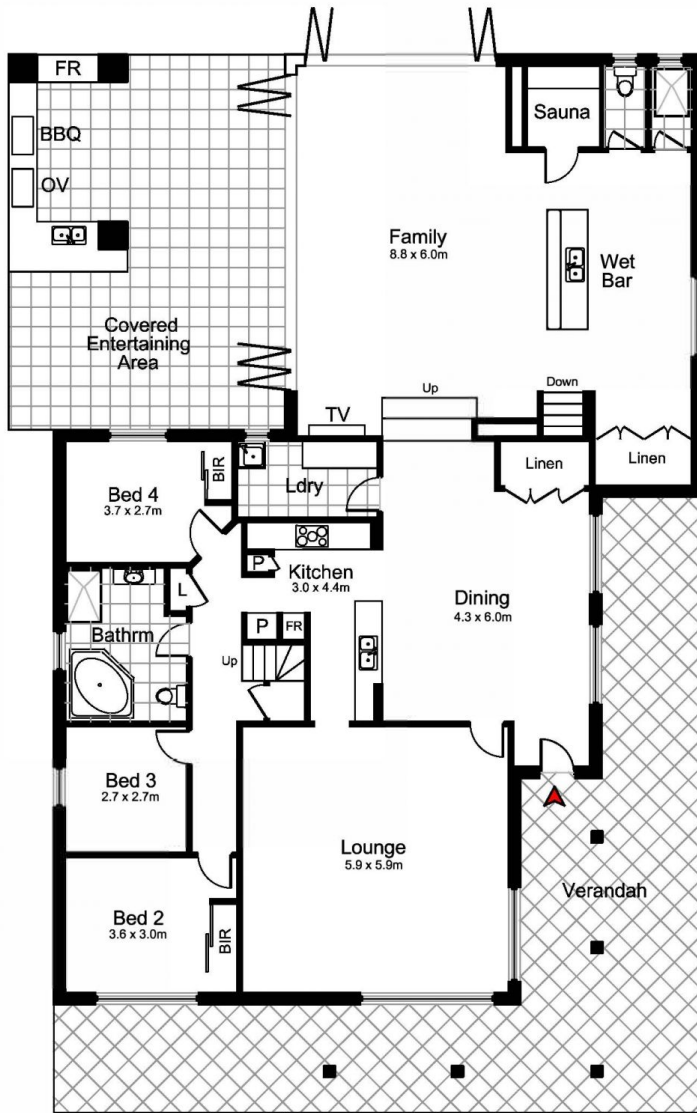


Upper Level



Lower Level

Garage  
6.7 x 13.0m



Site Plan

### 3 Glandore Street, WOOLLOOWARE

DISCLAIMER: All care has been taken in preparing this floor plan, however the accuracy is not guaranteed and no liability will be accepted for any reliance placed upon it.  
Produced by SYDNEY MEDIA PROJECTS mdr 0414 697 215 email: sydneymediaprojects@gmail.com