



**9/112 National Avenue Loftus NSW**

3 2 2

This impressive freestanding townhouse is designed for entertaining and a low maintenance lifestyle. Located in a highly sought-after neighbourhood and in close proximity to Loftus shops, schools and public transport. Ideal for first home buyers, downsizers, and investors alike.

**Price** : \$ 1,095,000  
**Land Size** : 272 sqm  
**View** : <https://www.paynepacific.com.au/sale/nsw/sutherland/loftus/residential/townhouse/7378877>

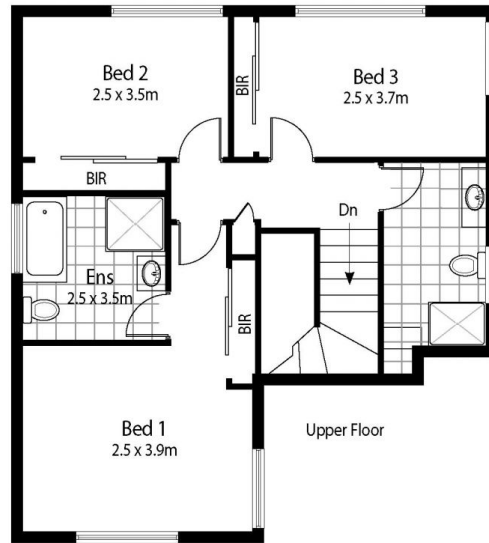
- \* Open plan living and dining areas with floating timber floors
- \* Three generous bedrooms all with built-in wardrobes
- \* Kitchen with stone benchtops, electric cooking and dishwasher
- \* Private courtyard with undercover area perfect for entertaining
- \* Two bathrooms, full bathroom with shower and bath off the main bedroom
- \* European style internal laundry, additional separate toilet downstairs



**Ryan Clark**  
9544 0000



**Christian Payne**  
9544 0000



## 9/112 National Ave, LOFTUS

DISCLAIMER: All care has been taken in preparing this floor plan, however the accuracy is not guaranteed and no liability will be accepted for any reliance placed upon it

Produced by Sydney Media Projects, email: [info@sydneymediaprojects.com.au](mailto:info@sydneymediaprojects.com.au)