



14/116-120 Elouera Road Cronulla NSW

2 1 1

Positioned in the heart of North Cronulla, this ground floor two bedroom apartment has a great layout and lots of natural light. Offering a convenient lifestyle just moments to Cronulla's beaches, transport, shops and schools.

Price : \$ 830,000

View : <https://www.paynepacific.com.au/sale/nsw/sutherland/cronulla/residential/apartment/7217130>

- * Combined living and dining area flowing to balcony
- * Neat kitchen with electric appliances
- * Generous sized bedrooms both with built-in wardrobes
- * Bathroom with separate bath and shower
- * Internal laundry, split system air-conditioning and ceiling fans
- * Single lock up garage with additional storeroom
- * Well maintained security complex

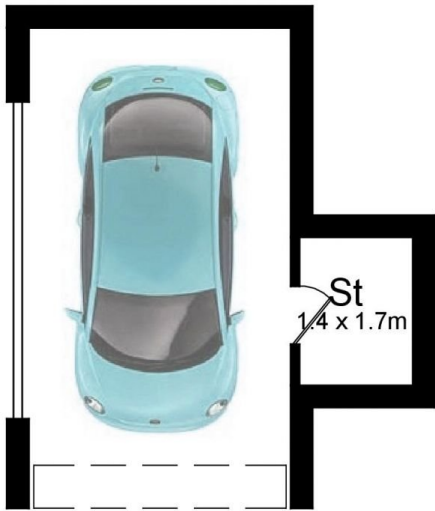
Agent:
Christian Payne 9544 0000
Ryan Clark 9544 0000



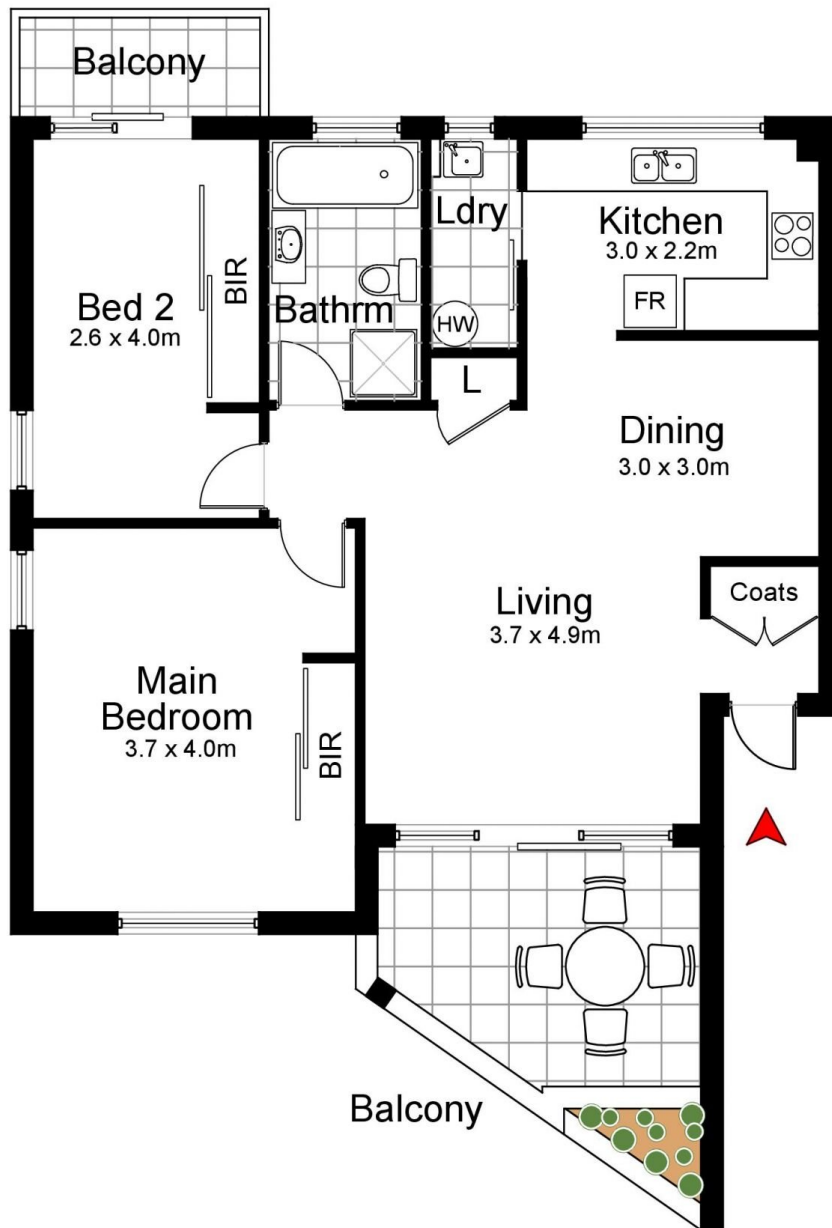
Christian Payne
9544 0000



Ryan Clark
9544 0000



Garage
3.1 x 5.8m



14/116-120 Elouera Road, CRONULLA

DISCLAIMER: All care has been taken in preparing this floor plan, however the accuracy is not guaranteed and no liability will be accepted for any reliance placed upon it.
Produced by PRODUCT PHOTOGRAPHY STUDIO mob: 0414 697 215 email: mgphoto@people.net.au