



43 Harrow Street Sylvania NSW

5 🏠 4 🚗 2 🚗

Embraced by breathtaking Northerly views across Georges River to Sydney CBD Skyline. This substantial brick home presents an exceptional opportunity to secure a sought-after waterfront lifestyle.

Land Size : 670.8 sqm
View : <https://www.paynepacific.com.au/sale/nsw/sutherland/sylvania/residential/house/7156483>

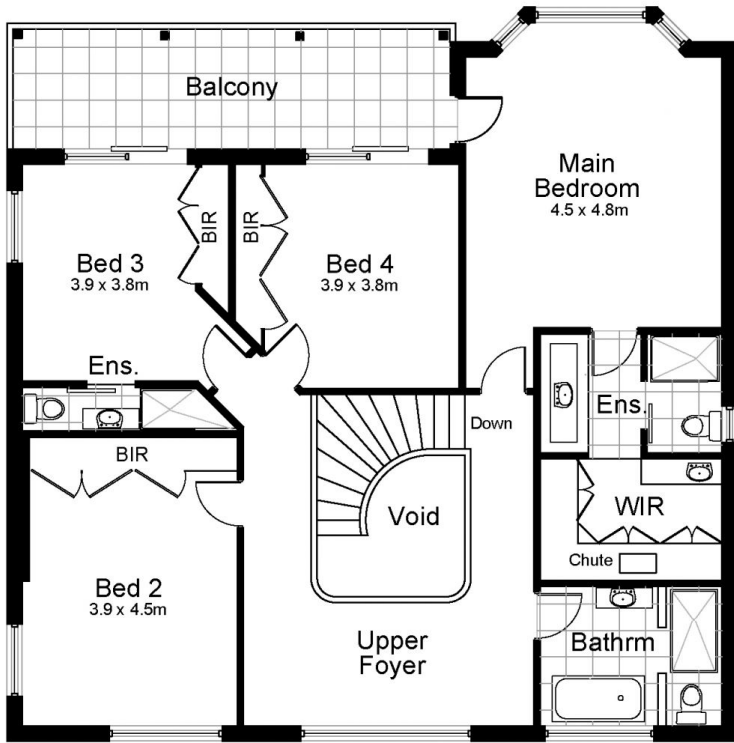
- * Enjoy your own deep waterfront facilities including jetty and pontoon, boat slip rails and private sandy beach.
- * Formal lounge with gas fireplace, separate dining area plus family room
- * Family size timber eat-in kitchen with gas cooking and stainless steel appliances
- * 4 bedrooms, 3 with access to covered balcony enjoying panoramic water views
- * Master bedroom with walk-in wardrobe, ensuite and kitchenette
- * Separate study, easily convertible to a 5th bedroom
- * Two additional bathrooms with ducted reverse cycle air



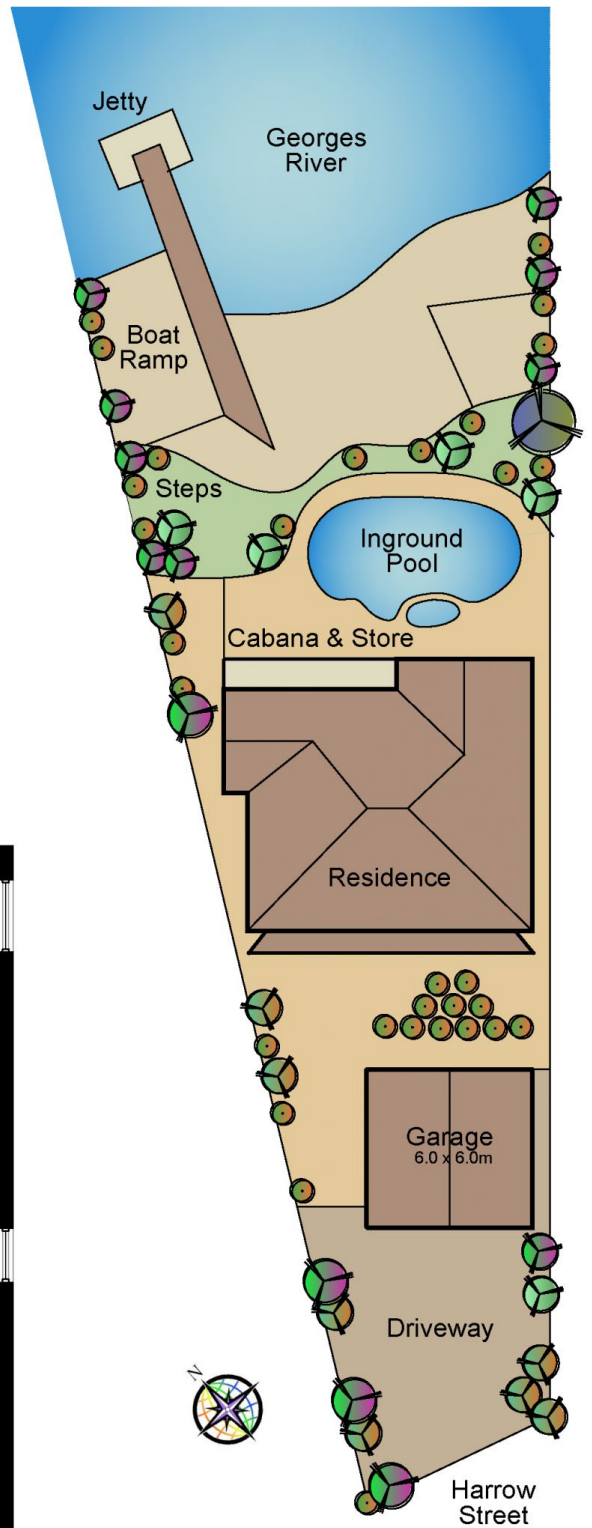
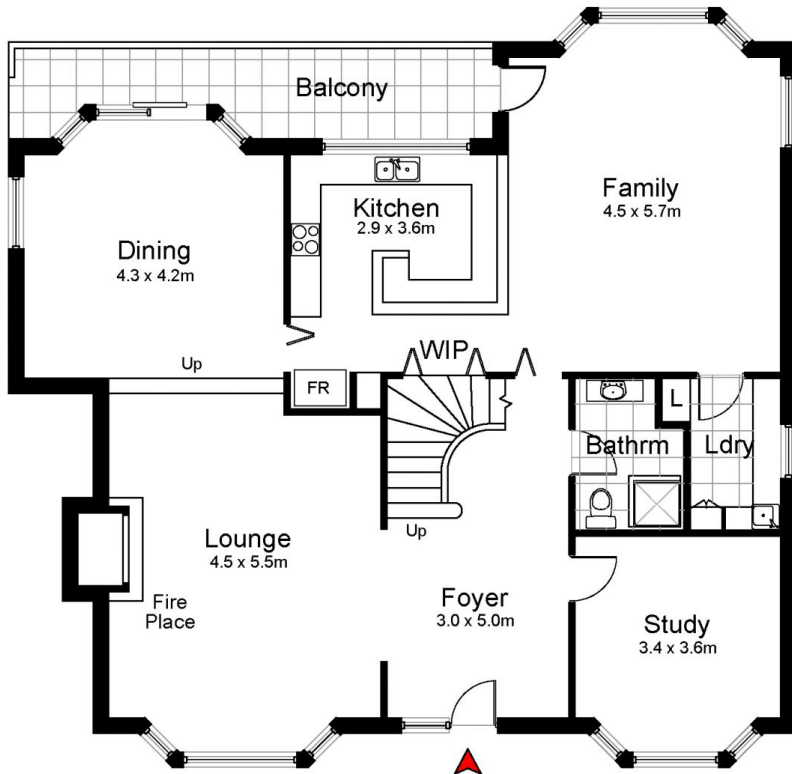
Christian Payne
9544 0000



Ryan Clark
9544 0000



Upper Level



Site Plan

43 Harrow Street, SYLVANIA

DISCLAIMER: All care has been taken in preparing this floor plan, however the accuracy is not guaranteed and no liability will be accepted for any reliance placed upon it. Produced by SYDNEY MEDIA PROJECTS mob: 0414 697 215 email: sydneymediaprojects@gmail.com