



## 289 Princes Highway Sylvania NSW

2 1 1

This quaint modern and well presented two bedroom house offers a convenient lifestyle close to shops and restaurants.

### Features

- High ceilings and loads of space and natural light
- Great indoor/outdoor living areas and air conditioning
- French doors to the balcony overlooking the level yard
- Timber floors throughout
- Open plan kitchen with stone bench tops overlooking the yard
- The main bedroom opens to the balcony and includes walk-in robe/study
- Charming bathroom with shower and separate bath
- West facing yard with filtered leafy sunlight
- Great location near shops and restaurants and a short drive to Westfield

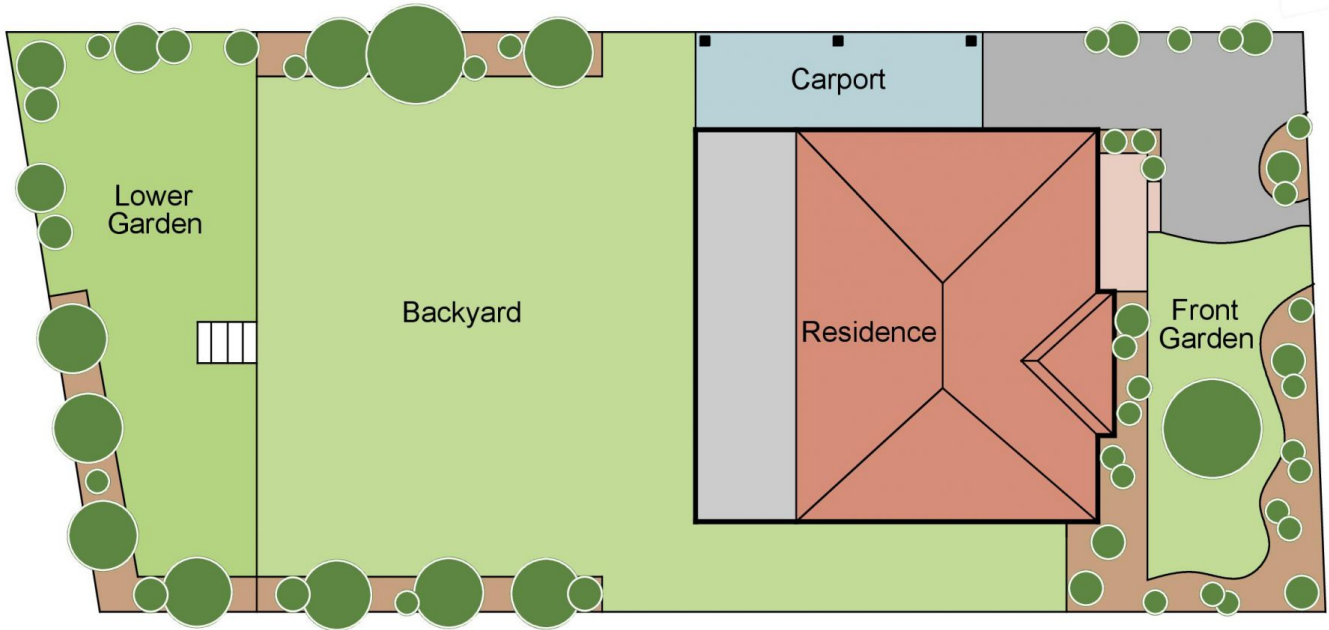
**Land Size** : 667 sqm  
**View** : <https://www.paynepacific.com.au/lease/nsw/sutherland/sylvania/residential/house/7082424>



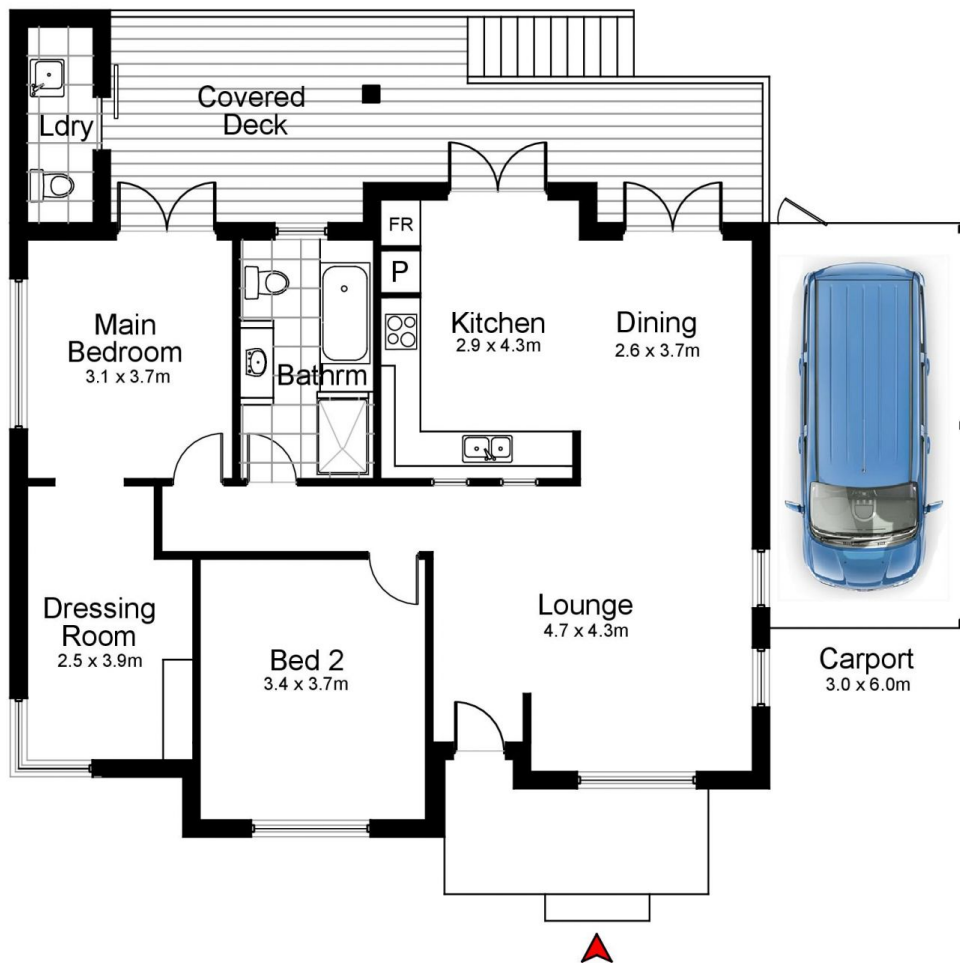
**Zac Colys**  
9544 0000



**Zoe Feltus**  
9544 0000



Site Plan



## 289 Princes Highway, SYLVANIA

DISCLAIMER: All care has been taken in preparing this floor plan, however the accuracy is not guaranteed and no liability will be accepted for any reliance placed upon it.  
Produced by SYDNEY MEDIA PROJECTS mob: 0414 697 215 email: sydneymediaprojects@gmail.com