



### 29 Wills Road Woolooware NSW

3 1 2

Set on a 575.4sqm (approx.) parcel of land, this single level brick home offers loads of potential and is conveniently positioned within close proximity to Woolooware Public School, Wills Road Shops, train station and Cronulla's Beaches.

- \* Three good-sized bedrooms, two with built-in wardrobes
- \* Spacious kitchen with stone benchtop, quality appliances and ample storage
- \* Separate living and dining areas flow onto alfresco entertaining area
- \* Large internal laundry with additional toilet
- \* Refurbished bathroom with shower and bath, separate toilet
- \* Single Garage with kitchenette and shower plus toilet
- \* Ample of off-street parking for boat, trailer and/or caravan
- \* Split system air conditioner & fireplace in living areas,

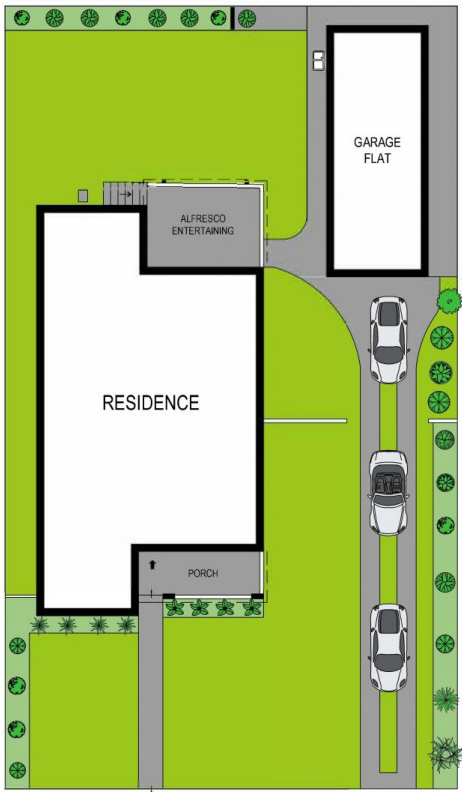
**Price** : \$ 1,970,000  
**Land Size** : 575.4 sqm  
**View** : <https://www.paynepacific.com.au/sale/nsw/utherland/woolooware/residential/house/6966940>



**Christian Payne**  
9544 0000

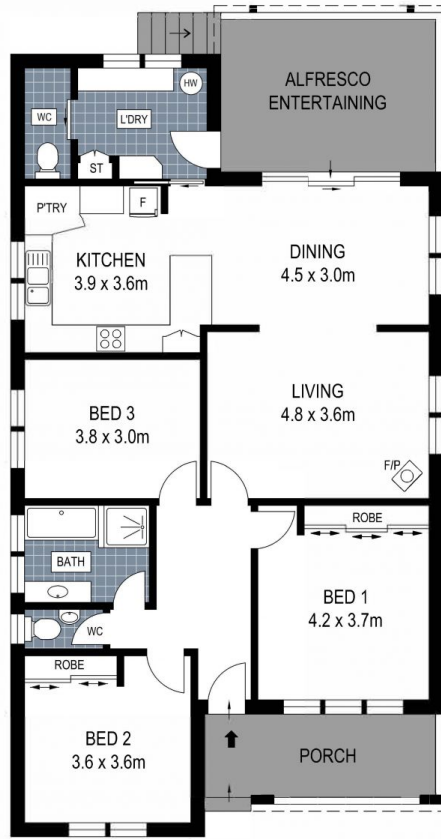


**Ryan Clark**  
9544 0000

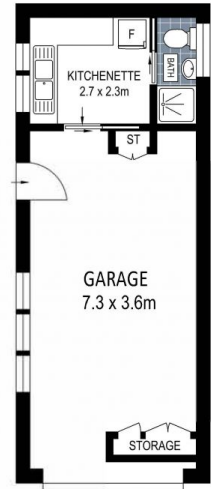


**SITE PLAN (NOT TO SCALE)**

ADDRESS:  
29 Wills Road, Woolooware



**GROUND FLOOR**



DISCLAIMER: THIS IS FOR ILLUSTRATIVE PURPOSES ONLY, ALL DIMENSIONS ARE APPROXIMATE AND IT DOES NOT CONSTITUTE PART OF ANY LEGAL DOCUMENTS.