



7/59 Wills Road Woollooware NSW

1 1

Quietly positioned on the first floor of this small complex, this superbly renovated North facing one bedroom apartment is conveniently located in the heart of North Woollooware within footsteps to the local village shops and railway station.

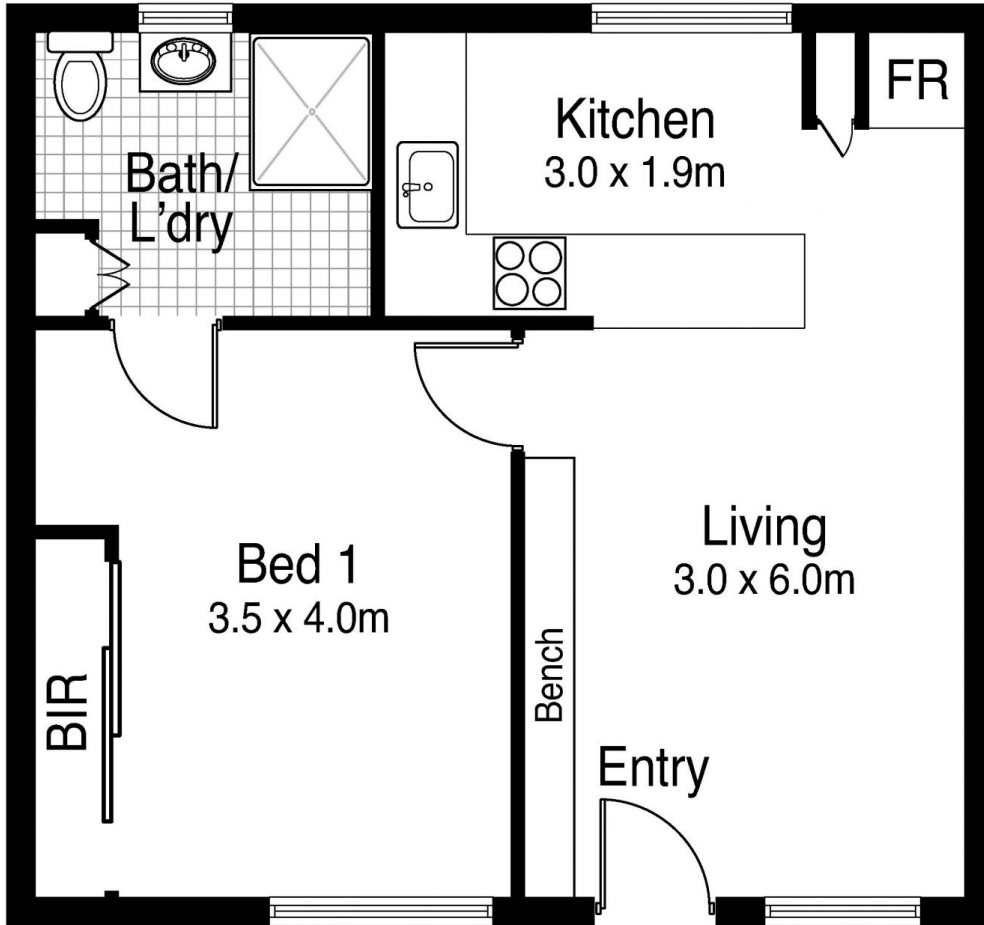
Building Size : 42 sqm
View : <https://www.paynepacific.com.au/sale/nsw/sutherland/woollooware/residential/apartment/6627642>

- * North facing and private with a sunny, leafy outlook
- * Intelligently designed kitchen with stone benchtops
- * Ideal opportunity for first home buyers or investors
- * Laundry incorporated into the ensuite bathroom
- * Small, low maintenance block of eight apartments
- * Conveniently located close to Woollooware shops and railway and with easy access to Cronulla's beaches, restaurants, Mall and cafes.



Christian Payne
95440000

Agent:
Christian Payne 9544 0000



7/59 Wills Road, Woollooware

DISCLAIMER: All care has been taken in preparing this floor plan, however the accuracy is not guaranteed and no liability will be accepted for any reliance placed upon it

Produced by Sydney Media Projects. email: info@sydneymediaprojects.com.au