



66 Beaumaris Drive Menai NSW

4 2 2

Surrounded by bush and featuring comfort, space and convenience, this expansive home is set on a large 825sqm block in a highly sought after, family friendly neighbourhood.

With new carpet throughout, the home presents immaculately, with four bedrooms upstairs all with built in robes and ceiling fans and the main bedroom has a huge ensuite, double vanity and spa bath.

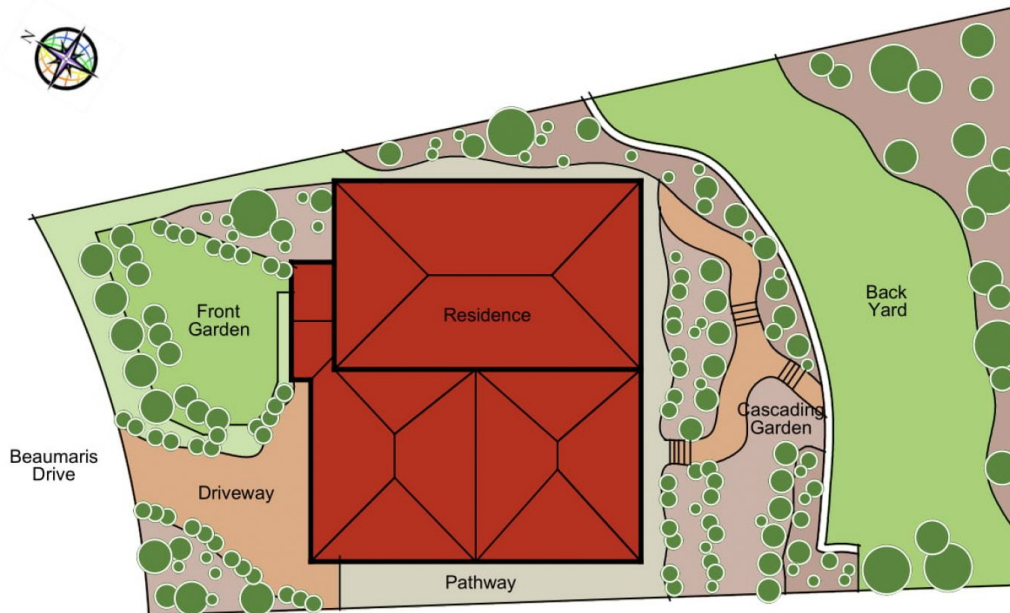
The kitchen is complete with quality appliances, stone benchtops and gas cooking with a leafy outlook to the bush surrounds and flows effortlessly into the informal dining and TV / rumpus area with air conditioning.

There is a huge, private, covered deck area which is great for year-round entertaining with built-in BBQ and fridges,

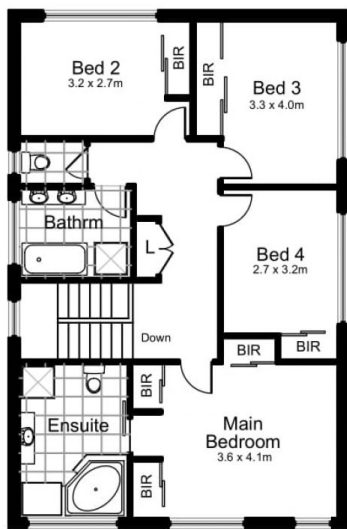
Price : \$ 1,242,000
Land Size : 825 sqm
View : <https://www.paynepacific.com.au/sale/nsw/sutherland/menai/residential/house/5874648>



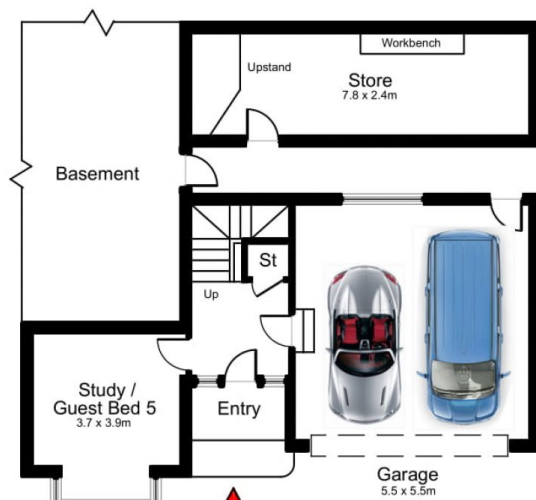
Christian Payne
9544 0000



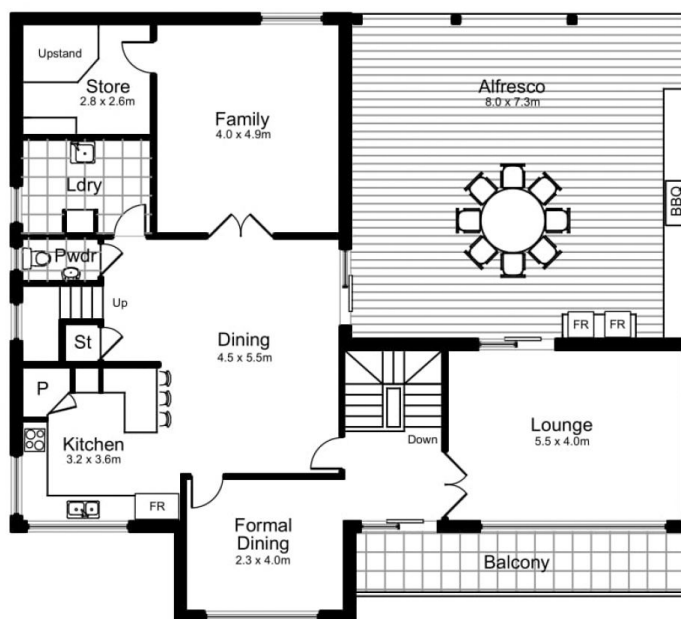
Site Plan



Upper Level



Lower Level



66 Beaumaris Drive, MENAI

DISCLAIMER: All care has been taken in preparing this floor plan, however the accuracy is not guaranteed and no liability will be accepted for any reliance placed upon it.
Produced by SYDNEY MEDIA PROJECTS mob: 0414 697 215 email: sydneymediaprojects@gmail.com