



### 192/360 Kingsway Caringbah NSW

3 2 2

Located on the top floor of the Catalina building, this north facing apartment presents beautifully. There is nothing to do just move straight on in.

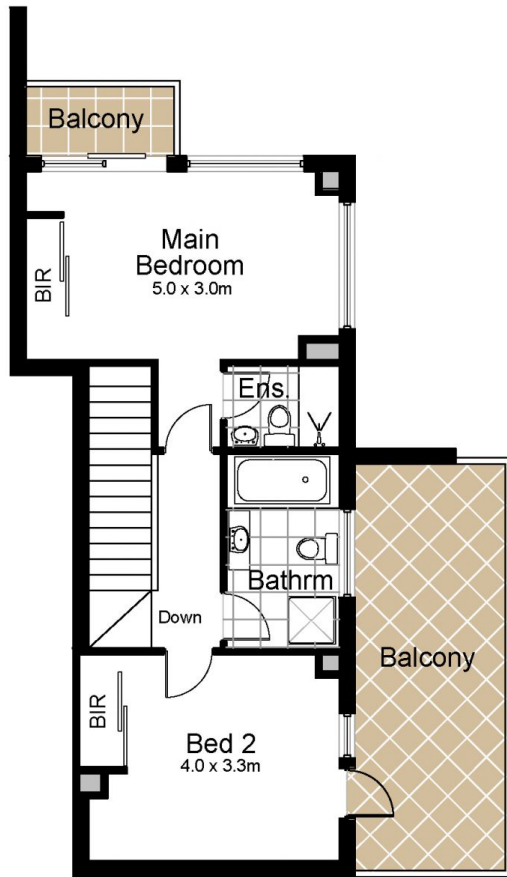
This dual level, rooftop apartment in the sky has multiple balconies and a huge terrace area, ideal for enjoying the fresh air and sunshine or perfect to entertain all the family and friends.

Offering easy single level living, the apartment has an intelligent design with a bedroom on the lower level as well as having the main bedroom with ensuite and second bedroom with its own large balcony located on the upper level. This flexible layout is great for in-law accommodation if required, or younger families looking for a low maintenance lifestyle, yet still looking to enjoy their own space and a luxurious sense of style.

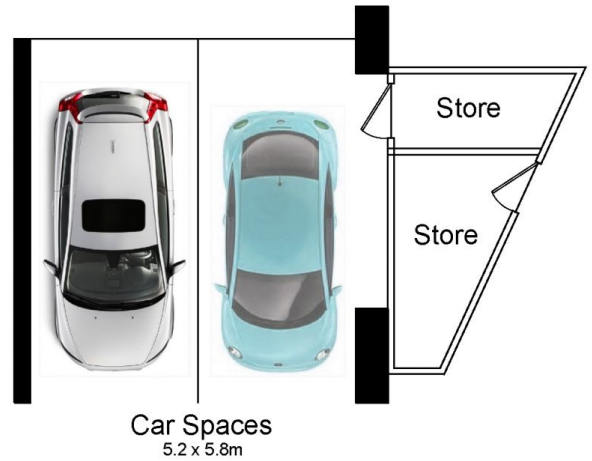
**Price** : \$ 1,190,000  
**Building Size** : 216 sqm  
**View** : <https://www.paynepacific.com.au/sale/nsw/sutherland/caringbah/residential/apartment/5874645>



**Christian Payne**  
9544 0000



Upper Level



Basement Parking



**192/360 Kingsway, CARINGBAH**

DISCLAIMER: All care has been taken in preparing this floor plan, however the accuracy is not guaranteed and no liability will be accepted for any reliance placed upon it.  
Produced by SYDNEY MEDIA PROJECTS mob: 0414 697 215 email: sydneymediaprojects@gmail.com