



162 Princes Highway Beverley Park NSW

3 1 1

Located on the corner of tree-lined Stubbs Street, this home offers convenience and a great opportunity to buy into highly sought after Beverley Park. Move straight in to this brick veneer home with a great floor plan.

Plenty of off-street parking in addition to the single lock up garage.

Sunny North aspect to private yard.

Stylishly renovated kitchen with abundant bench and cupboard space.

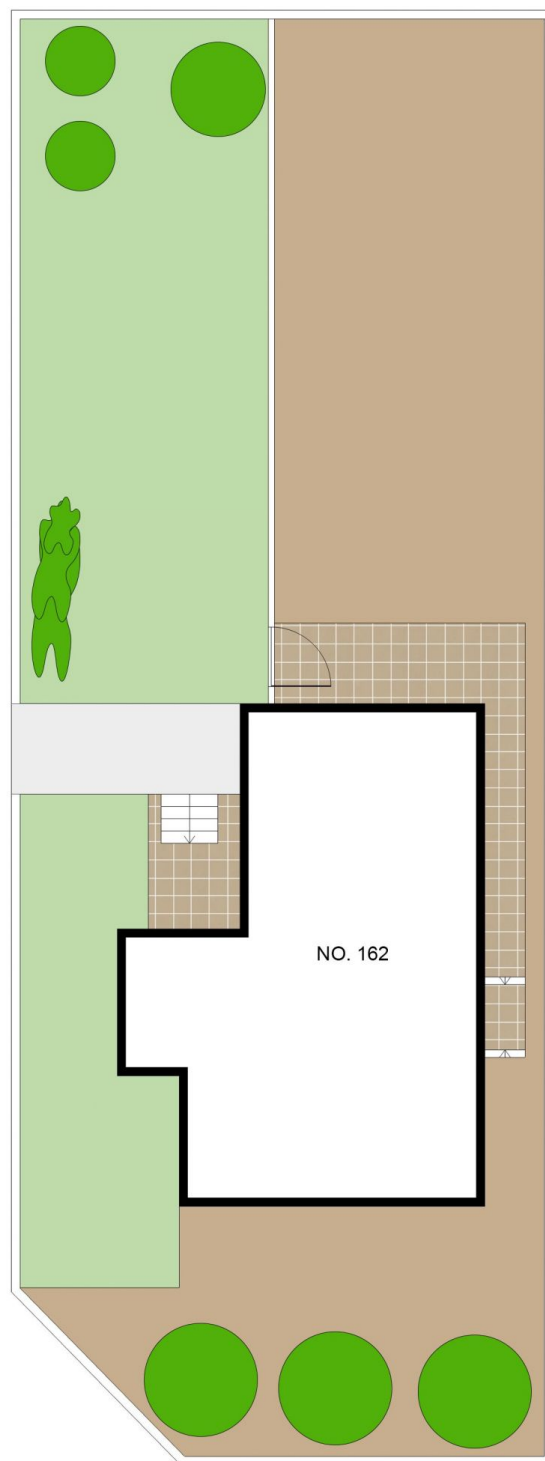
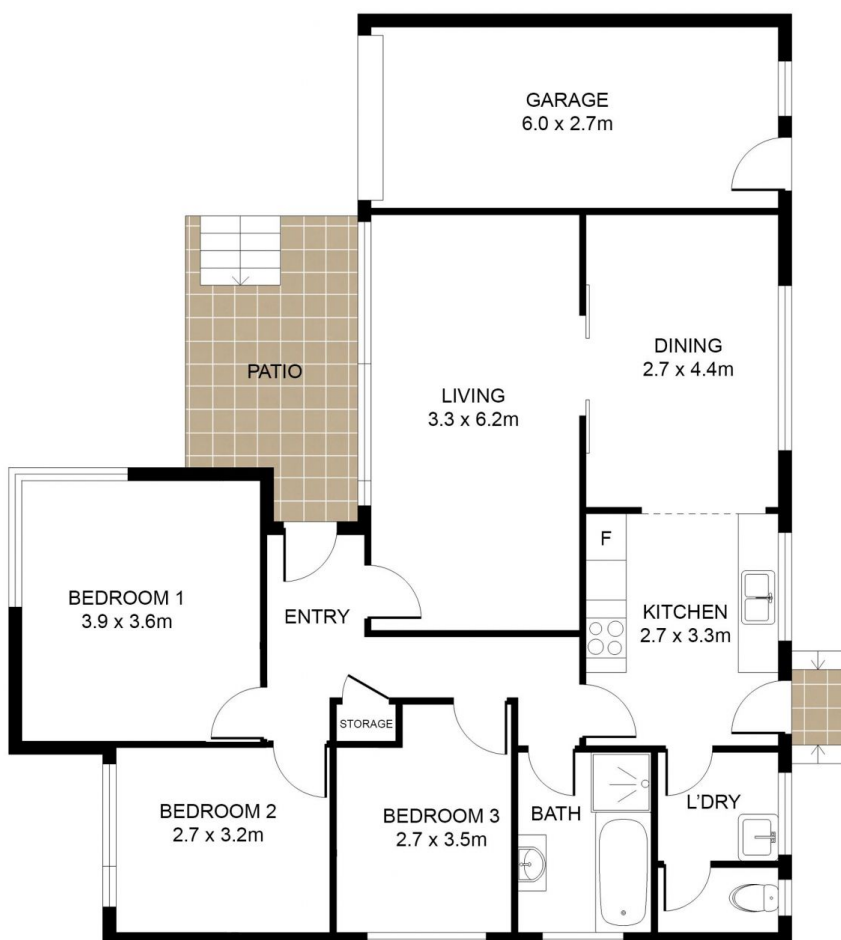
Original bathroom with separate toilet and internal laundry.

Scope for further renovation or new build (STCA).

Price : \$ 920,000
Land Size : 531.1 sqm
View : <https://www.paynepacific.com.au/sale/nsw/st-george/beverley-park/residential/house/5874634>



Suzanne Boylan
9544 0000



Stubbs St

162 Princes Hwy, BEVERLEY PARK

DISCLAIMER: All care has been taken in preparing this floor plan, however the accuracy is not guaranteed and no liability will be accepted for any reliance placed upon it
Produced by Sydney Media Projects, email: info@sydneymediaprojects.com.au