



16/116-120 Elouera Road Cronulla NSW

2 1 1

Positioned in the heart of North Cronulla, this elevated two bedroom apartment has a great layout and lots of natural light.

Featuring dual balconies, great for enjoying the morning and afternoon sun.

Secure lock up garage with additional storage space.

With the best aspect in the block the apartment is a blank canvas, ready for renovation to add your own personal touch.

A perfect opportunity to move in to enjoy Cronulla's beach side lifestyle or keep as an investment, currently being leased for \$520 per week.

Price : \$ 881,000
Building Size : 102 sqm
View : <https://www.paynepacific.com.au/sale/nsw/sutherland/cronulla/residential/apartment/5874574>

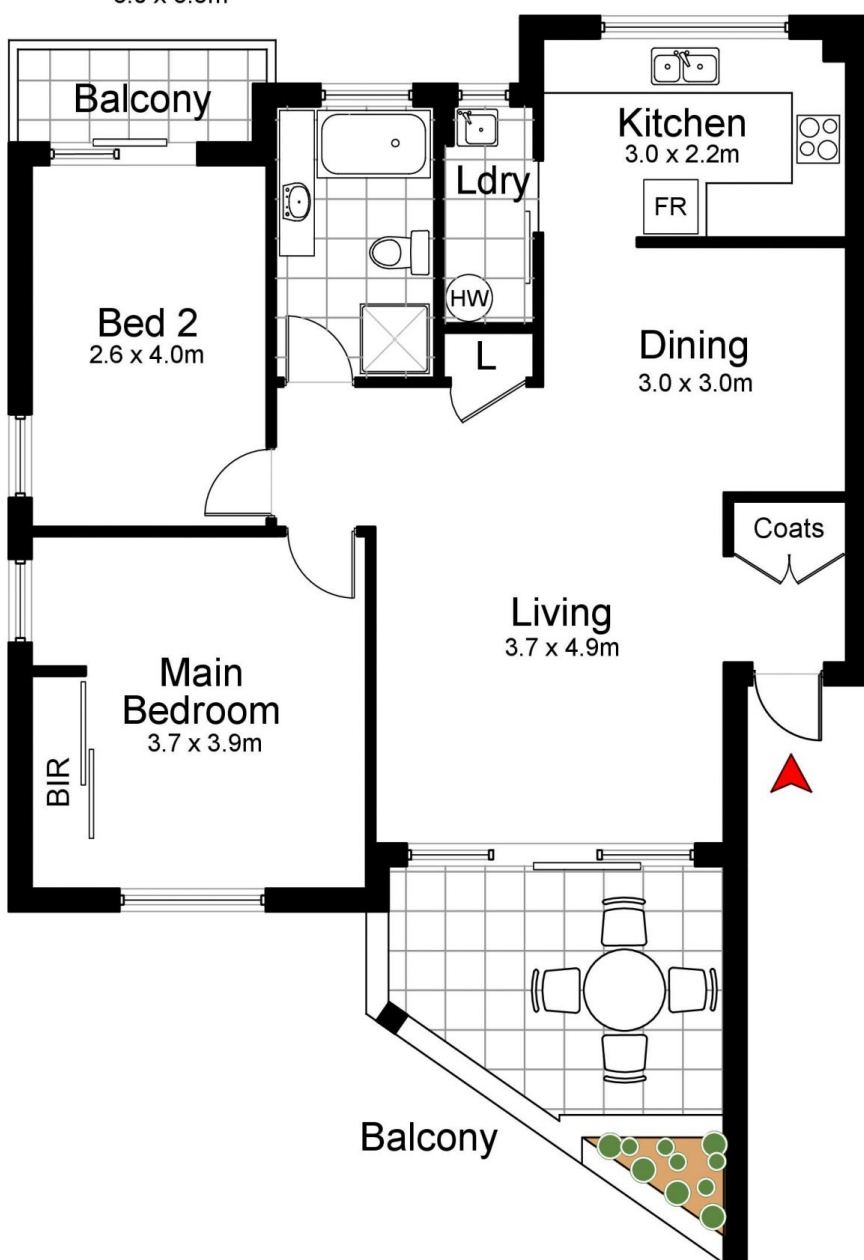


Christian Payne
9544 0000



St

Garage
3.0 x 5.5m



16/116-120 Elouera Road, CRONULLA

DISCLAIMER: All care has been taken in preparing this floor plan, however the accuracy is not guaranteed and no liability will be accepted for any reliance placed upon it.
Produced by PRODUCT PHOTOGRAPHY STUDIO mob: 0414 697 215 email: mgphoto@people.net.au