



18/31-33 Gerrale Street Cronulla NSW

2  1  1 

This two bedroom apartment in the Belgrave building has a bright and sunny easterly aspect from the kitchen and living areas.

Featuring two balconies, one facing east with ocean glimpses and the other facing west off the main bedroom.

Ready to update or renovate to capitalise on the great position within the block.

The apartment has a stylish entrance foyer and grassy terraced common area to enjoy.

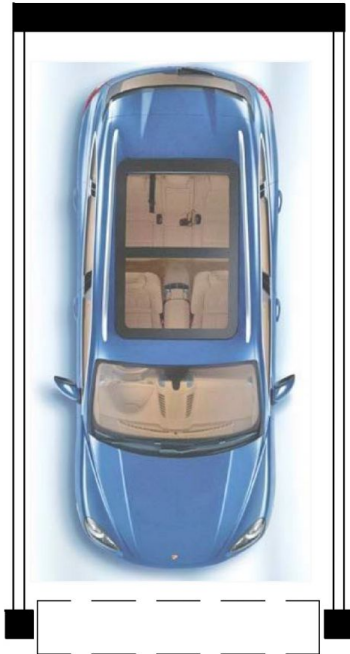
Close to everything Cronulla has to offer including restaurants, cafes, famous beaches and is a level walk to Cronulla Mall and Railway Station.

Price : \$ 955,000
Land Size : 102 sqm
View : <https://www.paynepacific.com.au/sale/nsw/sutherland/cronulla/residential/apartment/5874570>

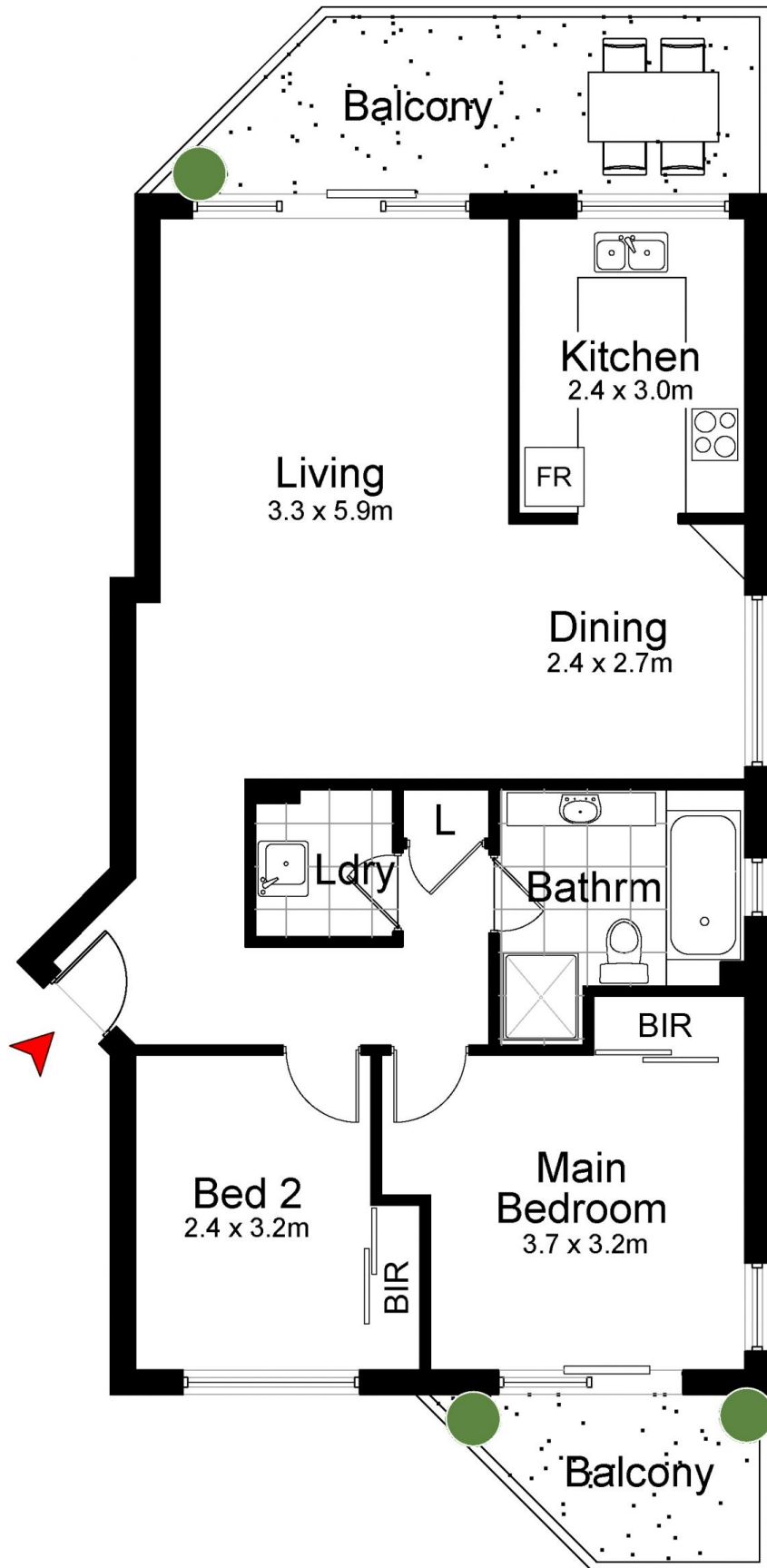


Christian Payne
9544 0000

Gerrale Street



Garage
3.0 x 5.6m



18/31-35 Gerrale Street, CRONULLA

DISCLAIMER: All care has been taken in preparing this floor plan, however the accuracy is not guaranteed and no liability will be accepted for any reliance placed upon it.
Produced by PRODUCT PHOTOGRAPHY STUDIO mob: 0414 697 215 email: mgphoto@people.net.au