



12 North East Crescent Lilli Pilli NSW

4 🏠 3 🚗 3 🚗

Form and function have not been sacrificed in this elegantly renovated home. Simplicity in design allows the bush and bay outlook to shine, enhancing the overall experience of living in such a picturesque location.

Land Size : 1062 sqm
View : <https://www.paynepacific.com.au/sale/nsw/sutherland/lilli-pilli/residential/house/5874553>

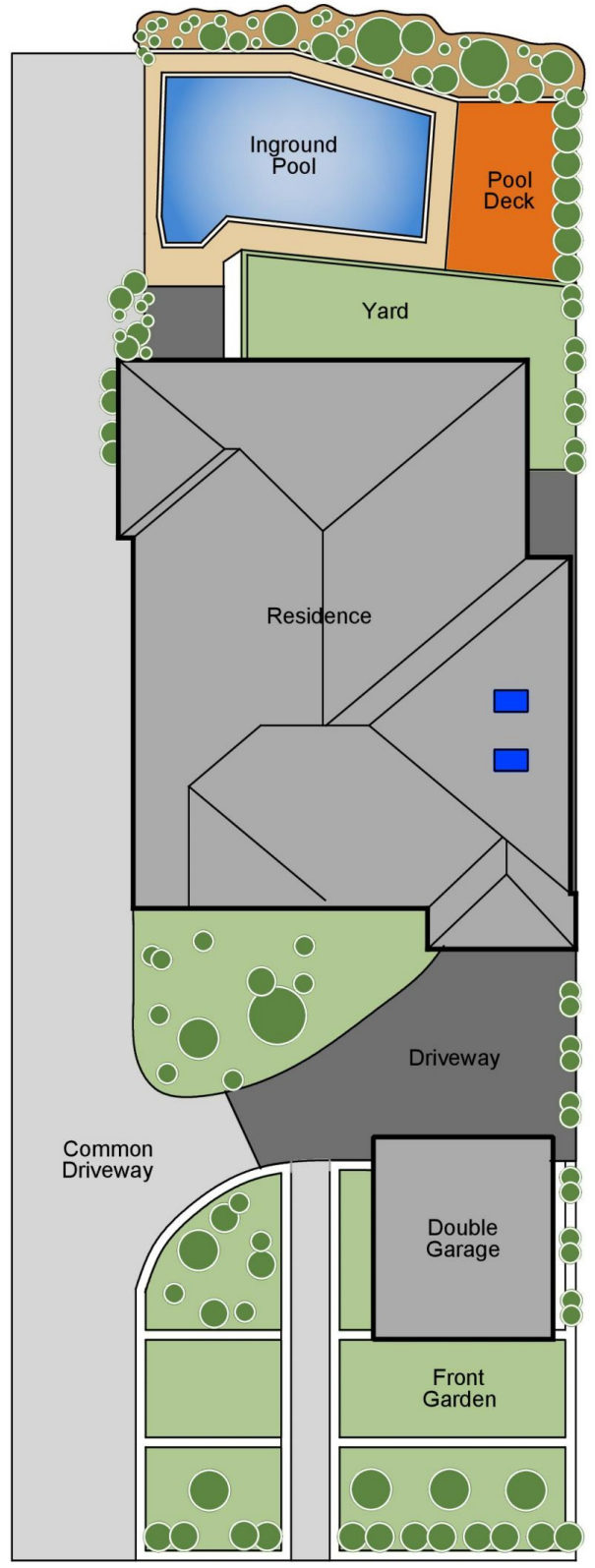
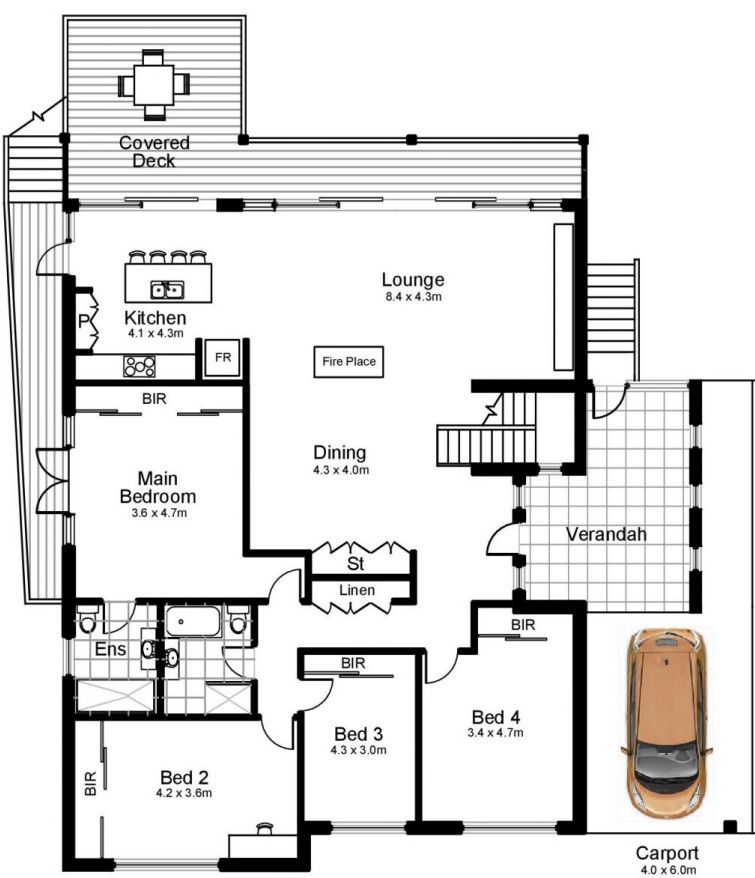
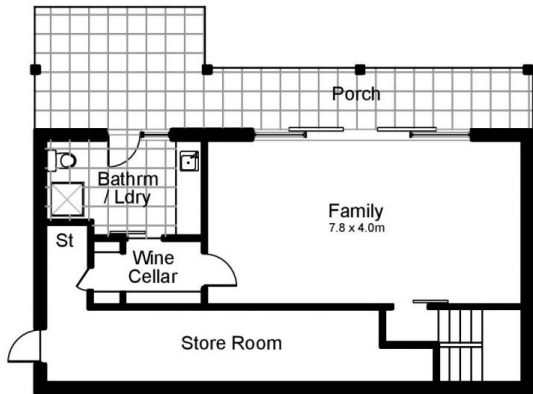
The wonderful lifestyle offered in prestigious Lilli Pilli is easily enjoyed from this well-positioned home that is within walking distance to tranquil Lilli Pilli Baths and Bush Reserve, popular Lilli Pilli Primary School, the well-serviced shopping villages and bus transport to the rail link to the City.

Superb designer renovation with attention to fine detail and storage.

Featuring natural stacked stone, timber floors, double-sided fire place, and stone kitchen bench tops with an island



Suzanne Boylan
9544 0000



12 North East Crescent, LILLI PILLI

DISCLAIMER: All care has been taken in preparing this floor plan, however the accuracy is not guaranteed and no liability will be accepted for any reliance placed upon it.
Produced by PRODUCT PHOTOGRAPHY STUDIO mob: 0414 697 215 email: mgphoto@people.net.au