






13 Edgecliff Place Engadine NSW

3  2  3 

Located in a quiet street on 853 sqm of bush front land with a huge, private and sunny west facing yard.

Perfect for the kids to play in the yard and for the adults to entertain around the BBQ area.

Inside the bush views are enjoyed from the kitchen, lounge and dining areas of the home creating a serene ambience.

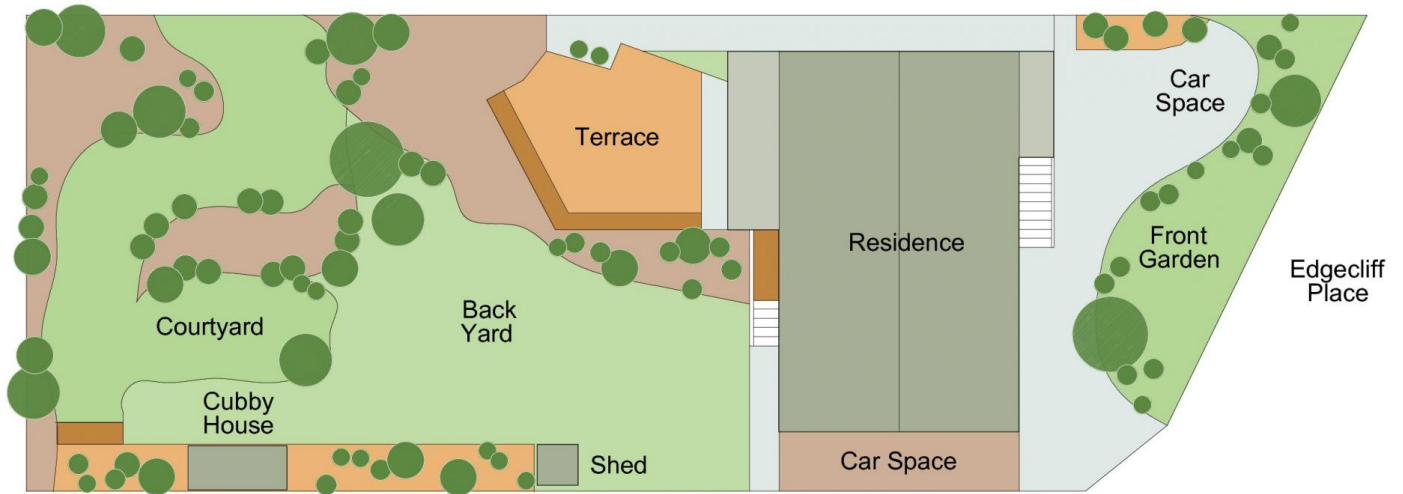
The home gets loads of natural light creating sunny nooks to enjoy year round and has a new kitchen, air conditioning and polished timber floorboards throughout.

With the bush right on your back door step the home is ideal for adventure enthusiasts into mountain biking, hiking or running.

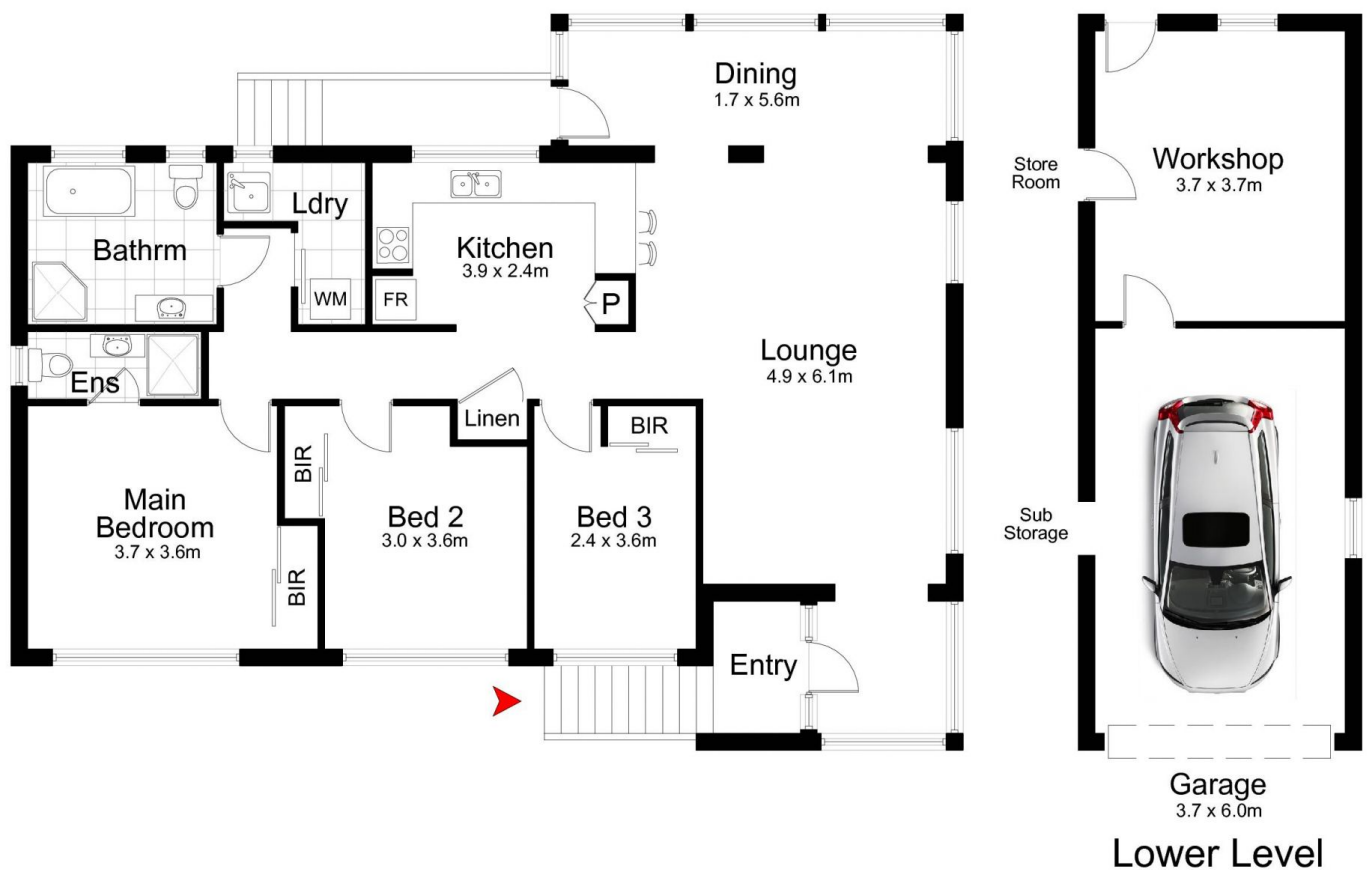
Price : \$ 890,000
Land Size : 853 sqm
View : <https://www.paynepacific.com.au/sale/nsw/sutherland/engadine/residential/house/5874511>



Christian Payne
9544 0000



Site Plan



13 Edgecliff Place, ENGADINE

DISCLAIMER: All care has been taken in preparing this floor plan, however the accuracy is not guaranteed and no liability will be accepted for any reliance placed upon it.
Produced by SYDNEY MEDIA PROJECTS mob: 0414 697 215 email: sydneymediaprojects@gmail.com