

**2/50-56 Talara Road Gymea NSW**

2 1 1

Wonderful opportunity to own a sought after elevated ground-floor apartment, located in a cul-de-sac convenient to the vibrant Gymea Shopping Village, restaurants and rail transport.

**Price** : \$ 640,500

**View** : <https://www.paynepacific.com.au/sale/nsw/sutherland/gymea/residential/apartment/5874490>

Light-filled, with a sunny aspect to the bedrooms and living areas.

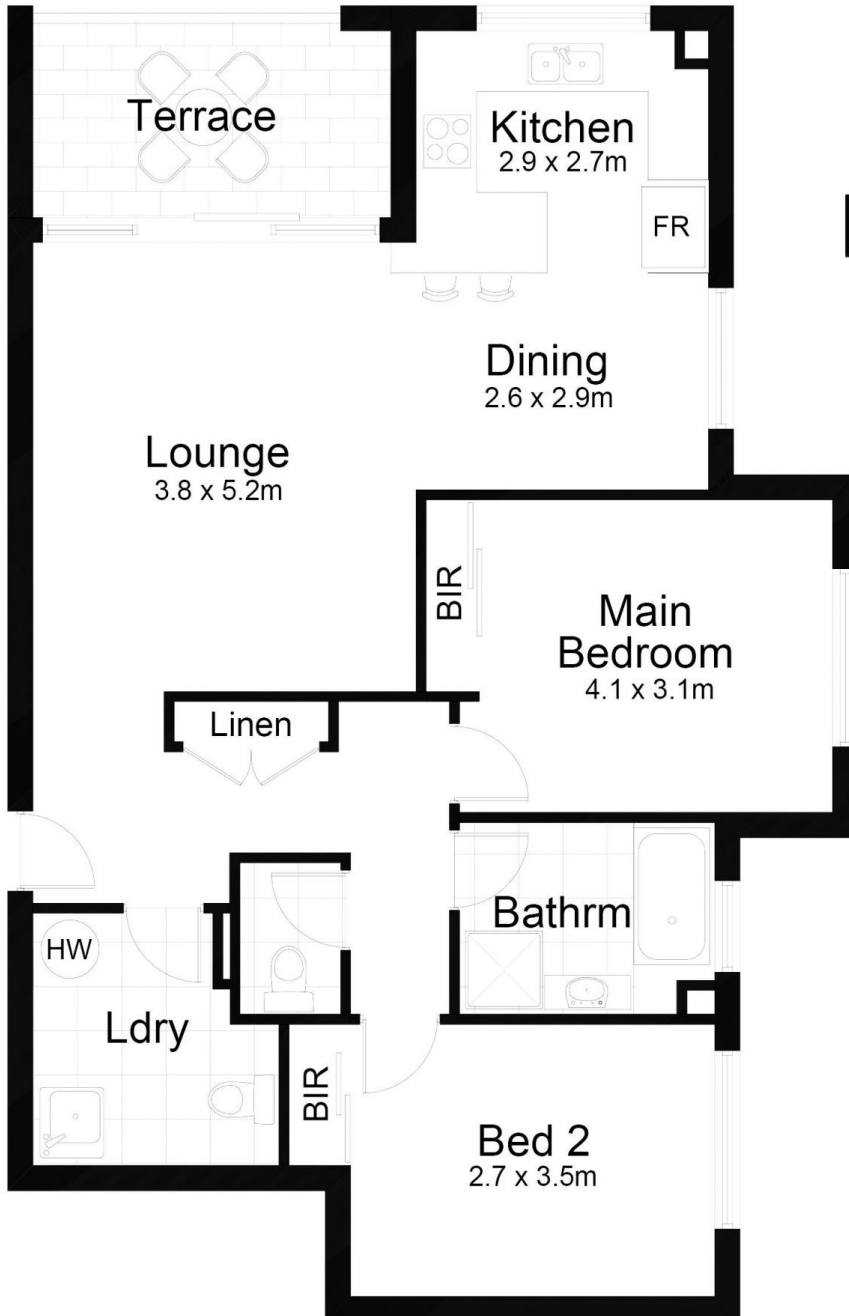
A good size balcony ideal for alfresco dining, opens off the lounge.

Two large bedrooms with big windows and built-in mirrored robes.

Large internal laundry with storage cupboards and extra w/c.



**Suzanne Boylan**  
9544 0000



**Garage**  
3.1 x 6.0m

## 2/50-56 Talara Road, GYMEA

DISCLAIMER: All care has been taken in preparing this floor plan, however the accuracy is not guaranteed and no liability will be accepted for any reliance placed upon it.  
Produced by SYDNEY MEDIA PROJECTS mob: 0414 697 215 email: sydneymediaprojects@gmail.com