



**4/222 Kingsway Caringbah NSW**

2 1 1

Combining style with a generous floorplan, this privately positioned two bedroom villa located in a small complex of six is perfect for low maintenance living and family entertaining.

**Price** : \$ 735,000

**View** : <https://www.paynepacific.com.au/sale/nsw/sutherland/caringbah/residential/villa/5874409>

Offering two spacious bedrooms both with built in wardrobes and plantation shutters with a sunny separate study.

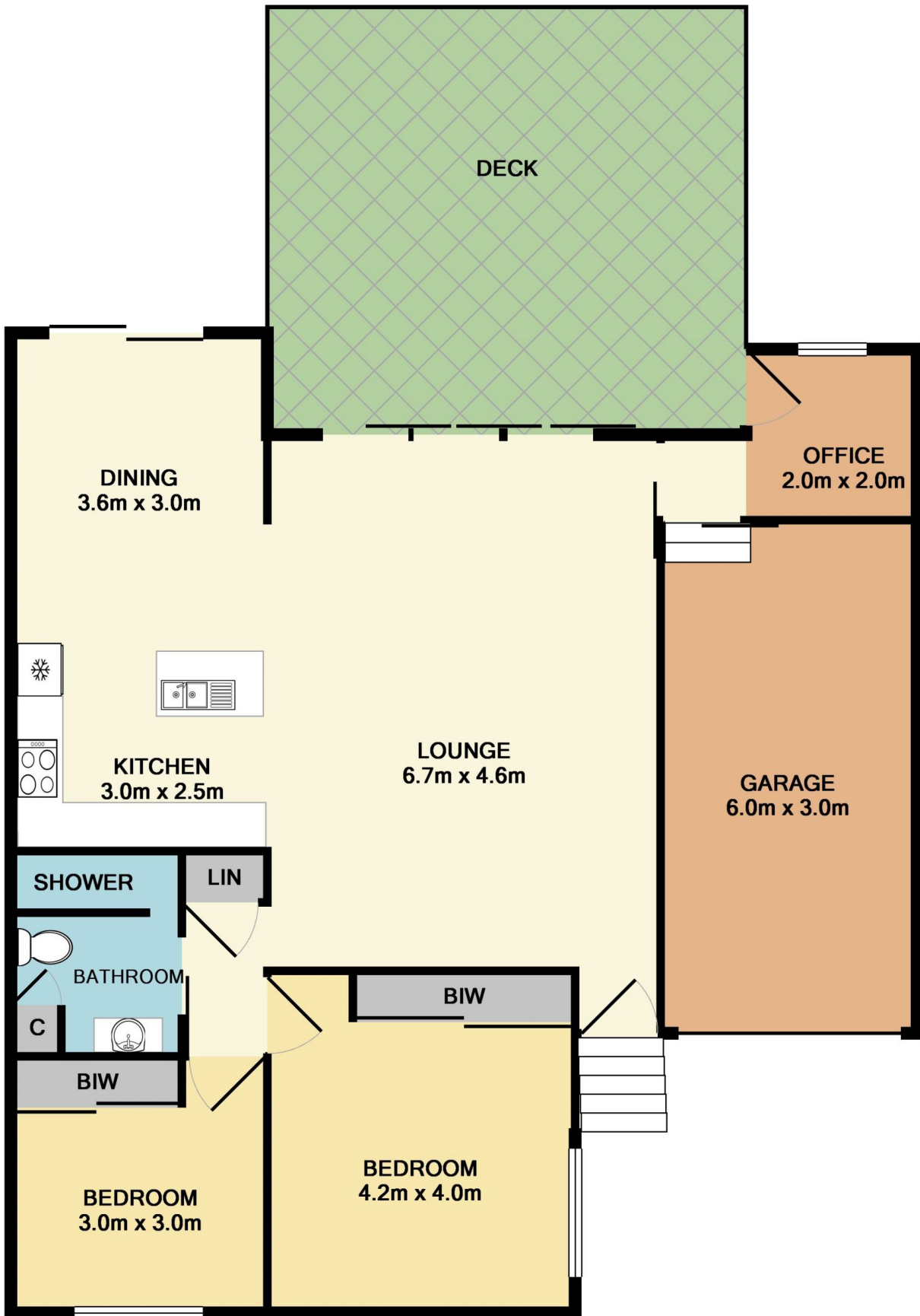
Open plan entertainer's kitchen with large stone island bench and separate dining room opens to the undercover entertainers courtyard.

Moments to local shopping village, transport and perfect for those looking for a low maintenance lifestyle.

Pet friendly complex with airconditioning and single lock up



**Christian Payne**  
9544 0000



TOTAL APPROX. FLOOR AREA 102.5 SQ.M. (1103 SQ.FT.)

Whilst every attempt has been made to ensure the accuracy of the floor plan contained here, measurements of doors, windows, rooms and any other items are approximate and no responsibility is taken for any error, omission, or mis-statement. This plan is for illustrative purposes only and should be used as such by any prospective purchaser. The services, systems and appliances shown have not been tested and no guarantee as to their operability or efficiency can be given

Made with Metropix ©2017