

**9/776-780 Kingsway Gymea NSW**

**2** **1** **1**

Blending generous proportions with the convenience and proximity to Gymea Village precinct, this two bedroom top floor apartment is perfect for investors, downsizers or young families looking for a relaxed low maintenance lifestyle.

- Offering open plan lounge with separate dining and study options, opening to north facing balcony.
- Two generous bedrooms, main with a walk in wardrobe, second with built in robe.
- Large open plan kitchen and generous laundry and large bathroom.

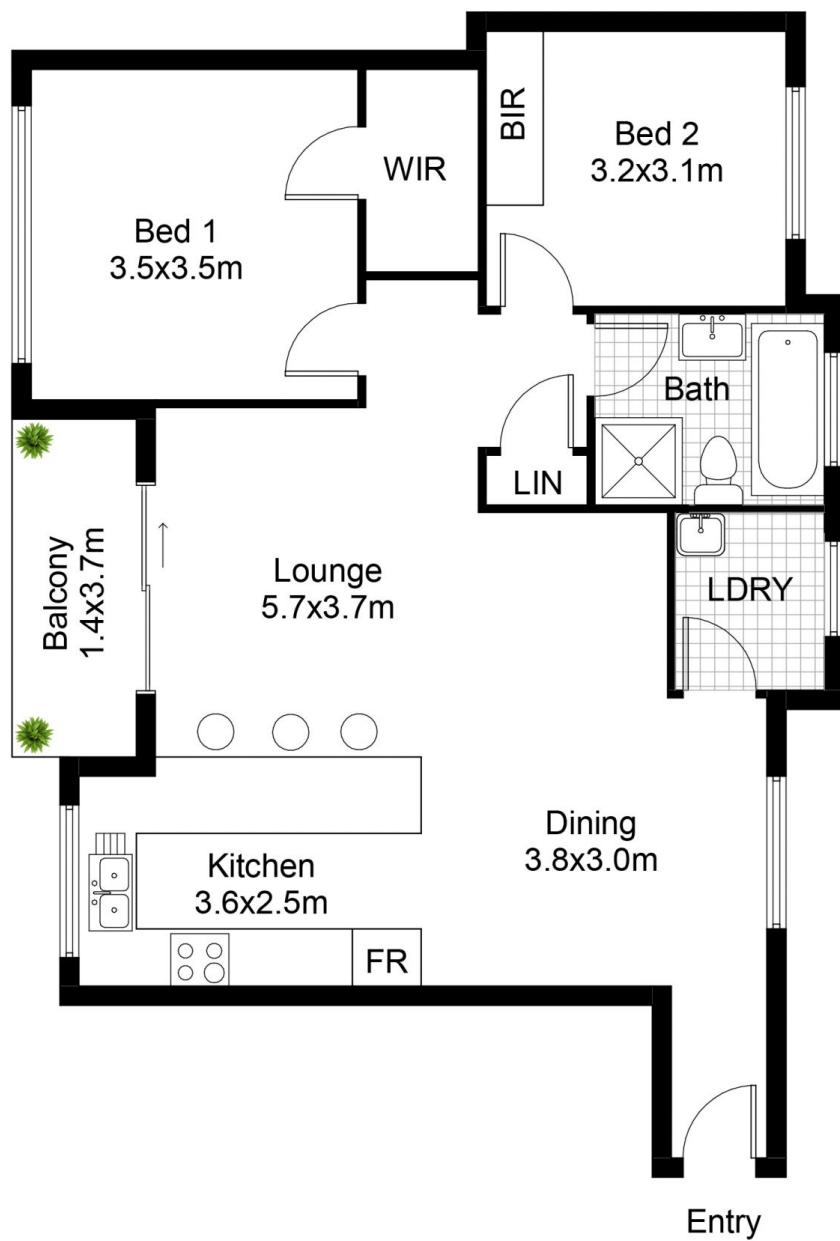
Enjoy the benefits of this perfect position, close to Hazelhurst Gallery and Arts Centre and Gymea Shopping Village, local schools and transport.

**Price** : \$ 595,000

**View** : <https://www.paynepacific.com.au/sale/nsw/sutherland/gymea/residential/apartment/5874390>



**Christian Payne**  
**9544 0000**



9/776-780 Kingsway, GYMEA

DISCLAIMER: All care has been taken in preparing this floor plan, however the accuracy is not guaranteed and no liability will be accepted for any reliance placed upon it  
Produced by PRODUCT PHOTOGRAPHY STUDIO mob: 0414 697 215 email: mgphoto@people.net.au