



### 320 The Boulevard Gymea NSW

3 2 2

This well-loved family home offers a great opportunity to buy in a convenient location in the Sutherland Shire, close to schools and sporting fields.

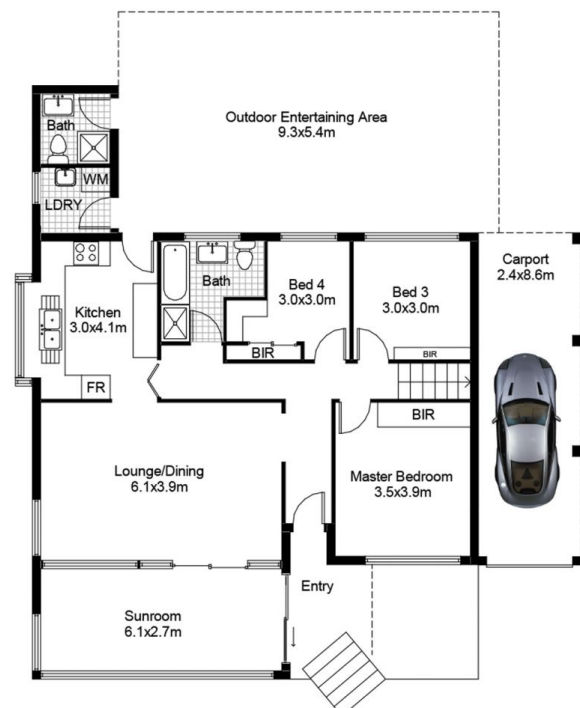
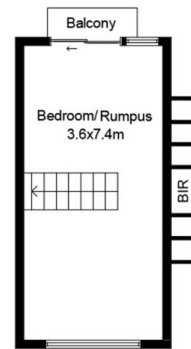
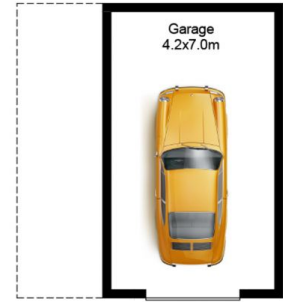
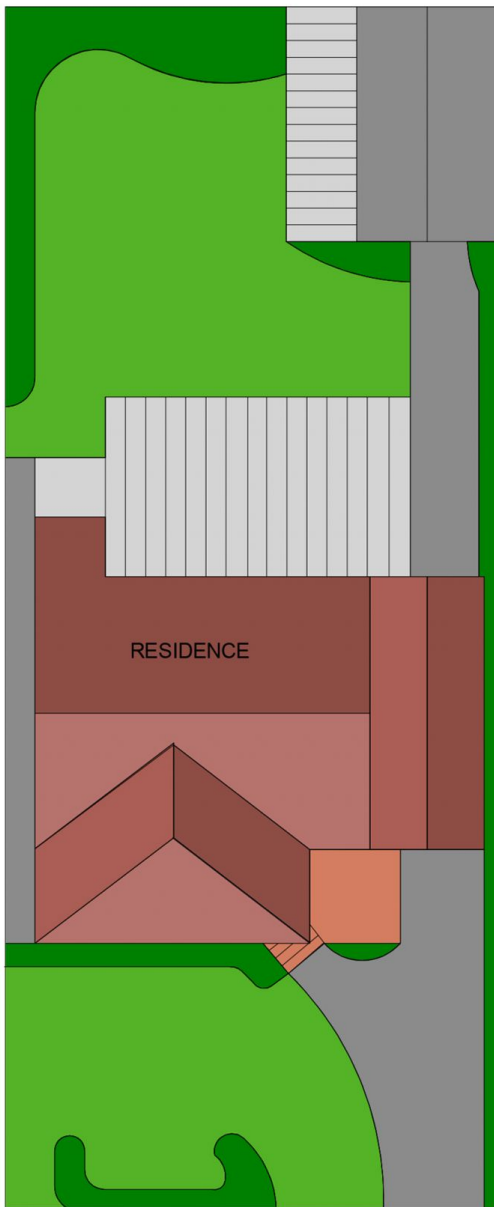
- Flexible floor plan with a large rumpus or convert to bedrooms
- Beautiful backyard offering a relaxed haven with large alfresco area
- Living area plus sunroom or home office with access to front balcony
- Land Size: 569.1sqm approx
- Land dimension 15.85 x 35.966m approx.
- Zoning: R2 - Low Density Residential

View:  
As advertised or by appointment

**Price** : \$ 840,000  
**Land Size** : 569.1 sqm  
**View** : <https://www.paynepacific.com.au/sale/nsw/sutherland/gymea/residential/house/5874364>



**Suzanne Boylan**  
**9544 0000**



## 320 The Boulevard, GYMEA

DISCLAIMER: All care has been taken in preparing this floor plan, however the accuracy is not guaranteed and no liability will be accepted for any reliance placed upon it.  
Produced by PRODUCT PHOTOGRAPHY STUDIO mob: 0414 697 215 email: mgphoto@people.net.au