



4/112 Yathong Road Caringbah South NSW

2 1 2

Blending a sophisticated peaceful style with generous living spaces this modern two bedroom villa offers the perfect opportunity to entertain family and friends and enjoy the relaxed private lifestyle.

Positioned privately at the rear of a boutique complex of 4, offering a generous versatile floor plan capturing open plan lounge and dining spaces with seamless transition to outdoor entertaining, oversized private courtyard and established landscaped gardens.

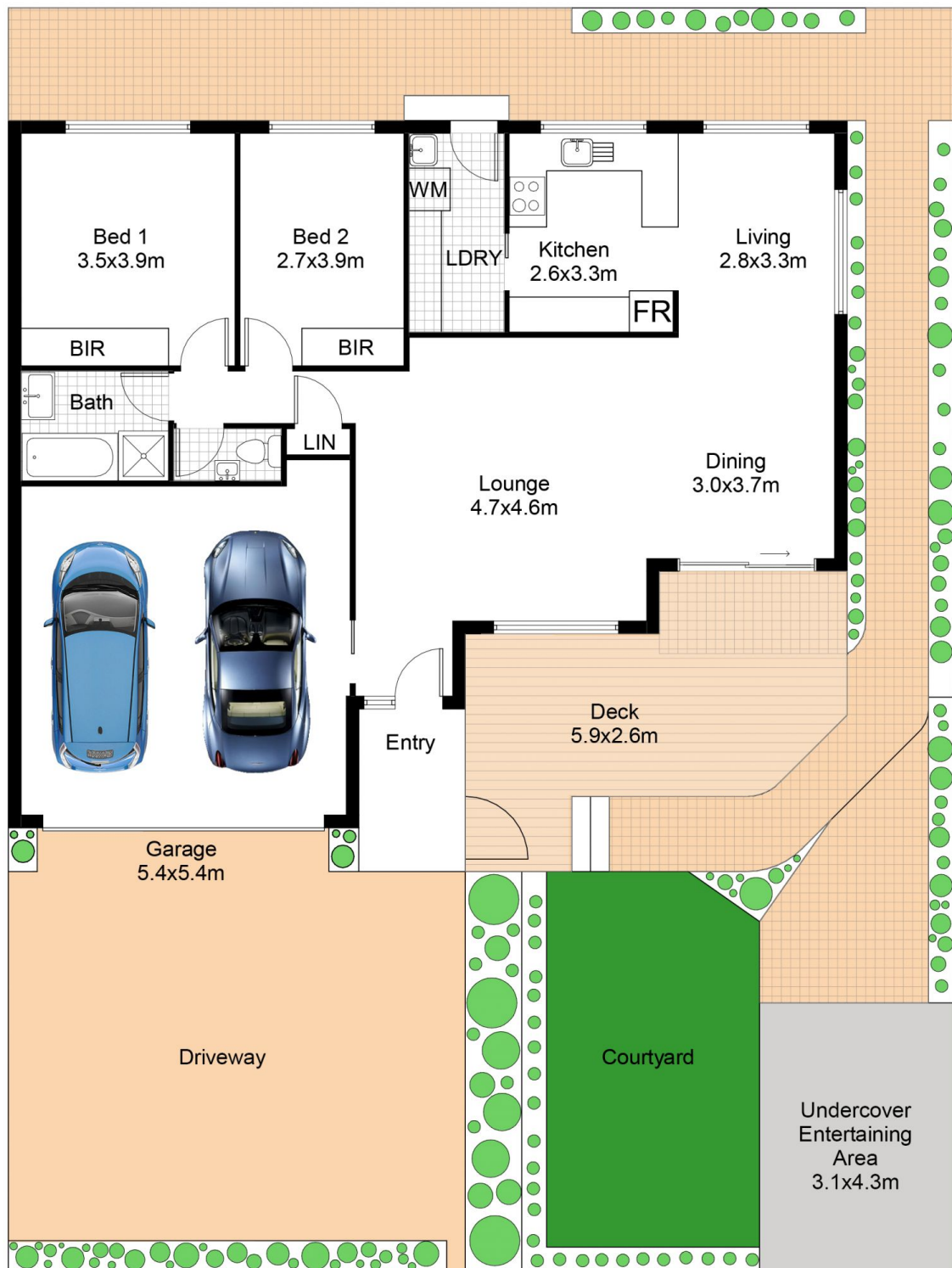
Featuring two large bedrooms, both with built in robes with northern aspects.

Modern kitchen with granite benchtops and quality appliances with separate spacious laundry.

Price : \$ 1,005,000
Land Size : 242 sqm
View : <https://www.paynepacific.com.au/sale/nsw/sutherland/caringbah-south/residential/villa/5874335>



Christian Payne
9544 0000



4/112 Yathong Rd, CARINGBAH SOUTH

DISCLAIMER: All care has been taken in preparing this floor plan, however the accuracy is not guaranteed and no liability will be accepted for any reliance placed upon it

Produced by PRODUCT PHOTOGRAPHY STUDIO mob: 0414 697 215 email: mgphoto@people.net.au