





1/475 Woolooware Road Burraneer NSW

3  **2**  **2** 

Offering sophisticated design and quality, this modern villa is perfectly positioned and ideal for downsizers looking to secure a private and premier position.

Showcasing established landscaped gardens this generous villa captures low maintenance luxury living.

Capturing a perfect northern aspect this generous villa enjoys two private courtyards perfect for relaxed family entertaining and low maintenance living.

Generous modern eat-in kitchen with stainless steel appliances and stone benchtops.

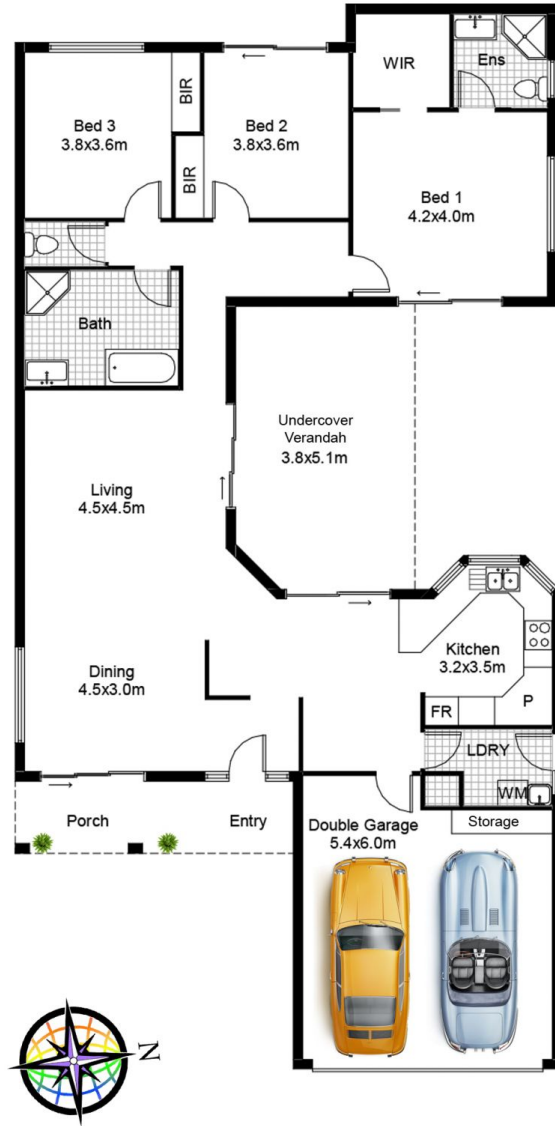
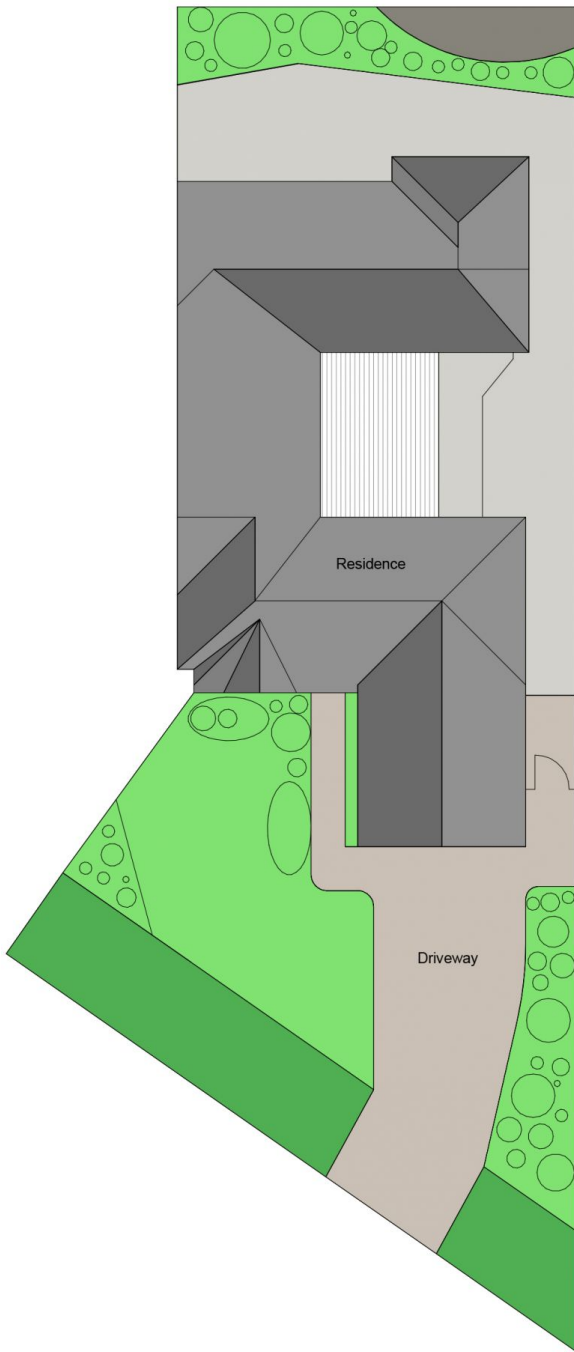
Three spacious bedrooms, main with ensuite, walk in robe and courtyard access.

Price : \$ 1,470,000

View : <https://www.paynepacific.com.au/sale/nsw/sutherland/burraneer/residential/villa/5874313>



Christian Payne
9544 0000



1/475 Woollooware Rd, BURRANEER

DISCLAIMER: All care has been taken in preparing this floor plan however the accuracy is not guaranteed and no liability will be accepted for any reliance placed upon it
 Produced by PRODUCT PHOTOGRAPHY STUDIO mob: 0414 697 215 email: mgphoto@people.net.au