



**2/48-50 Manchester Road Gymea NSW**

3 2 2

Designed to capture space and a sunny northern aspect, this three bedroom townhouse is a hidden gem, blending style and easy convenient living in a perfect location.

Offering a generous floorplan with separate lounge and dining spaces opening to an easy care north facing undercover courtyard.

Three large bedrooms all with built in wardrobes, the main with large ensuite, balcony, high vaulted ceilings and ducted air-conditioning.

Modern kitchen with granite benchtop and quality appliances. Large modern bathroom and ensuite.

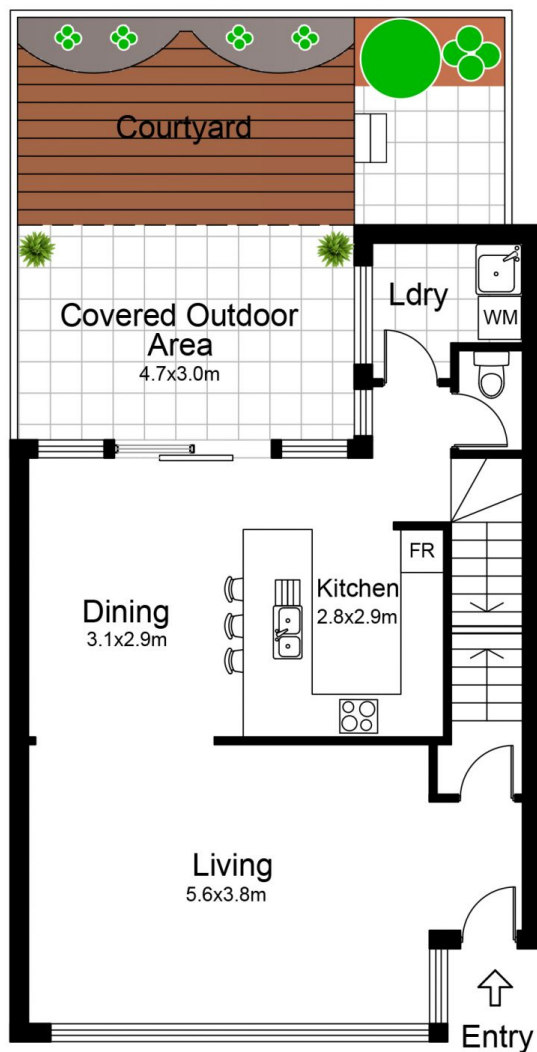
Large internal laundry with separate downstairs powder room.

**Price** : \$ 897,000

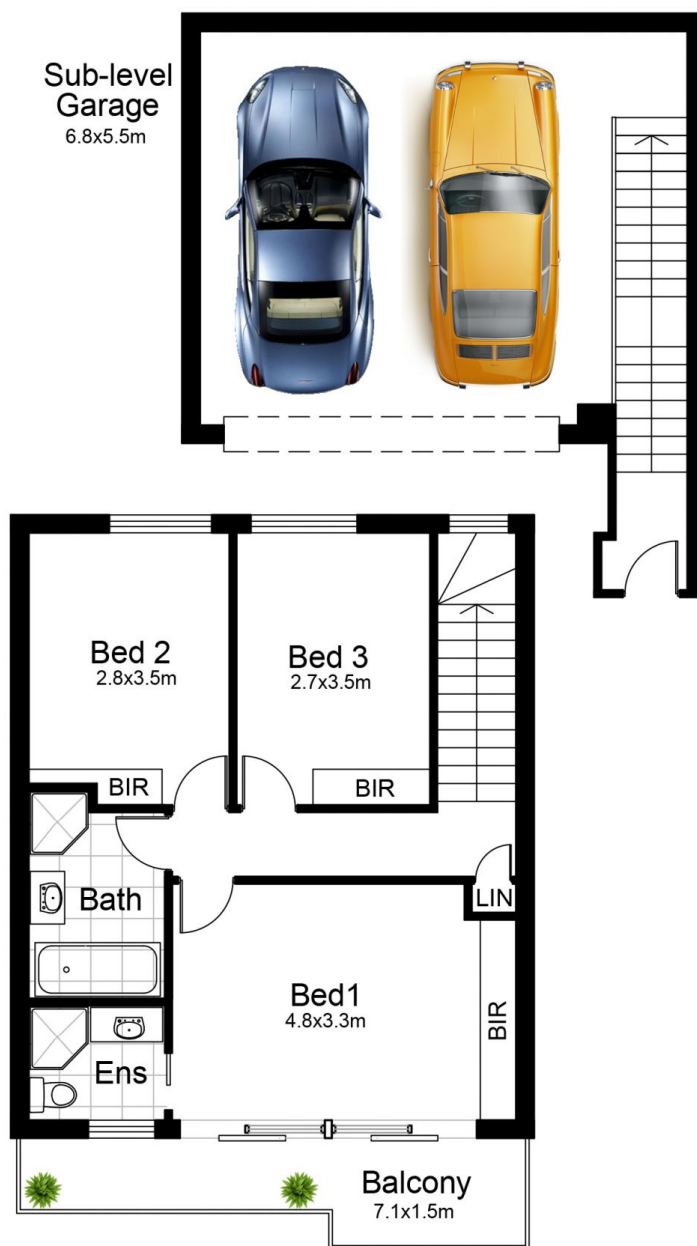
**View** : <https://www.paynepacific.com.au/sale/nsw/sutherland/gymea/residential/townhouse/5874265>



**Christian Payne**  
9544 0000



Ground Floor



First Floor



## 2/48 Manchester Rd, GYMEA

DISCLAIMER: All care has been taken in preparing this floor plan however the accuracy is not guaranteed and no liability will be accepted for any reliance placed upon it  
 Produced by PRODUCT PHOTOGRAPHY STUDIO mob: 0414 697 215 email: mgphoto@people.net.au