



34 Serpentine Road Gymea NSW

4 2 2

Peacefully positioned and embracing stunning National Park views, this generous four bedroom home with study offers a versatile floorplan and inviting family entertaining.

Offering multiple living spaces and a split level design showcasing the sweeping bush views.

Galley style kitchen with eat in space and opening to outdoor covered entertaining space.

Downstairs area has separate bathroom and rumpus/bedroom option perfect for the teenager or in-law accommodation.

Featuring a double lock up drive through garage with additional storeroom and low maintenance yard.

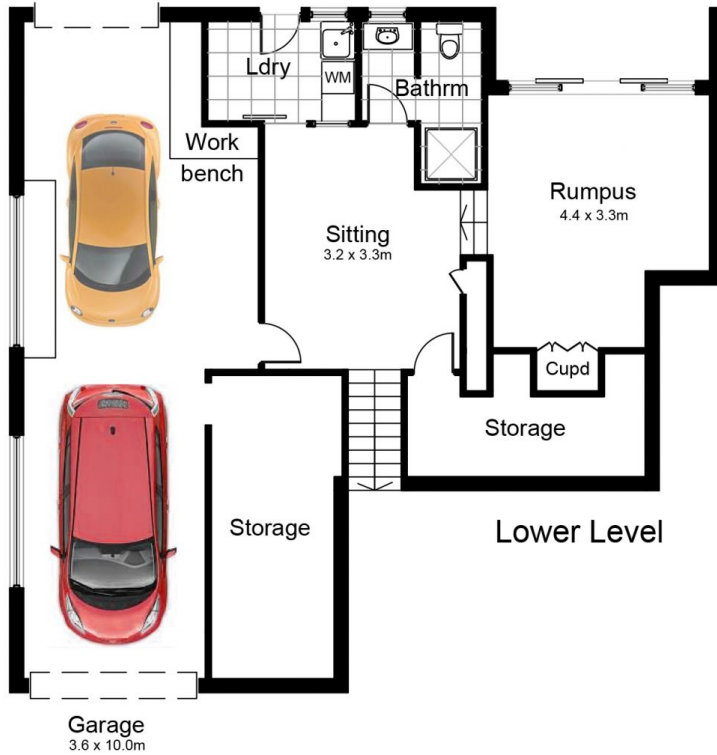
Price : \$ 1,331,000

Land Size : 581.7 sqm

View : <https://www.paynepacific.com.au/sale/nsw/sutherland/gymea/residential/house/5874241>



Christian Payne
9544 0000



34 Serpentine Road, GYMEA

DISCLAIMER: All care has been taken in preparing this floor plan however the accuracy is not guaranteed and no liability will be accepted for any reliance placed upon it
Produced by PRODUCT PHOTOGRAPHY STUDIO mob: 0414 697 215 email: mgphoto@people.net.au