



4 Winifred Avenue Caringbah NSW

5 🏠 2 🚗 2 🚗

Created for relaxed family living, blending style and space with an elegant design. Offering privacy, location and generous proportions perfect for family entertaining.

Land Size : 695.16 sqm
View : <https://www.paynepacific.com.au/sale/nsw/sutherland/caringbah/residential/house/5874234>

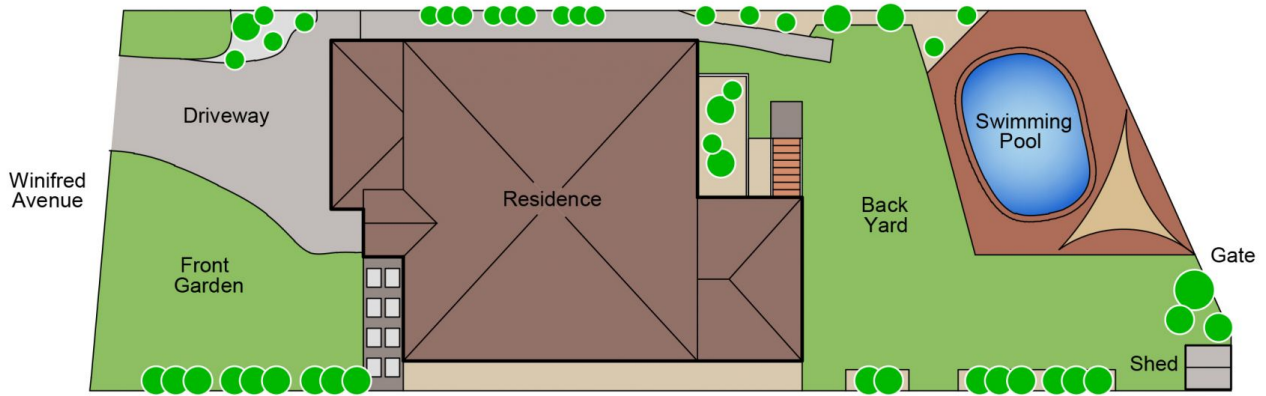
Offering five spacious bedrooms, the master suite featuring ensuite and walk in robe. All additional bedrooms feature built in robes.

Providing a versatile floorplan offering multiple living spaces, formal and informal areas, separate upstairs family living/study. Showcasing private undercover outdoor area, perfect for entertaining family and friends. This generous home provides family friendly versatility ideal for the growing or extended family.

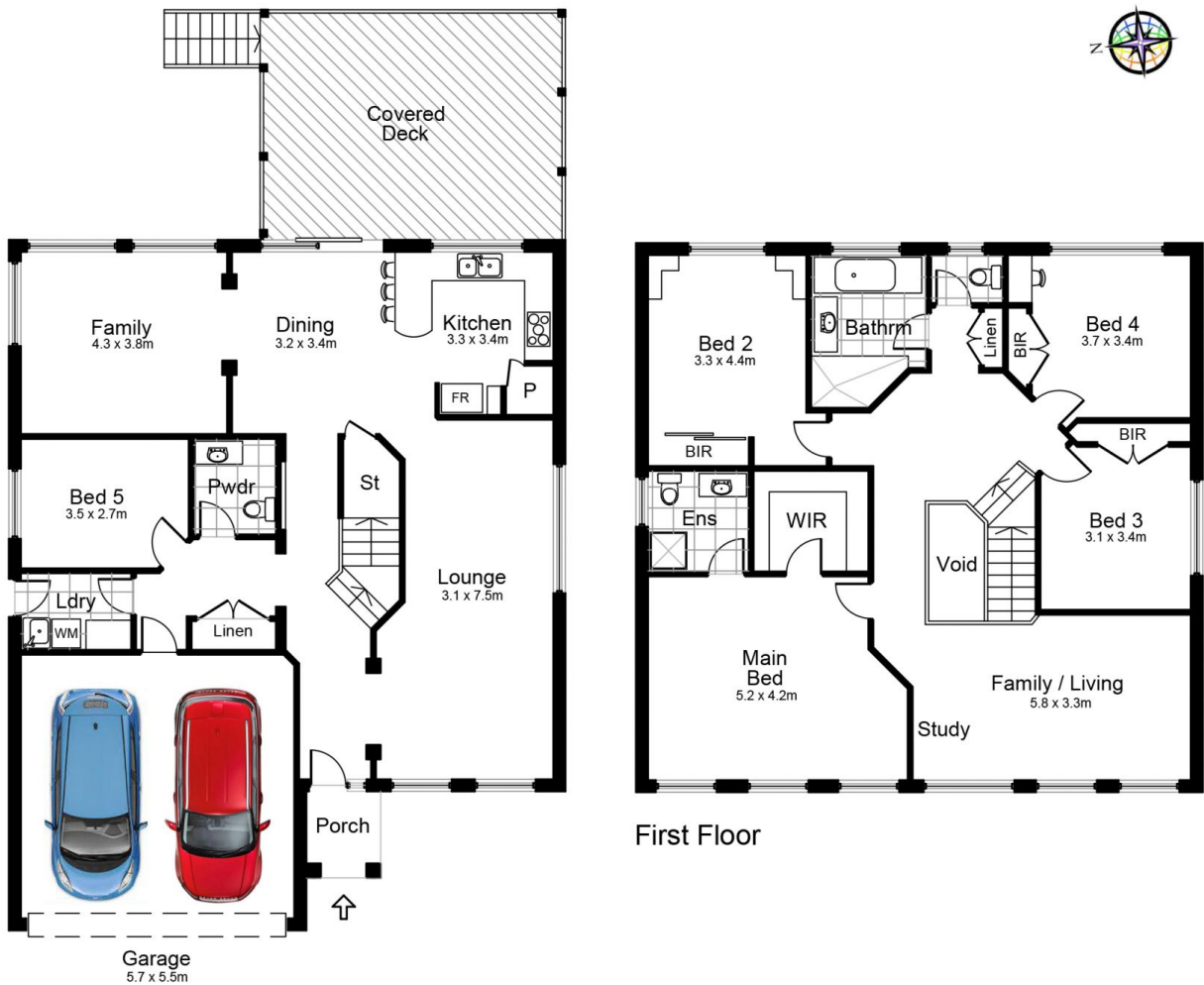


Christian Payne
9544 0000

Modern open plan gourmet kitchen with quality European appliances, opening to outside entertaining.



Site Plan



First Floor

4 Winifred Avenue, CARINGBAH

DISCLAIMER: All care has been taken in preparing this floor plan however the accuracy is not guaranteed and no liability will be accepted for any reliance placed upon it
 Produced by PRODUCT PHOTOGRAPHY STUDIO mob: 0414 697 215 email: mgphoto@people.net.au