



143 Georges River Crescent Oyster Bay NSW

4 2 2

Breathtaking panoramic views over the Georges River, this four bedroom family home is set proudly in one of the areas most highly sought after waterside locations.

Comprising four spacious bedrooms all with built in wardrobes, main with stunning river views, walk in robe and ensuite.

Showcasing beautiful hardwood flooring, and blending a versatile floor plan and architecturally designed to capture light and space.

Merging open plan living and dining with idyllic outdoor entertaining, perfect for lazy afternoons and effortless entertaining.

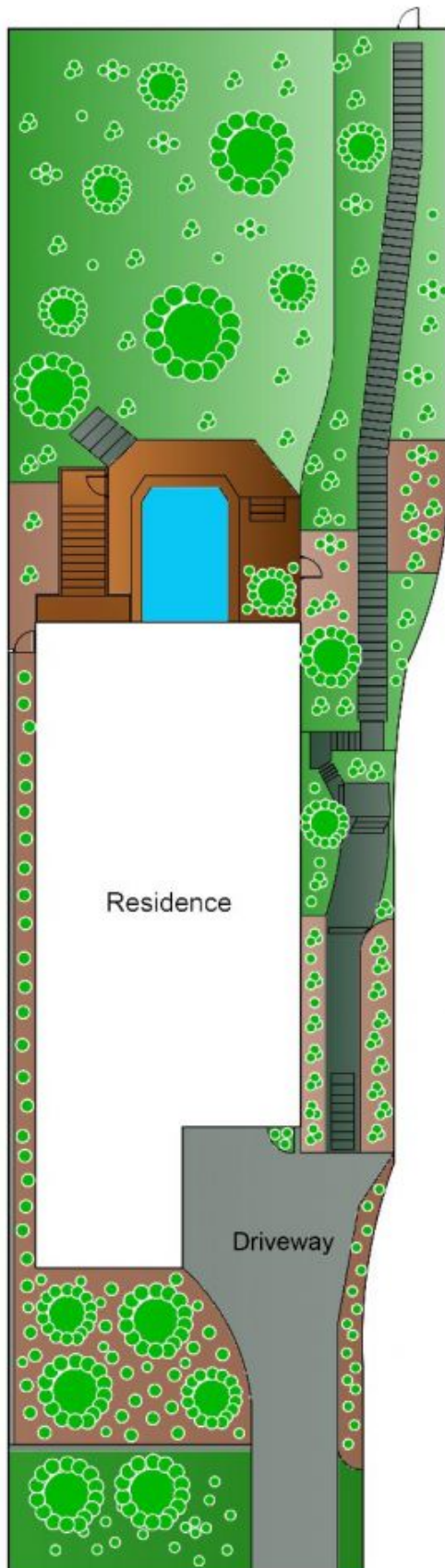
Featuring a versatile upstairs space, ideal for teenagers or

Land Size : 588.1 sqm
View : <https://www.paynepacific.com.au/sale/nsw/sutherland/oyster-bay/residential/house/5874230>

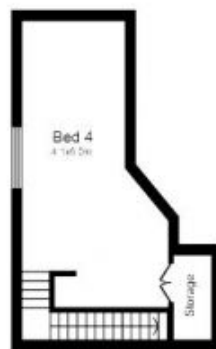


Christian Payne
9544 0000

Site Plan



Ground Floor



Second Floor



First Floor

143 Georges River Cr, OYSTER BAY

DISCLAIMER: All care has been taken in preparing this floor plan however the accuracy is not guaranteed and no liability will be accepted for any reliance placed upon it.
Produced by PRODUCT PHOTOGRAPHY STUDIO mob: 0414 897 215 email: mgphoto@people.net.au