



4 Moonah Road Alford's Point NSW

4 3 2

Positioned in one of Alford's Point most private and unique positions, blending architectural style and a desirable northern aspect, this elegant and sophisticated family home offers versatile living spaces and relaxed living, capturing spectacular uninterrupted Georges River views.

Designed to capture the commanding views over the Georges River this private waterside family home capitalises on the northern position and natural light. Generous proportions and astute design ensures every water outlook has been secured. Indulge in the peaceful living and sought after comfort and luxury.

* Large modern kitchen with granite benchtop, induction cooking and panoramic river views.

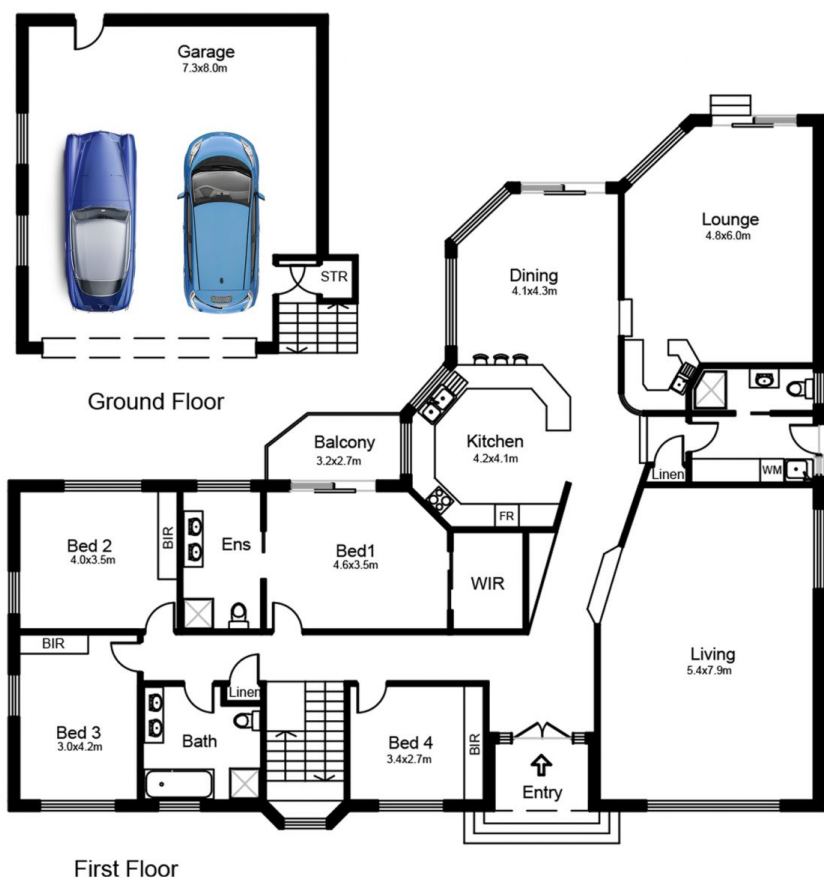
* Four spacious bedrooms, master bedroom offers walk in

Land Size : 911.1 sqm

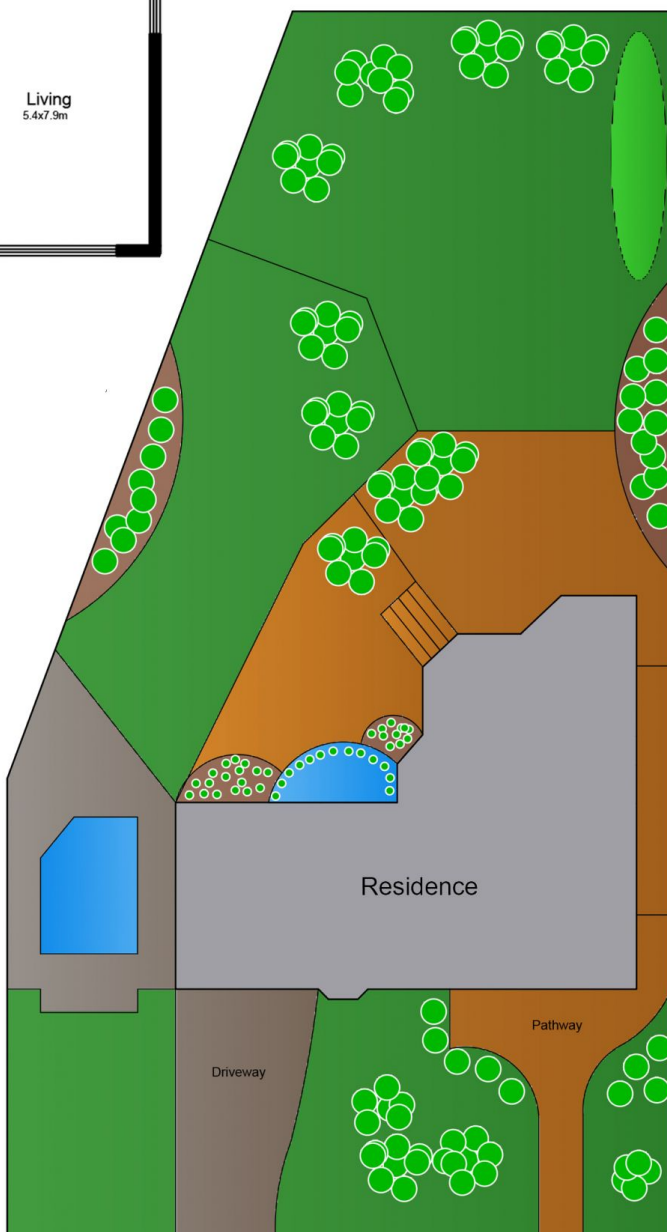
View : <https://www.paynepacific.com.au/sale/nsw/sutherland/alfords-point/residential/house/5874228>



Christian Payne
9544 0000



Site Plan



4 Moonah Rd, Alford's Point

DISCLAIMER: All care has been taken in preparing this floor plan, however the accuracy is not guaranteed and no liability will be accepted for any reliance placed upon it
Produced by PRODUCT PHOTOGRAPHY STUDIO mob: 0414 697 215 email: mgphoto@people.net.au