



6 Restormel Street Woollooware NSW

4 3 2

Architecturally designed interiors, built to the highest standards this Torrens Title home comprises luxurious finishes and relaxed family living. Enjoying superb use of space and light ideal for the growing family or downsizer looking to enjoy the convenience this easy living meticulously planned home offers.

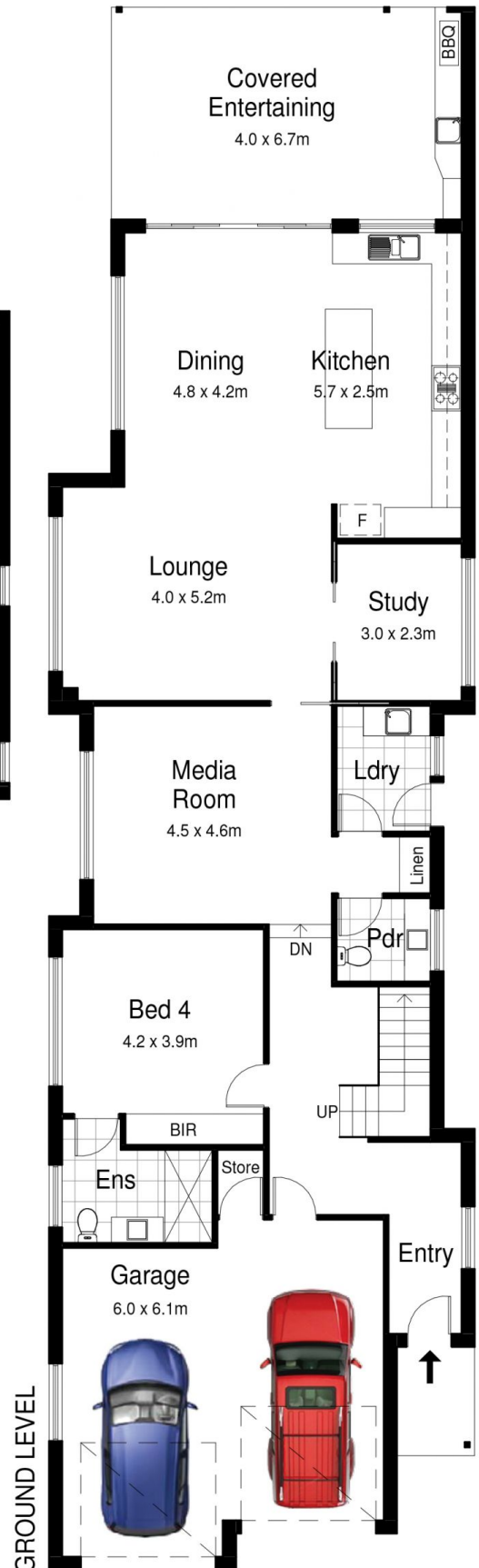
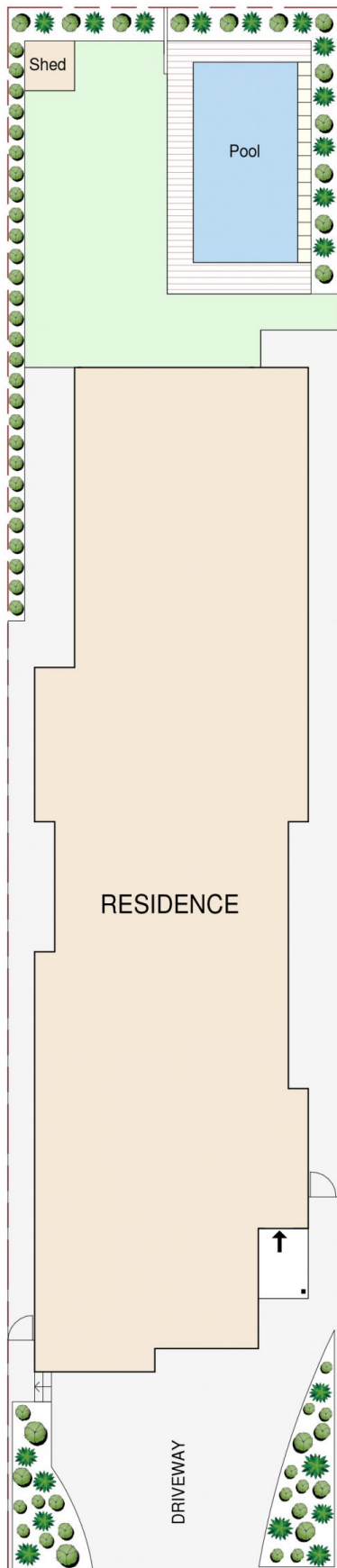
Showcasing contemporary design this impressive family home includes 4 generous bedrooms, the luxury master retreat with views over Cronulla Golf Course includes ensuite and additional walk in dressing room. A further master/guest room downstairs also features an ensuite and built in robe.

With flexible living spaces, separate living TV room, spacious lounge dining flowing to open plan luxury kitchen with stone bench top and quality Smeg gas appliances.

Price : \$ 1,995,000
Land Size : 490.4 sqm
View : <https://www.paynepacific.com.au/sale/nsw/sutherland/woollooware/residential/house/5874216>



Christian Payne
9544 0000



6 Restormel Street, WOOLLOOWARE

DISCLAIMER: All care has been taken in preparing this floorplan, however the accuracy is not guaranteed and no liability will be accepted for any reliance placed upon it
 Produced by PRODUCT PHOTOGRAPHY STUDIO mob: 0414 697 215 email: mgphoto@people.net.au