



### 31 & 32/1 Ocean Grove Cronulla NSW

Payne Pacific Estate Agents in conjunction with First National Commercial - Shire are pleased to market for lease Lots 31 and 32, 1 Ocean Grove, Cronulla.

- \* 2 retail shops to be leased as one restaurant with existing fit out.
- \* Located in busy restaurant/cafe precinct with east facing aspect and cool room.
- \* 282m2 internal and external outdoor dining area plus 4 car spaces.
- \* Great location with high volume pedestrian traffic.

Contact Payne Pacific Estate Agents and First National Commercial - Shire today for more information or to arrange an inspection!

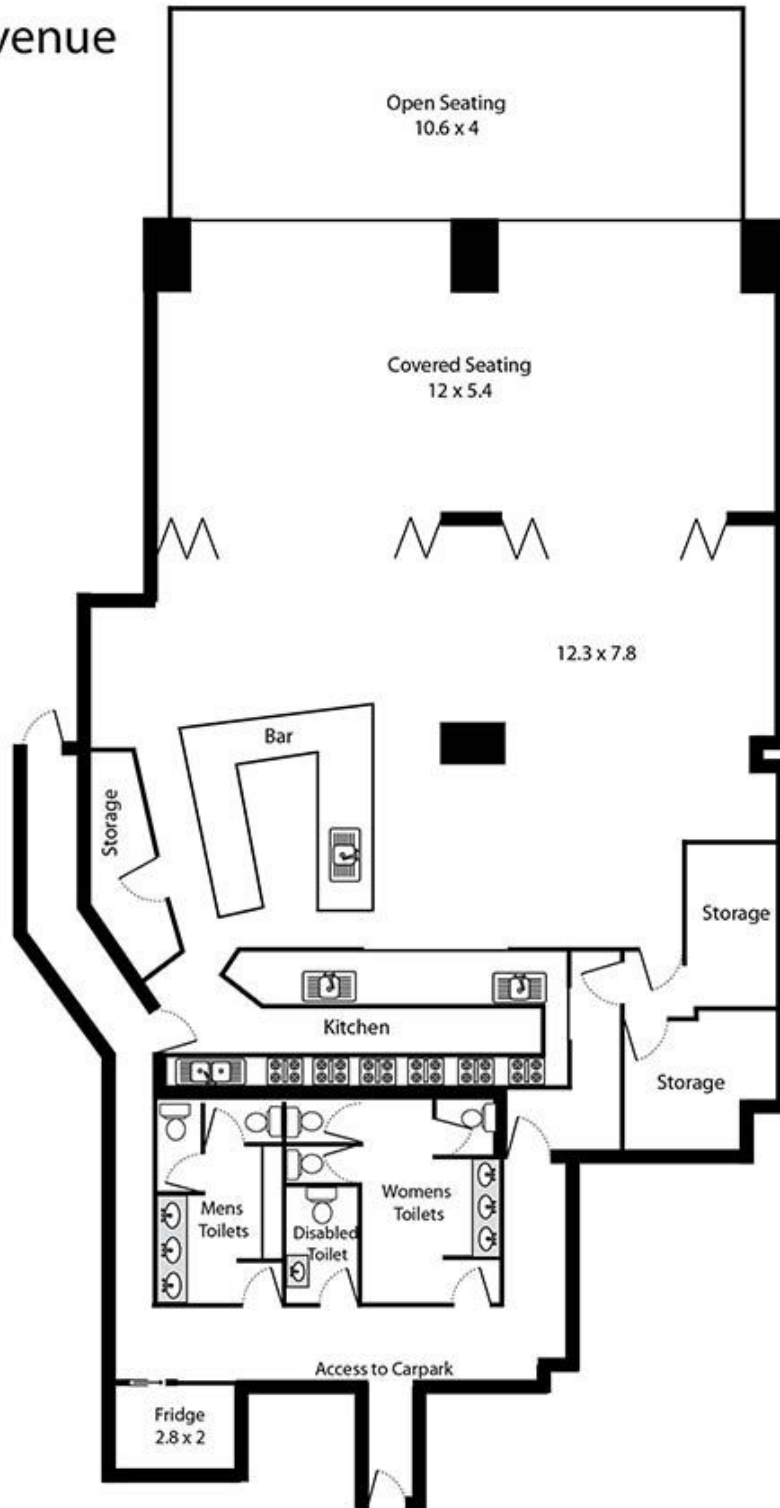
Lexene David

**Building Size** : 282 sqm  
**View** : <https://www.paynepacific.com.au/lease/nsw/sutherland/cronulla/commercial/retail/5874211>



**Lexene David**  
9544 0000

1/1 Ocean Grove Avenue



Carspace 5.5 x 3.2	Carspace 5.5 x 3.2	Carspace 5.5 x 3.2	Carspace 5.5 x 3.2
-----------------------	-----------------------	-----------------------	-----------------------

Please note: all stated dimensions are approximate only. Particulars given are or general information only and do not constitute any representation on the part of the vendor or agent.