

42/381-389 Kingsway Caringbah NSW

2 1 1

Private leafy aspect, this two bedroom apartment offers generous interiors and a convenient lifestyle.

Immaculately presented with spacious floorplan, offering generous open plan lounge and dining areas flowing to large private balcony.

Spacious open plan kitchen, large bathroom, internal laundry and generous bedrooms, main with built in robe.

Extra large lock up garage with additional storage, perfect for workshop or motorbikes.

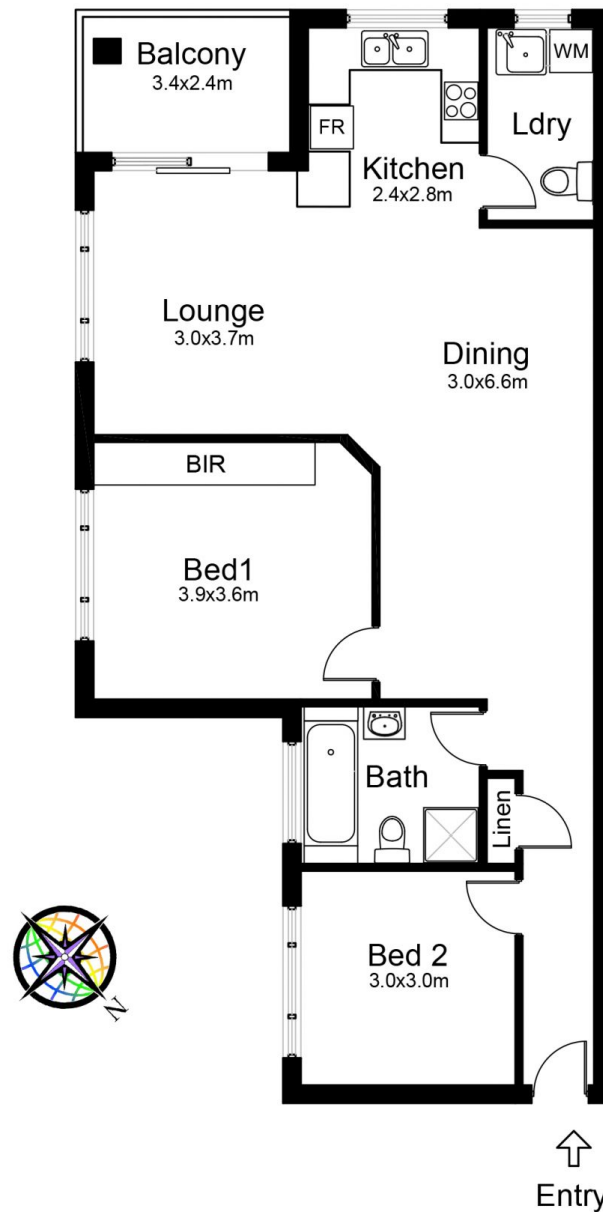
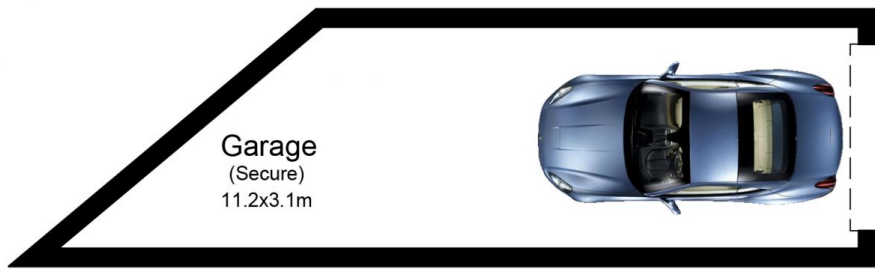
Close to Caringbah cafes, restaurants, shops, transport and excellent schooling.

Perfect property to add to your investment portfolio

Price : \$ 656,000
Building Size : 123 sqm
View : <https://www.paynepacific.com.au/sale/nsw/sutherland/caringbah/residential/apartment/5874166>



Christian Payne
9544 0000



42-381 Kingsway CARINGBAH

DISCLAIMER: All care has been taken in preparing this floor plan however the accuracy is not guaranteed and no liability will be accepted for any reliance placed upon it
Produced by PRODUCT PHOTOGRAPHY STUDIO mob: 0414 697 215 email: mgphoto@people.net.au