



2/4 Grosvenor Crescent Cronulla NSW

3 2 2

Blending elegance with a wonderfully generous floorplan, this sophisticated first floor apartment situated in a boutique bayside block offers superior finishes and privacy only moments to Gunnamatta Bay and Cronulla.

Price : \$ 1,300,000

View : <https://www.paynepacific.com.au/sale/nsw/sutherland/cronulla/residential/apartment/5874125>

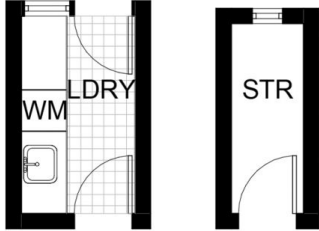
Boasting generous living and dining spaces opening to the private wrap around balcony and featuring fireplace and stunning engineered solid Bluegum flooring throughout and air conditioning, this stunning three bedroom apartment is sure to impress.

Three generous bedrooms, the main with walk-in wardrobe and spacious modern ensuite with additional storage.

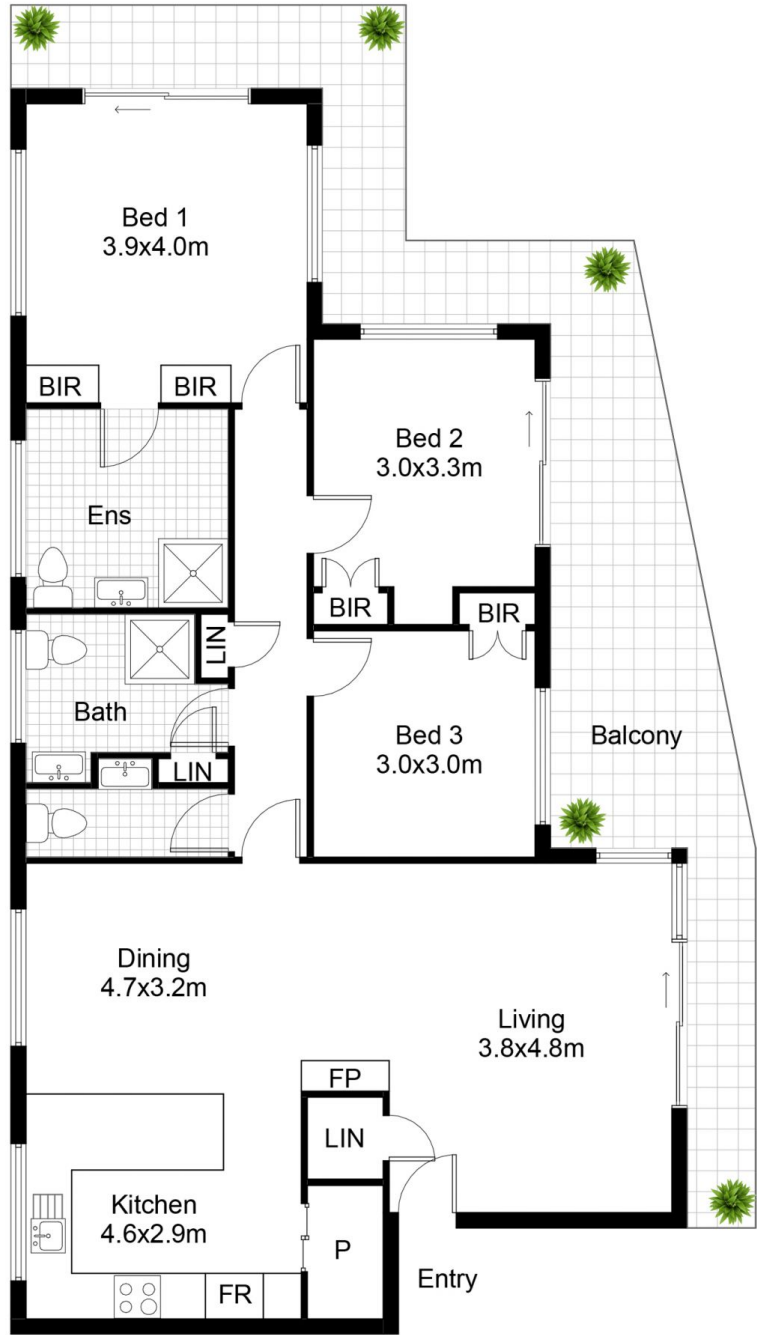
Spacious contemporary kitchen with stone bench tops, induction Neff oven and appliances and walk-in pantry.



Christian Payne
9544 0000



Garage
3.9x9.7m



2/4 Grosvenor Cr, CRONULLA

DISCLAIMER: All care has been taken in preparing this floor plan, however the accuracy is not guaranteed and no liability will be accepted for any reliance placed upon it
Produced by PRODUCT PHOTOGRAPHY STUDIO mob: 0414 697 215 email: mgphoto@people.net.au