



## 25 Irrubel Road Caringbah NSW

3 2 2

Combining a modern Mediterranean theme with a presence of style, this single level family home offers a flexible floor plan with relaxed living and entertaining.

The Mediterranean design influences showcase a welcoming family home which has been lovingly held by the same family for over 33 years. With high ceilings and crafted cabinetry throughout, this three bedroom home offers space, sophisticated style, ample storage throughout and an easy low maintenance lifestyle.

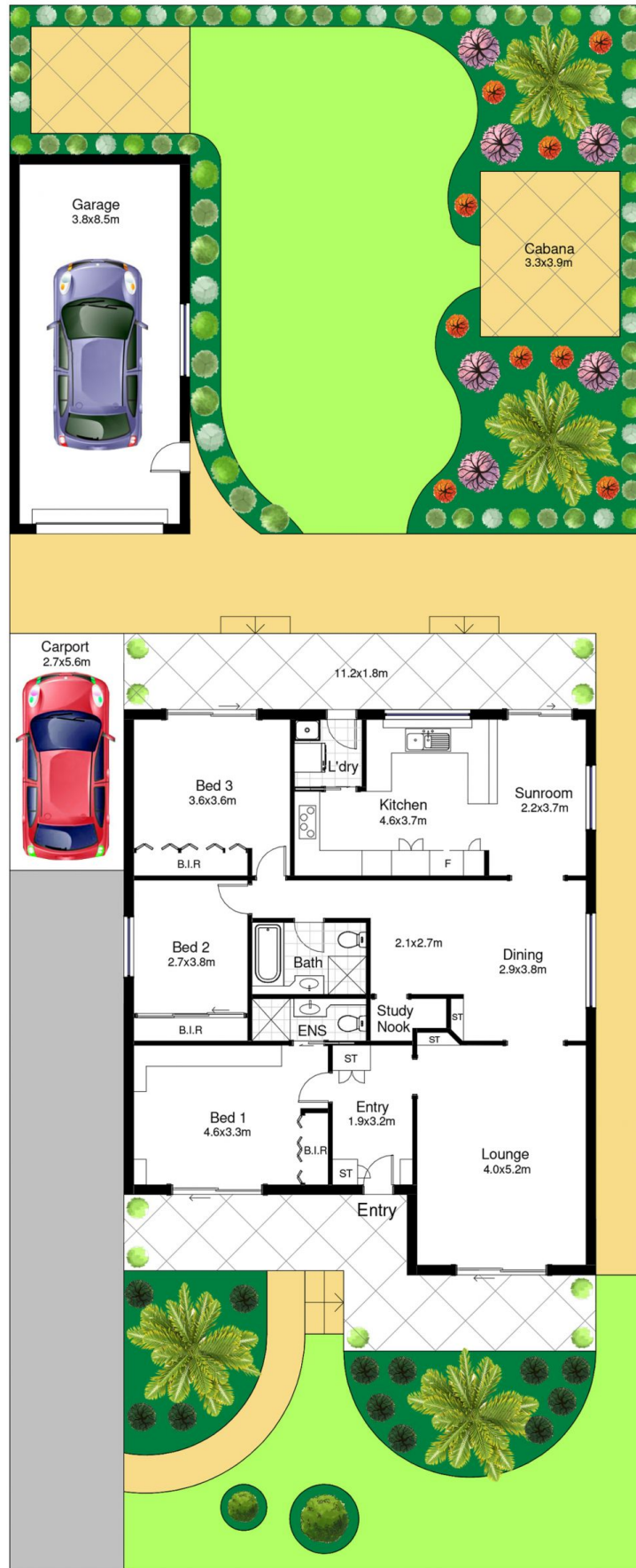
This elegant family home features three large bedrooms, main with ensuite and all with built in robes.

Generous timber kitchen with an abundance of storage, stylishly updated and perfect for family entertaining boasting a separate meals or living option and capturing

**Price** : \$ 1,280,000  
**Land Size** : 594.4 sqm  
**View** : <https://www.paynepacific.com.au/sale/nsw/sutherland/caringbah/residential/house/5874115>



**Christian Payne**  
9544 0000



## 25 Irrubel Road, Caringbah

DISCLAIMER: All care has been taken in preparing this floor plan, however the accuracy is not guaranteed and no liability will be accepted for any reliance placed upon it.  
Produced by PRODUCT PHOTOGRAPHY STUDIO mob: 0414 697 215 email: mgphoto@people.net.au