

27/13-15 Gerrale Street Cronulla NSW

2 🛏 2 🚿 1 🚗

Blending beachside living and a central Cronulla position, this spacious apartment offers convenience and relaxed Cronulla lifestyle.

- * Two bedrooms with built in robes, main with ensuite and balcony water views.
- * Extra large kitchen with stone benchtop and open plan lounge & dining spaces
- * Tastefully styled with magical east facing balcony with views to Gunnamutta Bay
- * Security apartment, internal laundry, secure car space and lock up storage room
- * Perfect for downsizers, investors or young families wanting beach side convenience.

BED 2
BATH 2

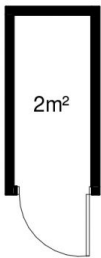
Price : \$ 910,000
Building Size : 105 sqm
View : <https://www.paynepacific.com.au/sale/nsw/sutherland/cronulla/residential/apartment/5874054>



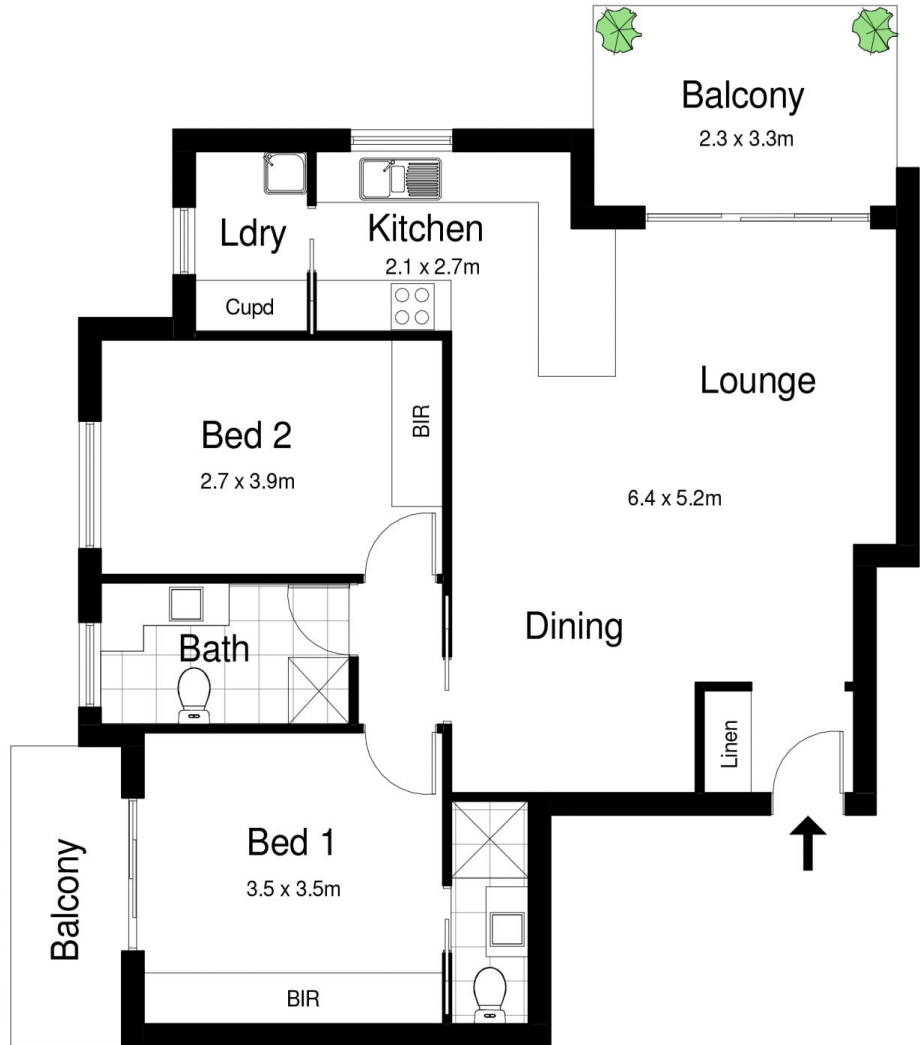
Christian Payne
9544 0000



Security Car Space



Storage Room



27/13-15 Gerrale Street, CRONULLA

DISCLAIMER: All care has been taken in preparing this floorplan, however the accuracy is not guaranteed and no liability will be accepted for any reliance placed upon it
Produced by PRODUCT PHOTOGRAPHY STUDIO mob: 0414 697 215 email: mgphoto@people.net.au