



**18A Dolans Road Woollooware NSW**

5 3 2

Privately positioned and offering generous family living, this five bedroom home captures space and possibilities.

\* Offering multiple living and dining areas, perfect for larger families looking for separate space

\* Generous size bedrooms, main with ensuite, original kitchen and bathrooms

\* Level child friendly sunny yard with inground swimming pool

\* Perfect opportunity to renovate or redevelop, capitalise and create your dream

\* Privately positioned close to transport, local shops and excellent schools

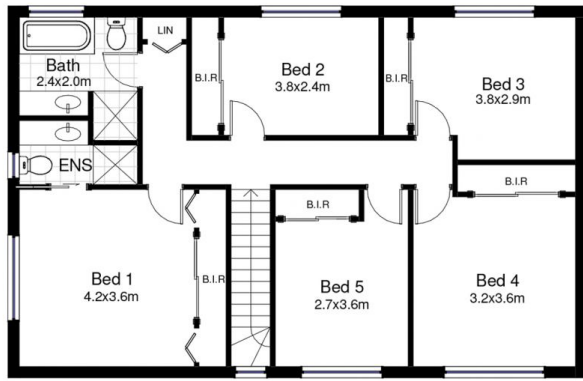
**Price** : \$ 1,360,000

**Land Size** : 789.8 sqm

**View** : <https://www.paynepacific.com.au/sale/nsw/sutherland/woollooware/residential/house/5874051>



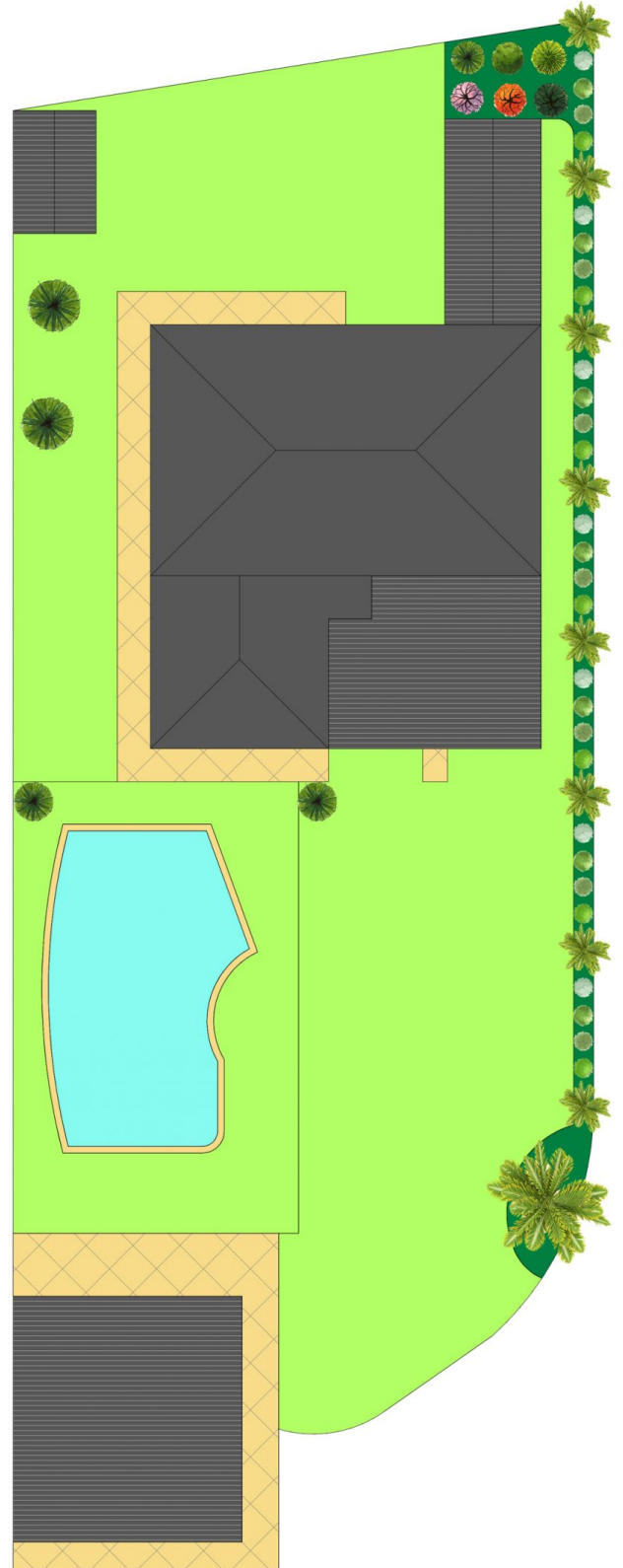
**Christian Payne**  
9544 0000



First Floor



Ground Floor



## 18A Dolans Road, Woollooware

DISCLAIMER: All care has been taken in preparing this floor plan, however the accuracy is not guaranteed and no liability will be accepted for any reliance placed upon it.  
Produced by PRODUCT PHOTOGRAPHY STUDIO mob: 0414 697 215 email: mgphoto@people.net.au