



4 Taywood Street Woollooware NSW

5 3 2

Positioned in a family friendly location, this generous home is elegantly presented and offering relaxed easy living.

Inviting and spacious, ideal for the growing family looking to embrace the convenience, space and lifestyle that North Woollooware has to offer.

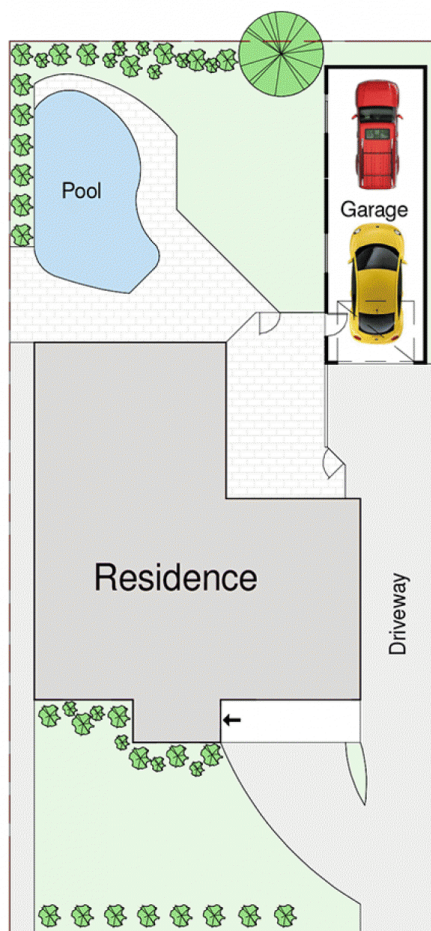
Comprising five generous bedrooms, the master with ensuite and balcony, all additional bedrooms feature built in robes. Teenage or guest private bedroom on the ground floor.

Offering multiple living areas, separate dining and large open plan kitchen. Showcasing a flexible floor plan designed for easy family living, this home is sure to impress.

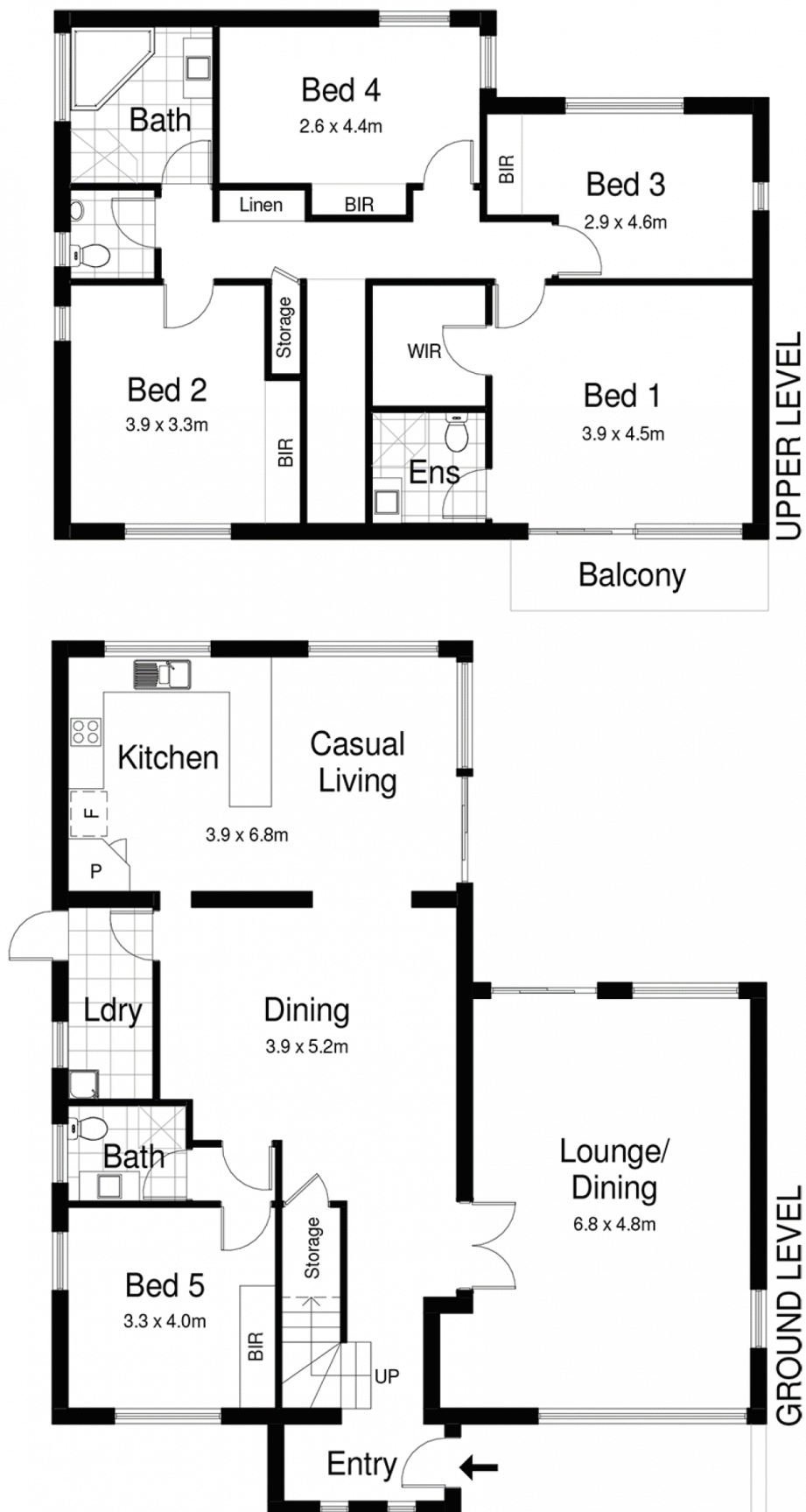
Price : \$ 1,680,000
Land Size : 588.1 sqm
View : <https://www.paynepacific.com.au/sale/nsw/sutherland/woollooware/residential/house/5874025>



Christian Payne
9544 0000



SITE PLAN



4 Taywood Street, WOOLLOOWARE

DISCLAIMER: All care has been taken in preparing this floorplan, however the accuracy is not guaranteed and no liability will be accepted for any reliance placed upon it
 Produced by PRODUCT PHOTOGRAPHY STUDIO mob: 0414 697 215 email: mgphoto@people.net.au