



52 Hume Road Cronulla NSW

3 1 2

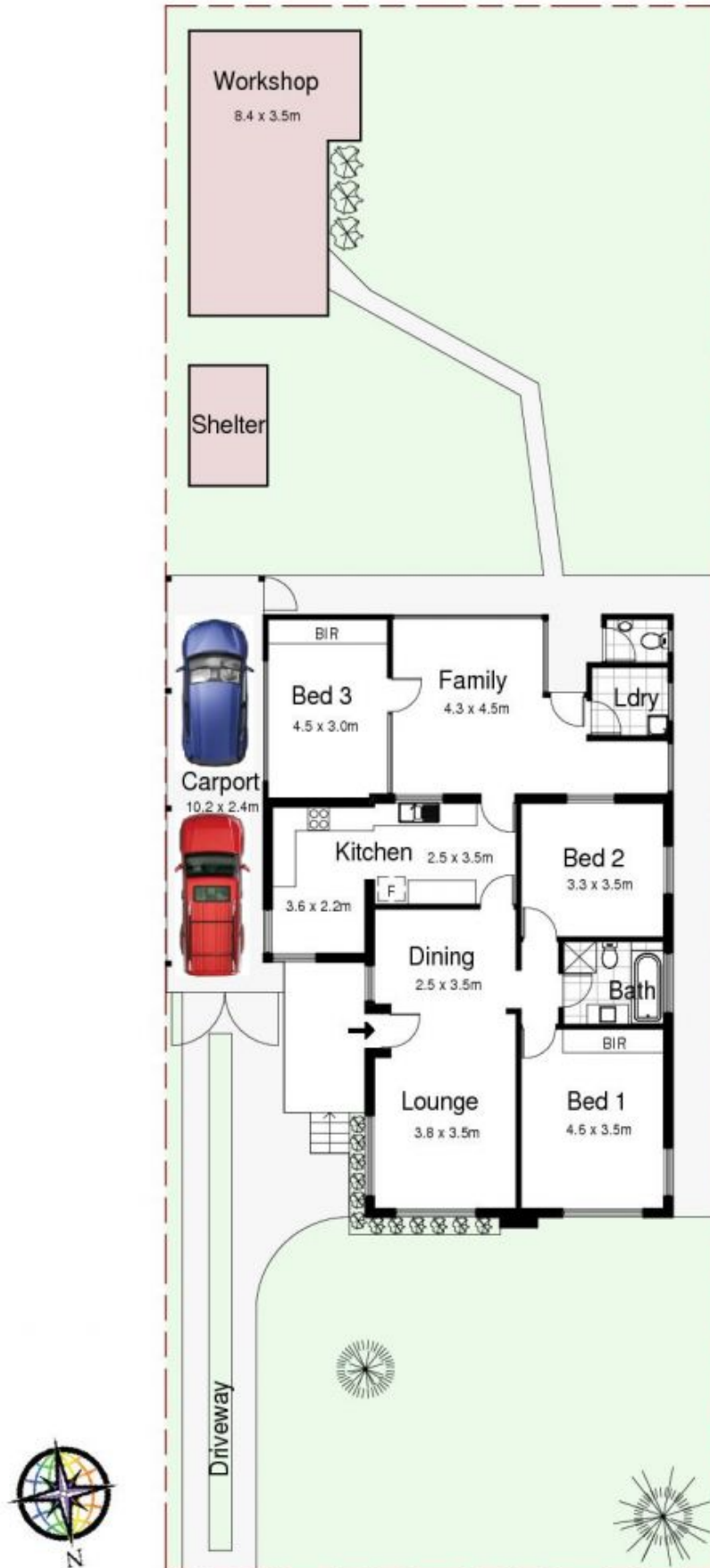
Positioned in a premium locale overlooking Cronulla Golf Course, this single storey 3 bedroom property offers endless possibilities and opportunities.

Presented in neat and tidy original condition, the property offers further scope to improve and add value by renovating, extending, rebuilding or developing - taking advantage of the (R3) zoning which allows for a 70% floor space building ratio and 9 metre height allowance.

- King sized main bedroom with built in robe, 2nd bedroom also with build in robe
- Combined lounge & dining area overlooking the golf course, additional rumpus area
- Full bathroom with bathroom, additional toilet, eat in style kitchen, internal laundry
- Split system air-con, pleasant leafy north facing views over

Land Size : 537.5 sqm

View : <https://www.paynepacific.com.au/sale/nsw/sutherland/cronulla/residential/house/5873938>



52 Hume Road, CRONULLA

DISCLAIMER: All care has been taken in preparing this floorplan, however the accuracy is not guaranteed and no liability will be accepted for any reliance placed upon it.
Produced by PRODUCT PHOTOGRAPHY STUDIO mob: 0414 697 215 email: mgphoto@people.net.au