



**328 Willarong Road Caringbah South NSW**

5 3 3

Blending generous proportions with exceptional versatility, this dual living family home offers a flexible floor plan and offers the perfect opportunities to renovate or redevelop.

This welcoming family home has been lovingly held by the same family for 50 years. Potential for those seeking a blank canvas and providing plenty of scope to renovate to suit your family requirements. Update and add value or capitalise on the investment opportunity.

Set on a large corner block representing an excellent opportunity to renovate or redevelop (STCA) (Zoned R2 Low Density Residential).

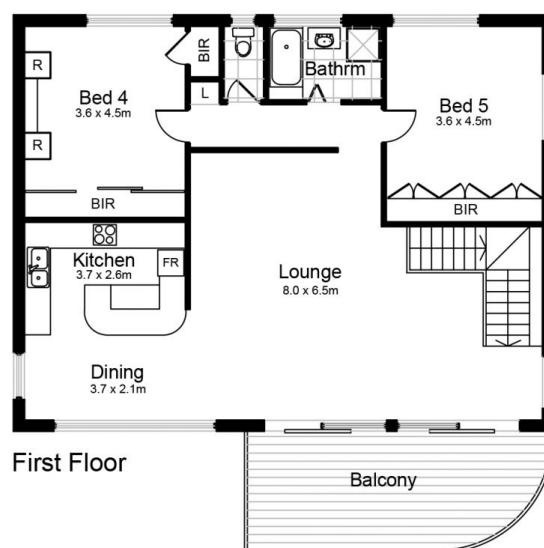
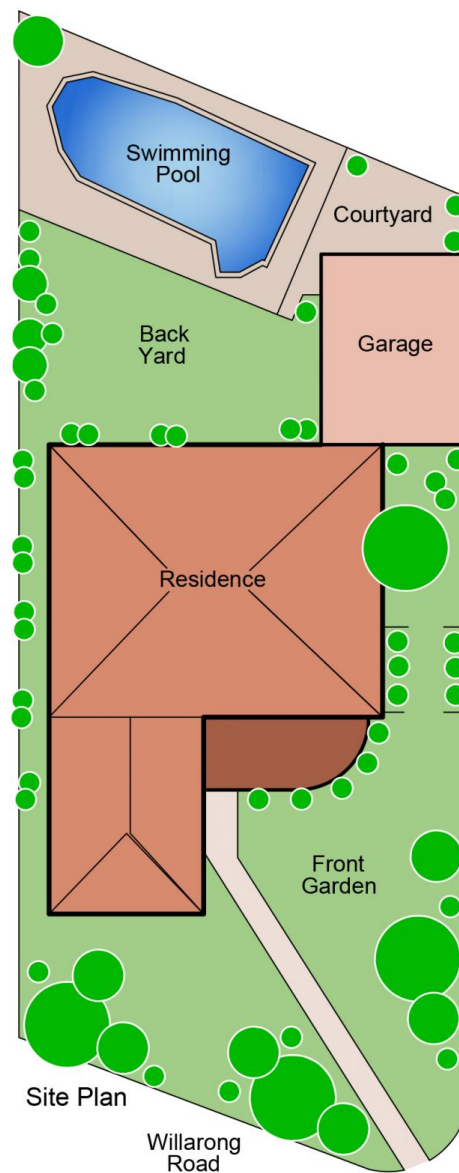
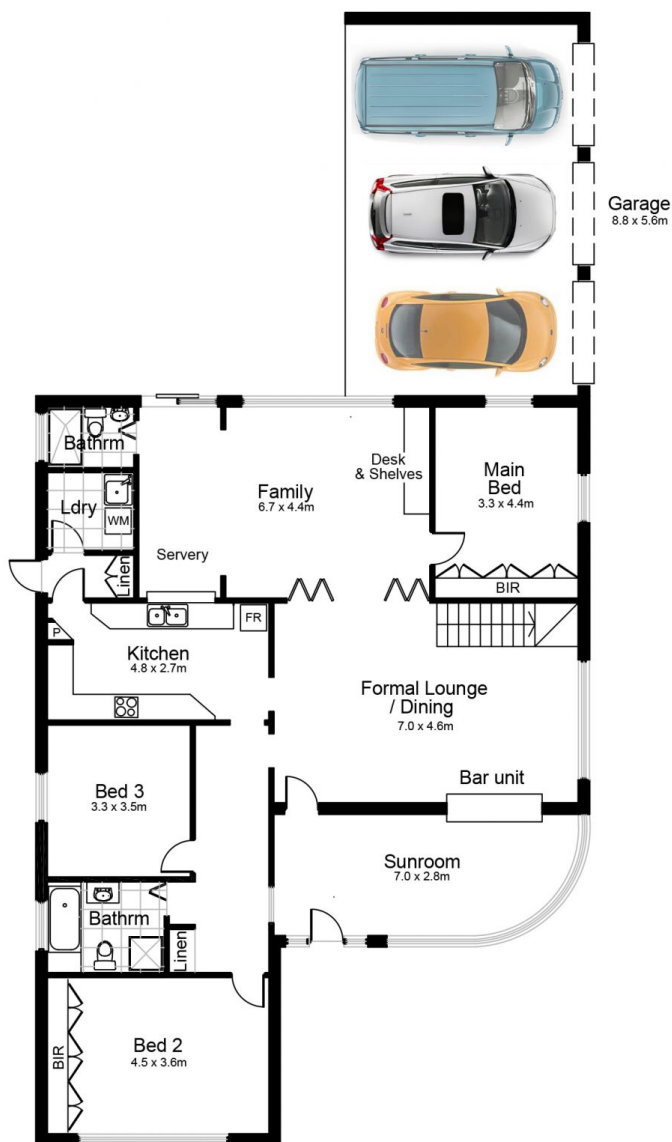
Offering separate dual family accommodation featuring separate kitchen, spacious lounge/dining area, two bedrooms, full bathroom and sunny balcony on the upper

**Price** : \$ 1,715,000

**View** : <https://www.paynepacific.com.au/sale/nsw/sutherland/caringbah-south/residential/house/5873796>



**Christian Payne**  
**9544 0000**



## 328 Willarong Road, CARINGBAH SOUTH

DISCLAIMER: All care has been taken in preparing this floor plan however the accuracy is not guaranteed and no liability will be accepted for any reliance placed upon it  
 Produced by PRODUCT PHOTOGRAPHY STUDIO mob: 0414 697 215 email: mgphoto@people.net.au