



6a Restormel Street Woollooware NSW

4 3 2

Offering contemporary architecturally designed interiors, this recently completed Torrens Title home comprises relaxed luxurious family living. Enjoying the highest quality workmanship, it makes superb use of space and light for growing families or downsizers looking to enjoy the convenience this easy living home offers.

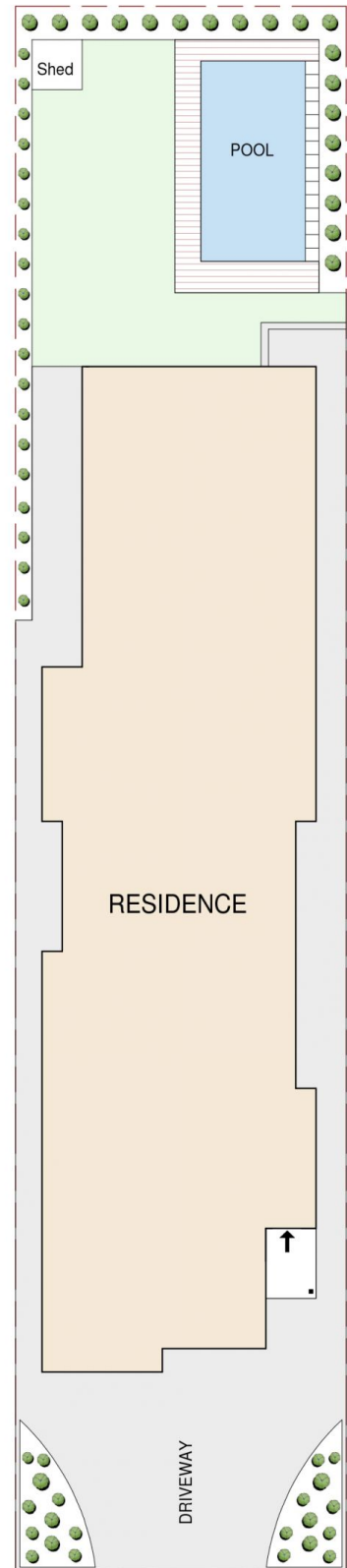
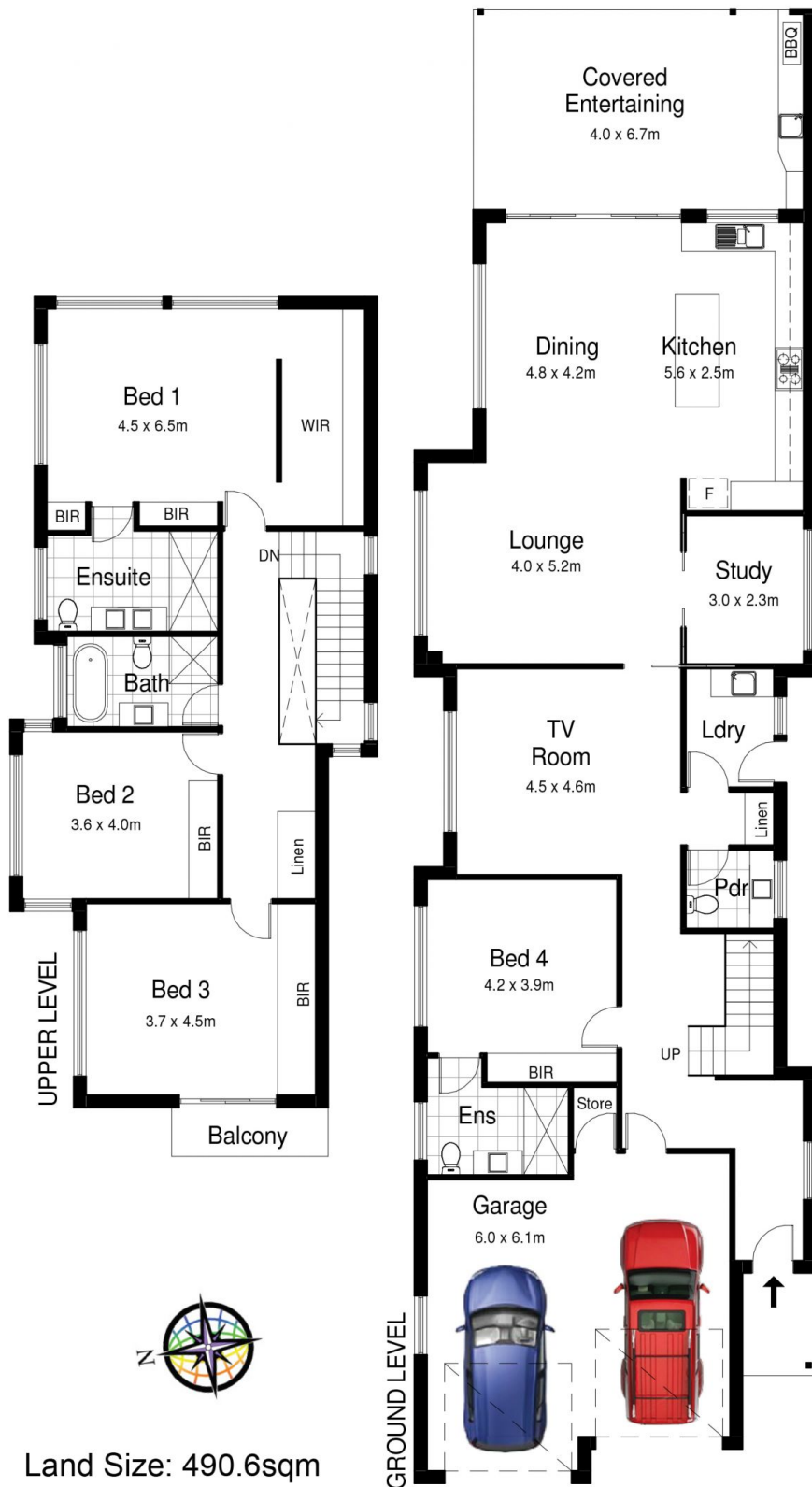
Price : \$ 1,570,000
Land Size : 490.6 sqm
View : <https://www.paynepacific.com.au/sale/nsw/sutherland/woollooware/residential/house/5873794>

Intelligently capturing plenty of natural light, this family home includes four generous bedrooms, the luxury master retreat with views over Cronulla Golf Course features ensuite and additional walk in dressing room. A further master/guest room downstairs also features an ensuite and built in robe.

With flexible living spaces, separate living TV room, spacious lounge dining flowing to open plan luxury kitchen with stone bench top and quality Smeg gas appliances.



Christian Payne
9544 0000



6a Restormel Street, WOOLLOOWARE

DISCLAIMER: All care has been taken in preparing this floorplan, however the accuracy is not guaranteed and no liability will be accepted for any reliance placed upon it
 Produced by PRODUCT PHOTOGRAPHY STUDIO mob: 0414 697 215 email: mgphoto@people.net.au