



## 29 Kurrajong Street Sutherland NSW

4 2 4

Offering generous interiors and relaxed family living. This large home makes superb use of space and light. It is ideal for growing families or dual family living - families looking to enjoy the convenience this easy living home offers.

This family home includes 4 generous bedrooms plus a study. The master bedroom includes large walk through wardrobe and extra spacious ensuite. All three additional bedrooms have built in robes.

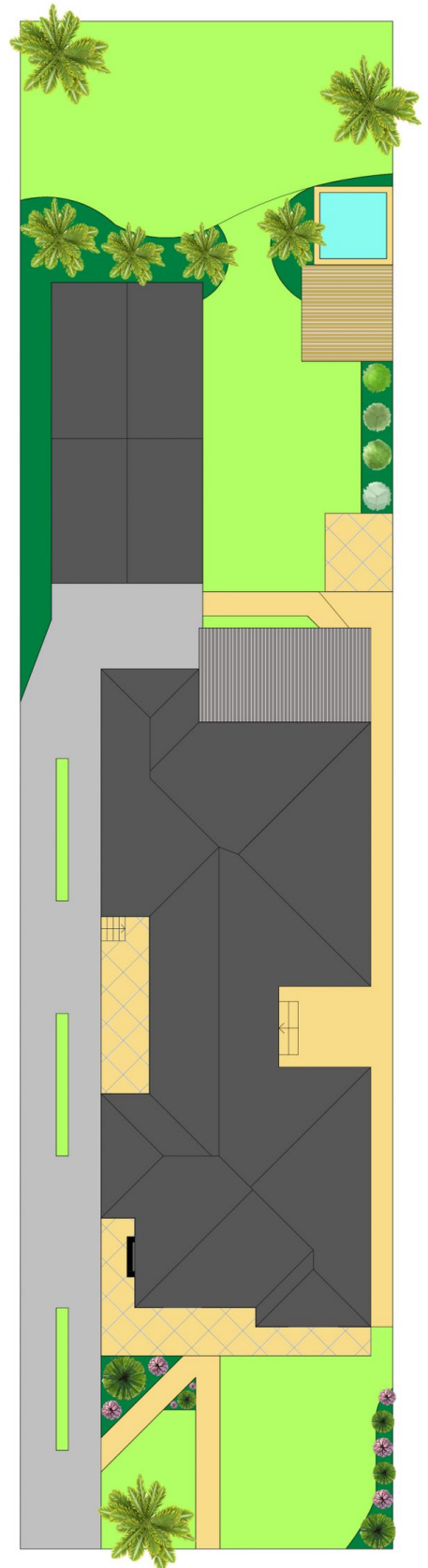
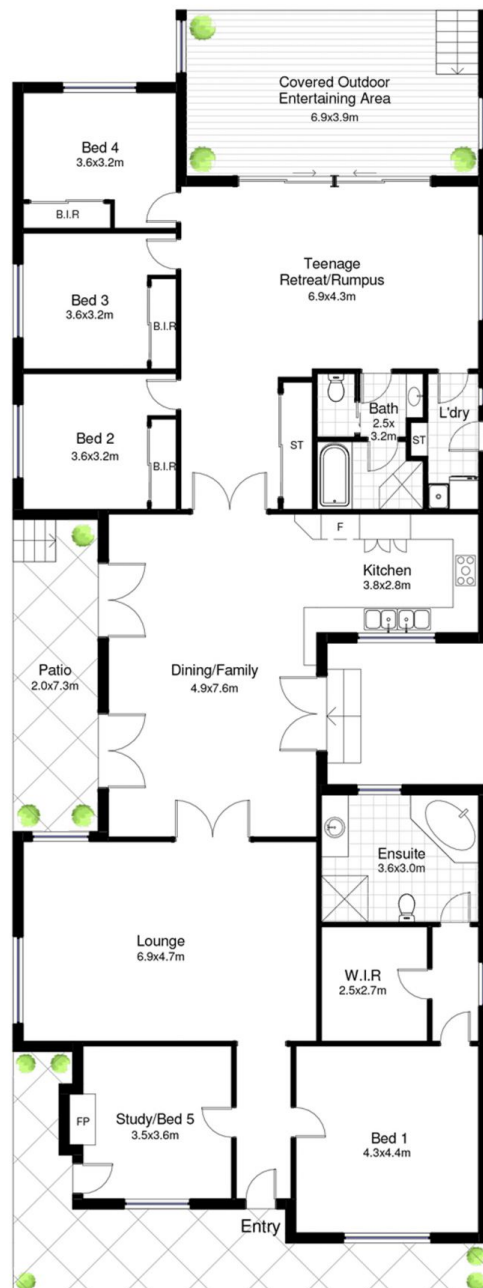
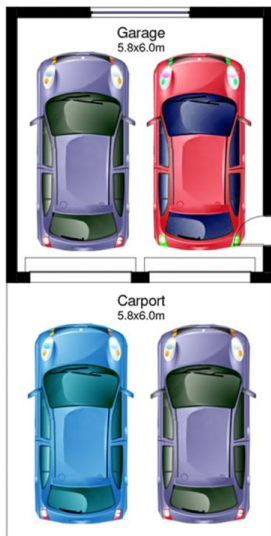
With flexible living spaces, including separate living TV room, spacious dining room flowing to large open plan kitchen. The additional family room is perfect for teenagers or extended family

The large covered outside verandah is ideal for entertaining

**Land Size** : 1021 sqm  
**View** : <https://www.paynepacific.com.au/sale/nsw/sutherland/sutherland/residential/house/5873788>



**Christian Payne**  
9544 0000



## 29 Kurrajong Street, Sutherland

DISCLAIMER: All care has been taken in preparing this floor plan, however the accuracy is not guaranteed and no liability will be accepted for any reliance placed upon it.

Produced by PRODUCT PHOTOGRAPHY STUDIO mob: 0414 697 215 email: mgphoto@people.net.au