



16/1-7 Allison Road Cronulla NSW

2 2 1

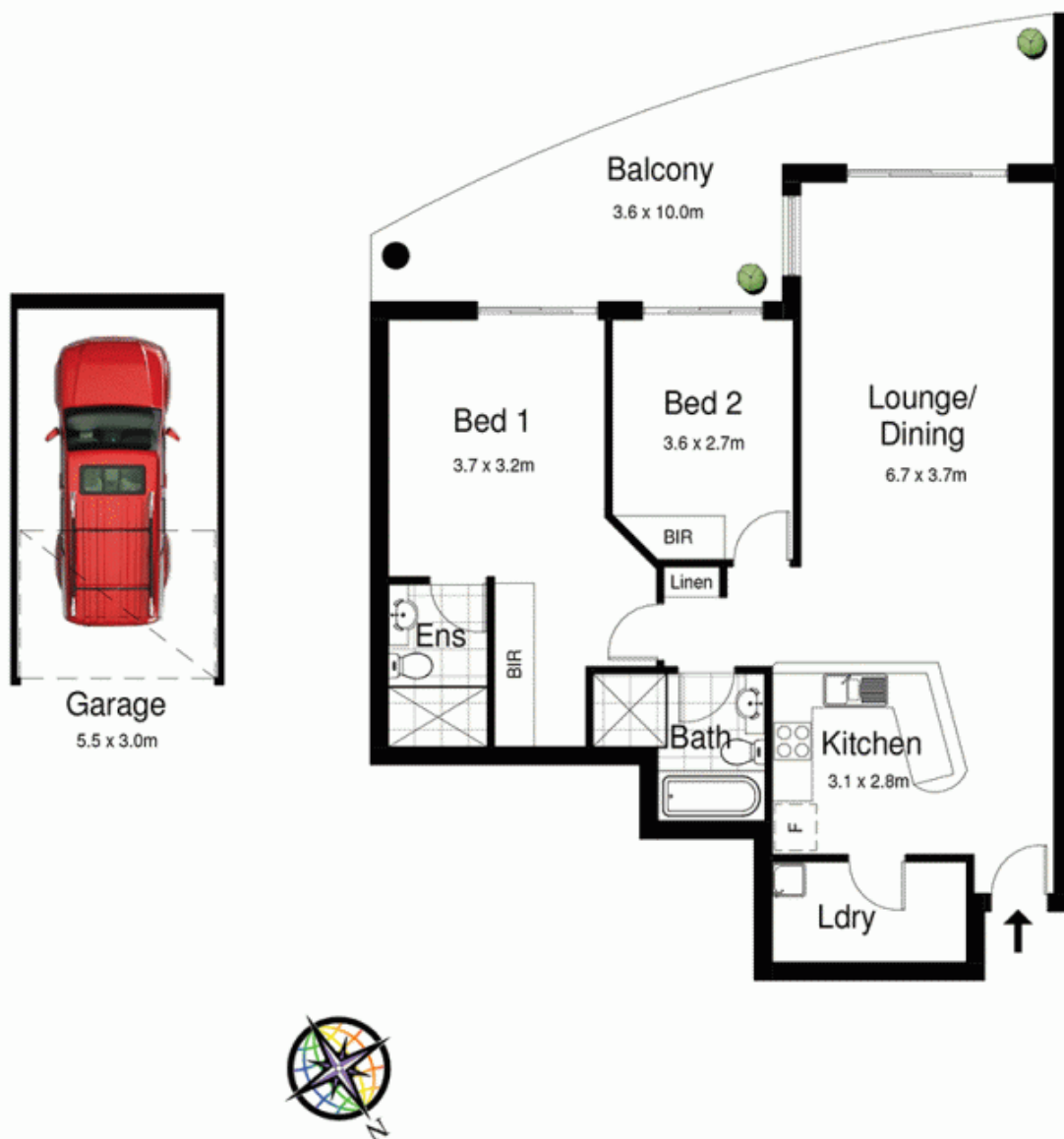
Enjoying a leafy outlook from its elevated perch in a premier South Cronulla street, this spacious apartment effortlessly epitomises a timeless sense of elegance whilst embracing contemporary style, with a choice of indoor and outdoor living. Watch the video to see so much more.

Set in a peaceful pocket of a vibrant locale, this charming apartment is in a beautifully maintained security block with internal lift. It has a stylish contemporary interior, and is within walking distance of Gunnamatta Bay and Shelly Park. You'll also be close to Cronulla Mall, the train and ferry, and if you're an exercise enthusiast, you'll love walking or running along the Esplanade.

Key Features:

Open plan lounge and dining area leading to oversized undercover balcony

View : <https://www.paynepacific.com.au/sale/nsw/sutherland/cronulla/residential/apartment/5873582>



16/1-7 Allison Road, CRONULLA

DISCLAIMER: All care has been taken in preparing this floorplan, however the accuracy is not guaranteed and no liability will be accepted for any reliance placed upon it
Produced by PRODUCT PHOTOGRAPHY STUDIO mob: 0414 697 215 email: mgphoto@people.net.au