



### 11/513 Kings Way Miranda NSW

2 2 1

This apartment at 513 Kingsway offers a serene, inspiring residence with outdoor space, clean lines and art deco design. Just moments from Miranda Fair and the train station, yet quiet and with a delightful outlook.

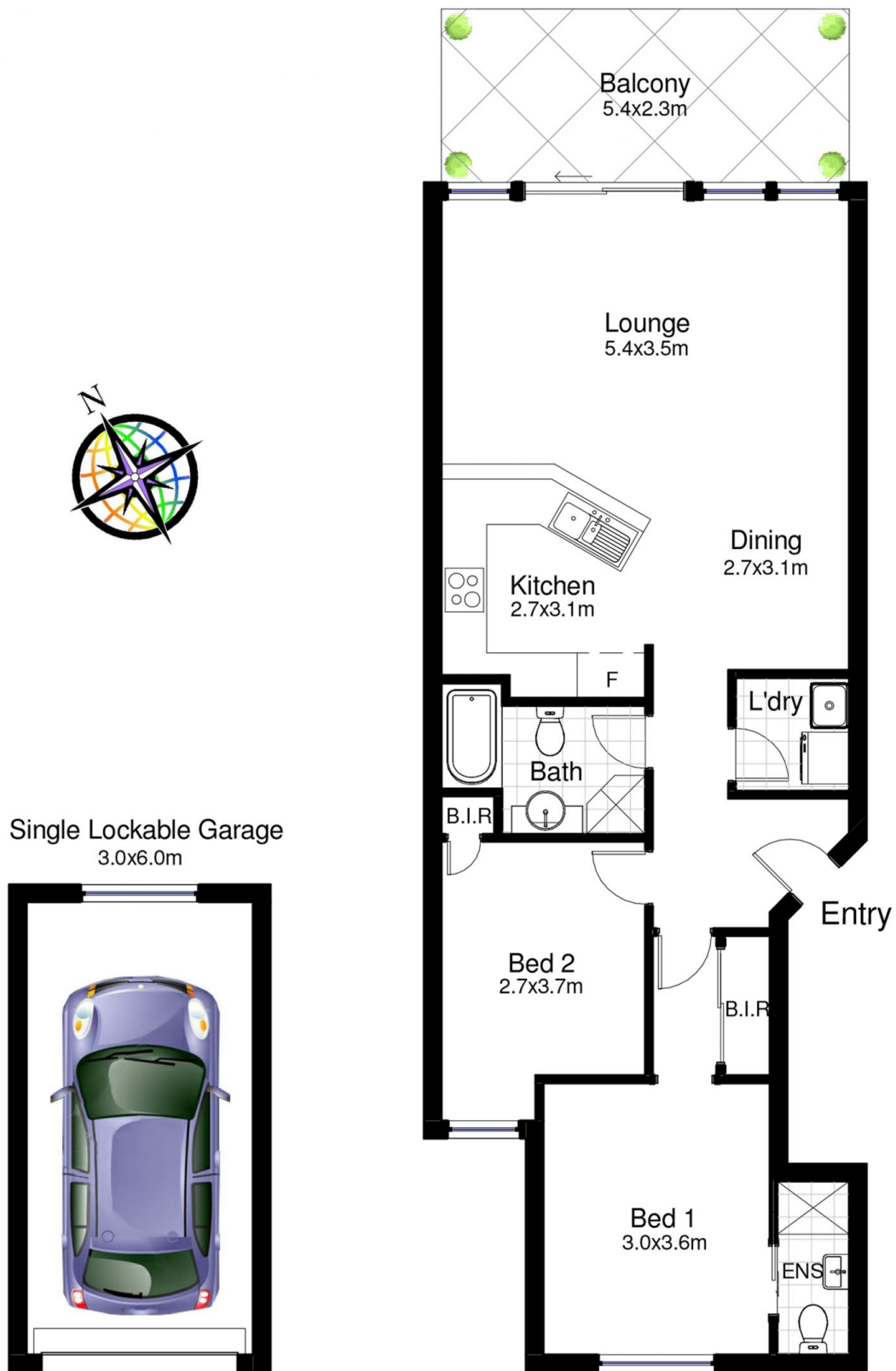
Enjoy the private views to the city from your spacious balcony overlooking the buildings' gardens.

Apartment 11 has an open plan living, dining and kitchen area. The living area leads directly out to the balcony with city and garden views and the kitchen and bathroom both have modern, easy finishes that would please any entertainer.

#### KEY FEATURES:

Fabulous north-easterly aspect  
Security building

**Building Size** : 89 sqm  
**View** : <https://www.paynepacific.com.au/sale/nsw/sutherland/miranda/residential/apartment/5873511>



## 11/513 Kingsway, Miranda

DISCLAIMER: All care has been taken in preparing this floor plan, however the accuracy is not guaranteed and no liability will be accepted for any reliance placed upon it.  
 Product by PRODUCT PHOTOGRAPHY STUDIO mob: 0414 697 215 email: mgphoto@people.net.au