



22 Rutherford Avenue Burraneer NSW

6 4 2

"Minnamurra" is one of Sydney South's most precious historic homes, built in the 1920's and set on a 902sqm parcel of prestige waterside land.

Exuding authentic charm and character, meticulously maintained and renovated to create a fusion of impressive proportions, classic design, modern comforts and relaxed family living.

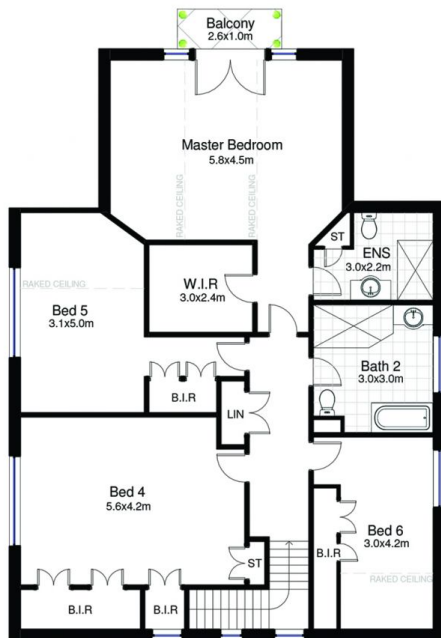
Standing proudly at the pinnacle of the Burraneer peninsular, in one of Sydney South's most prestigious and sought-after streets, "Minnamurra" an Aboriginal term for "Plenty of Fish" symbolises its geographic position to the stunning Port Hacking waterways.

Originally owned and constructed by the famous "Taubman Paints Family", John Taubman's desire for perfection and

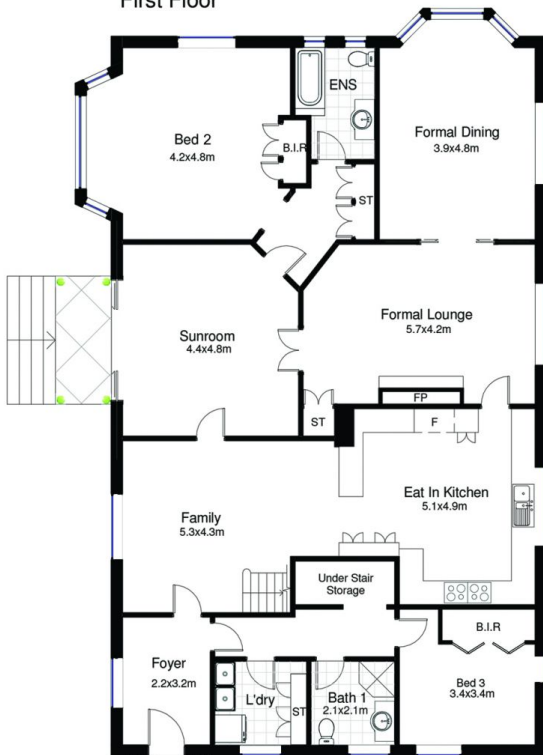
Price : \$ 2,625,000
Land Size : 902 sqm
View : <https://www.paynepacific.com.au/sale/nsw/sutherland/burraneer/residential/house/5873437>



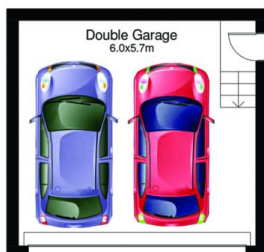
Christian Payne
9544 0000



First Floor



Ground Floor



Garage



22 Rutherford Avenue, Burraneer

DISCLAIMER: All care has been taken in preparing this floor plan, however the accuracy is not guaranteed and no liability will be accepted for any reliance placed upon it.
Product by PRODUCT PHOTOGRAPHY STUDIO mob: 0414 697 215 email: mgphoto@people.net.au

