




1/20 Marlo Road CRONULLA NSW

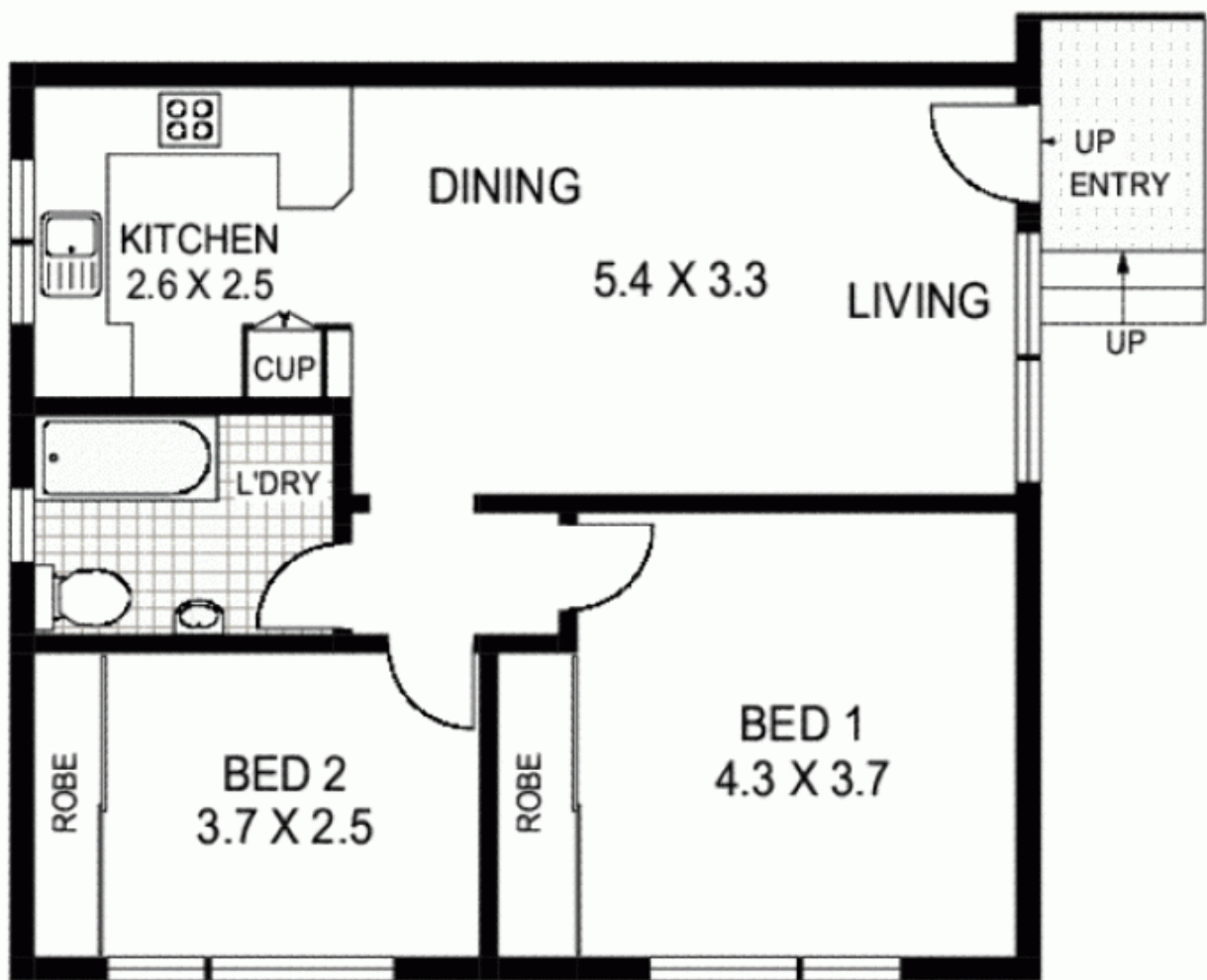
2  1  1 

Tucked away in a quiet street just moments from the beach and main restaurant strip of Cronulla, this neatly planned 2 bedroom unit presents either a fabulous investment opportunity or a great starter for young couples looking for the classic Cronulla lifestyle.

Situated on the northern side of a small modern block of eight, it offers two north-facing bedrooms, both with mirrored built-ins, a neatly planned updated kitchen with eat-in bench and plenty of cupboard space, updated full bathroom with timber finishes, internal laundry facilities, and polished timber floors.

Complete with a car space, extra storage locker at the back of the block, a small private porch at the entry and a leafy outlook, this compact ground floor unit proves that good things come in small packages

View : <https://www.paynepacific.com.au/sale/nsw/sutherland/cronulla/residential/apartment/5873144>



ELEVATED GROUND FLOOR



1/20 MARLO ROAD

CRONULLA

Floor Plan Disclaimer: Mind the Gap (mtg) floor plans / site plans are intended as a guide only. No representations or warranties of any nature whatsoever are given or intended and any person using this information should always rely on their own enquiries. mtg property marketing services • 1300 133 145 • photography, floor plans, virtual tours, video tours, copywriting, project marketing • www.mindthegap.com.au



Payne Pacific Real Estate gives no guarantees or warranties concerning the accuracy or completeness of the information provided, and accepts no liability for any loss or damage suffered as a result of the use by any person of the contents of this document. It may not be reproduced by any process, electronic or otherwise, in any form, without the prior written permission of Payne Pacific Real Estate, except as permitted under the Copyright Act 1996.