



### 3/50 Seaview Street CRONULLA NSW

2 1 1

This comfortable two bedroom apartment is an ideal step into the Cronulla market for a couple, young family, or investor.

One of the first impressions of this modern, security-access block is its high, light-filled atrium-style entry.

The moment you walk inside the apartment, your eyes lead out to the grassed common garden area which adjoins the balcony.

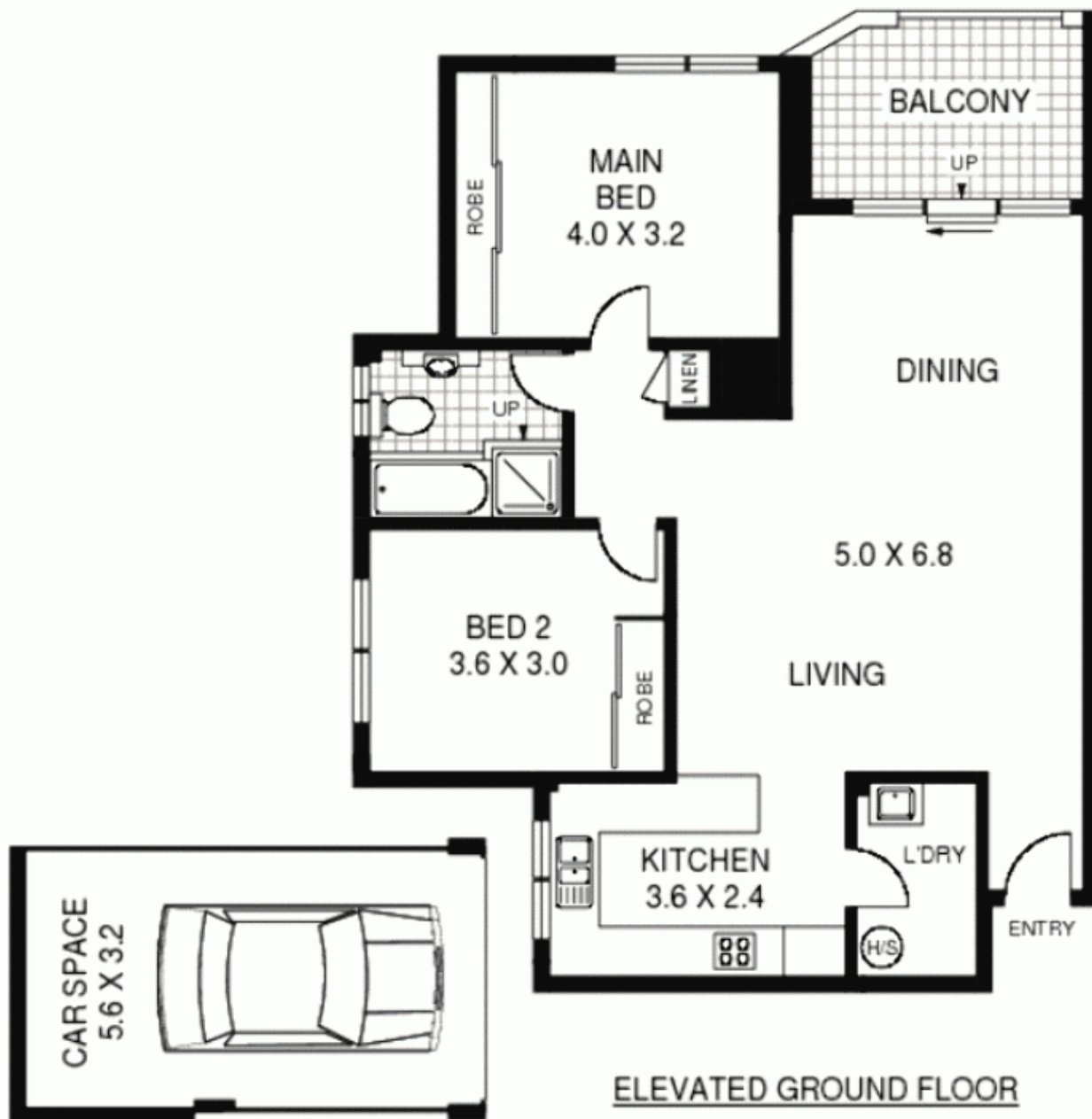
The apartments large master bedroom, with its mirror-front built-in robe, can comfortably contain a queen-sized bed and side tables.

The second bedroom, also with built in mirror-front built-in robe, is double bed sized.

An easy-care, all electric appliances kitchen features granite bench tops and polyurethane cupboards.

The kitchen adjoins the spacious, open plan dining and lounge areas, which together flow to a tiled balcony ideal

**View :** <https://www.paynepacific.com.au/sale/nsw/sutherland/cronulla/residential/apartment/5873141>



**3/50 SEAVIEW STREET**

**CRONULLA**

**Floor Plan Disclaimer: Mind the Gap** (mtg) floor plans / site plans are intended as a guide only. No representations or warranties of any nature whatsoever are given or intended and any person using this information should always rely on their own enquiries. mtg property marketing services - 1300 133 145 - photography, floor plans, virtual tours, video tours, copywriting, project marketing - [www.mindthegap.com.au](http://www.mindthegap.com.au)



Payne Pacific Real Estate gives no guarantees or warranties concerning the accuracy or completeness of the information provided, and accepts no liability for any loss or damage suffered as a result of the use by any person of the contents of this document. It may not be reproduced by any process, electronic or otherwise, in any form, without the prior written permission of Payne Pacific Real Estate, except as permitted under the Copyright Act 1996.