



**4/227 President Avenue MIRANDA NSW**

**3** **2** **2**

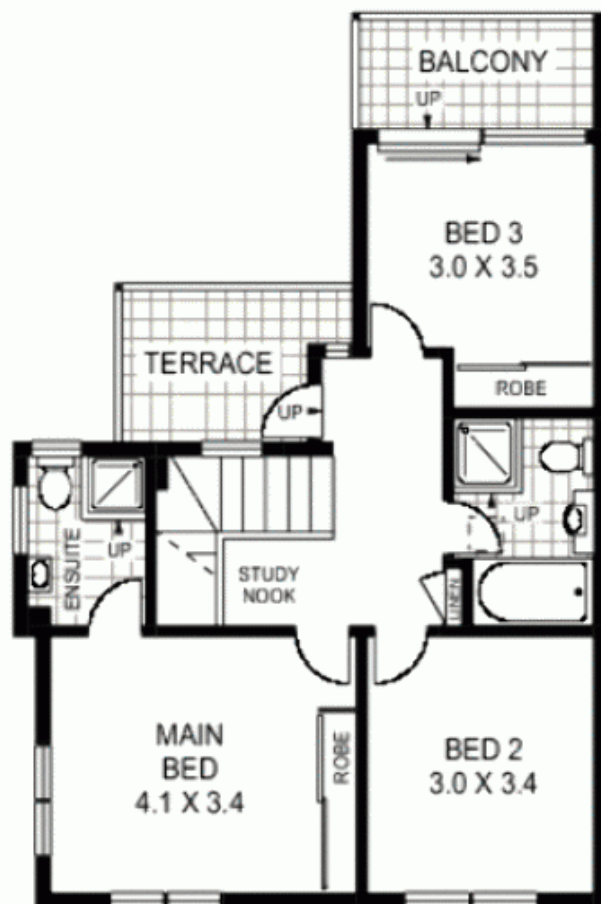
This generous modern townhouse is sure to impress. Featuring a modern kitchen with bright open plan living spaces leading out to a large private courtyard perfect for entertaining. Upstairs are three large bedrooms all with mirrored built-in robes, the main bedroom with ensuite. The second bedroom opens onto a balcony, all bedrooms representing space, light and comfort. This well presented, quiet, delightful townhouse offers easy living in a super convenient location only minutes to Westfield Miranda, schools and transport. A single garage with additional carport and ample storage ensures value and represents a wonderful opportunity for first home buyers or investors.

**View :** <https://www.paynepacific.com.au/sale/nsw/sutherland/miranda/residential/townhouse/5873137>

BED: 3  
BATH: 2  
CAR: 2



GROUND FLOOR



FIRST FLOOR



4/227 PRESIDENT AVENUE

MIRANDA

**Floor Plan Disclaimer:** Mind the Gap (mtg) floor plans / site plans are intended as a guide only. No representations or warranties of any nature whatsoever are given or intended and any person using this information should always rely on their own enquiries. mtg property marketing services - 1300 133 145 - photography, floor plans, virtual tours, video tours, copywriting, project marketing - [www.mindthegap.com.au](http://www.mindthegap.com.au)



Payne Pacific Real Estate gives no guarantees or warranties concerning the accuracy or completeness of the information provided, and accepts no liability for any loss or damage suffered as a result of the use by any person of the contents of this document. It may not be reproduced by any process, electronic or otherwise, in any form, without the prior written permission of Payne Pacific Real Estate, except as permitted under the Copyright Act 1950.