



**14/62 Parramatta Street CRONULLA NSW**

2 1 1

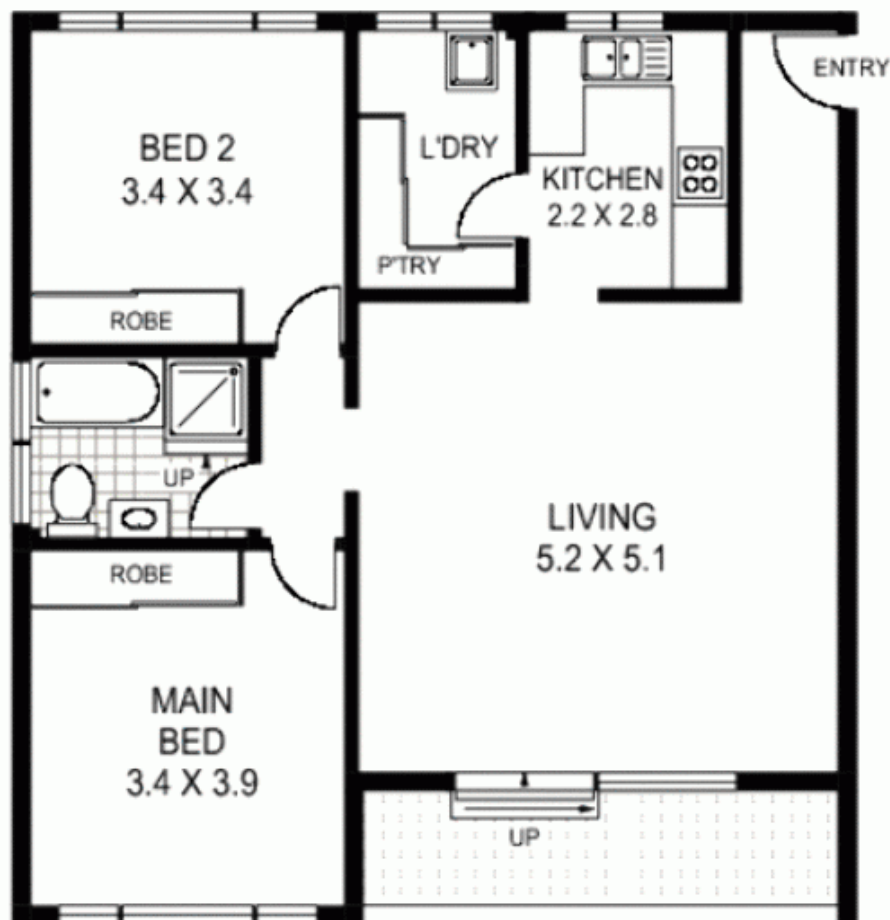
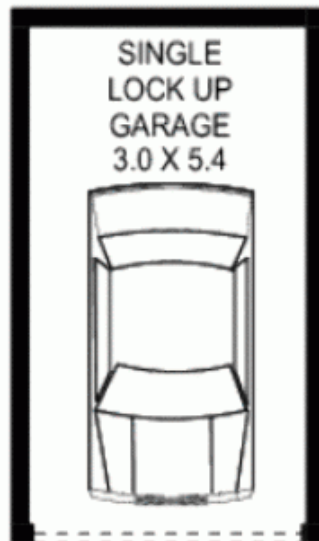
This neat sunny apartment offers an elevated ground floor position and is securely located within an extremely well maintained complex surrounded by landscaped gardens.

Conveniently located in a leafy street just a short walk to Shelly Beach, Cronulla Mall, restaurants, cafes and Cronulla station, its sought-after lifestyle location makes it a great opportunity for first-home buyers or investors alike.

The apartment has a large combined living area opening to a balcony with leafy street outlook which is perfectly orientated to capture afternoon sun. The kitchen flows off the living room and adjoins a large laundry with built-in storage.

There are two good-sized bedrooms with built-ins plus a large bathroom with separate shower recess and full-size

**View :** <https://www.paynepacific.com.au/sale/nsw/sutherland/cronulla/residential/apartment/5873130>



**ELEVATED GROUND FLOOR**

**paynepacific**  
REAL ESTATE  
SALES • LEASING • VALUATIONS



**14/62 PARRAMATTA STREET**

**CRONULLA**

**Floor Plan Disclaimer: Mind the Gap** (mtg) floor plans / site plans are intended as a guide only. No representations or warranties of any nature whatsoever are given or intended and any person using this information should always rely on their own enquiries. mtg property marketing services - 1300 133 145 - photography, floor plans, virtual tours, video tours, copywriting, project marketing - [www.mindthegap.com.au](http://www.mindthegap.com.au)

Payne Pacific Real Estate gives no guarantees or warranties concerning the accuracy or completeness of the information provided, and accepts no liability for any loss or damage suffered as a result of the use by any person of the contents of this document. It may not be reproduced by any process, electronic or otherwise, in any form, without the prior written permission of Payne Pacific Real Estate, except as permitted under the Copyright Act 1996.