



1/27 Wyanbah Road CRONULLA NSW

3 3 2

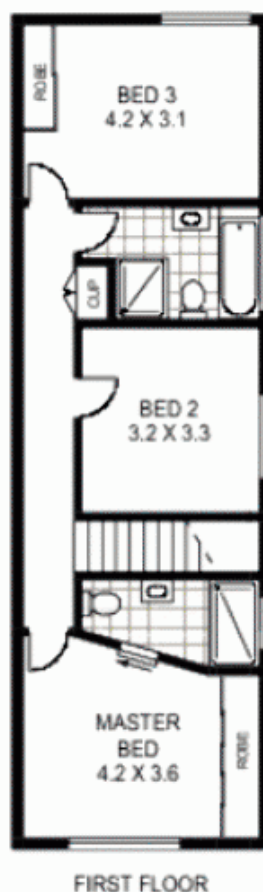
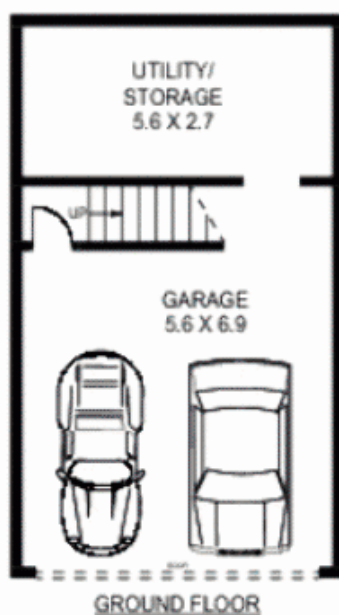
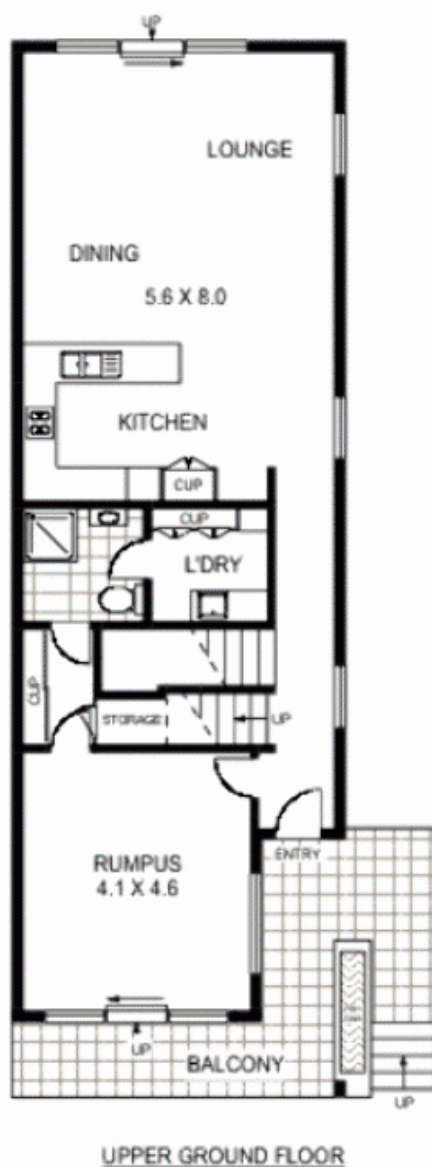
This expansive, impeccably presented house-like duplex residence has been designed for effortless indoor/outdoor entertaining. A highlight is its deep west-facing garden oasis complete with an eight-seater spa and covered terrace for year-round outdoor dining.

Its flexible floorplan accommodates three upper level bedrooms plus a total of three bathrooms, the main with a bath, including a master suite enjoying ocean cameos.

A spacious lounge room features a balcony, ensuite, built-ins and private entry, making an ideal fourth bedroom suite if desired.

Encompassing a stylish contemporary CaesarStone kitchen, the generous open-plan living/dining space flows seamlessly to the garden.

View : <https://www.paynepacific.com.au/sale/nsw/sutherland/cronulla/residential/semi-detached/5873123>



1/27 WYANBAH ROAD

CRONULLA

Floor Plan Disclaimer: Mind the Gap (mtg) floor plans / site plans are intended as a guide only. No representations or warranties of any nature whatsoever are given or intended and any person using this information should always rely on their own enquiries. mtg property marketing services - 1300 133 145 - photography, floor plans, virtual tours, video tours, copywriting, project marketing - www.mindthegap.com.au



Payne Pacific Real Estate gives no guarantees or warranties concerning the accuracy or completeness of the information provided, and accepts no liability for any loss or damage suffered as a result of the use by any person of the contents of this document. It may not be reproduced by any process, electronic or otherwise, in any form, without the prior written permission of Payne Pacific Real Estate, except as permitted under the Copyright Act 1968.