



354 Woollooware Road BURRANEER NSW

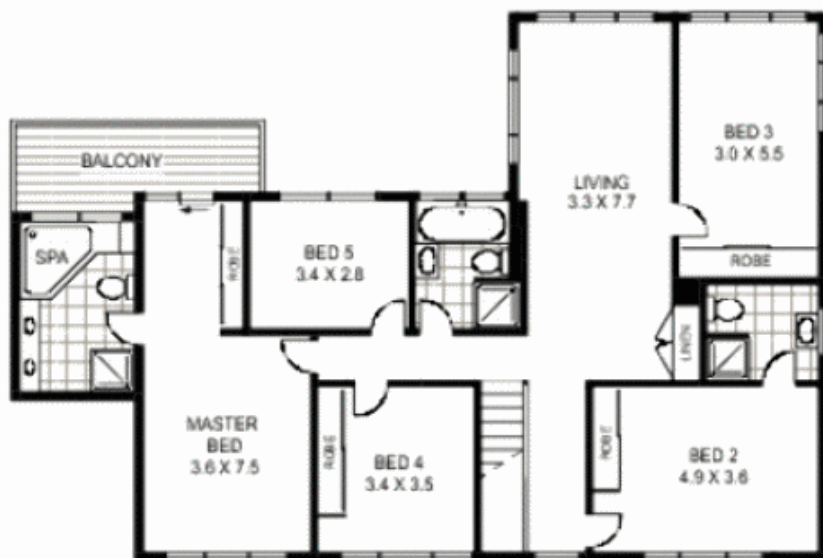
5 3 2

This modern, two-storey brick rendered home with in-ground pool and water glimpses to Gunnamatta Bay has everything a modern family needs to live and grow. Perfectly situated on a nice wide block of land at the quiet end of picturesque Woollooware Road, it nestles comfortably amongst other prestige homes and presents beautifully from the street with manicured hedging and wrought iron gates.

Featuring polished floors in its foyer and kitchen, it has a modern family-friendly layout with living areas downstairs and bedrooms upstairs.

On entry there is a spacious timber kitchen with Smeg appliances and breakfast bar that steps down to a casual living area with a wood burning fire.

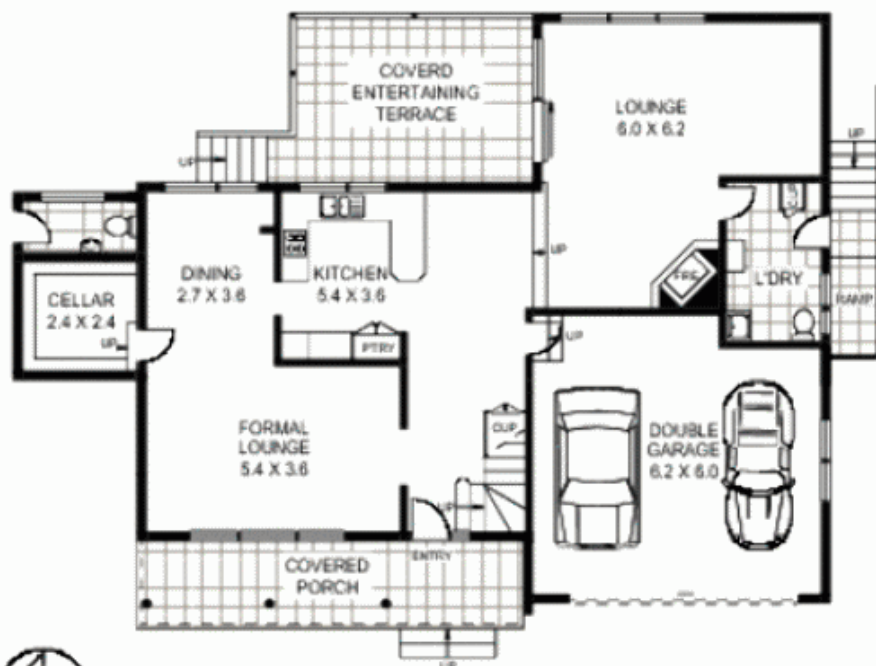
View : <https://www.paynepacific.com.au/sale/nsw/sutherland/burraneer/residential/house/5873121>



FIRST FLOOR



SITE PLAN



GROUND FLOOR



354 WOOLLOOWARE ROAD

BURRANEER

Floor Plan Disclaimer: Mind the Gap (mtg) floor plans / site plans are intended as a guide only. No representations or warranties of any nature whatsoever are given or intended and any person using this information should always rely on their own enquiries. mtg property marketing services - 1300 133 145 - photography, floor plans, virtual tours, video tours, copywriting, project marketing - www.mindthegap.com.au



Payne Pacific Real Estate gives no guarantees or warranties concerning the accuracy or completeness of the information provided, and accepts no liability for any loss or damage suffered as a result of the use by any person of the contents of this document. It may not be reproduced by any process, electronic or otherwise, in any form, without the prior written permission of Payne Pacific Real Estate, except as permitted under the Copyright Act 1958.