



### 19 Forest Road YOWIE BAY NSW

5 2 4

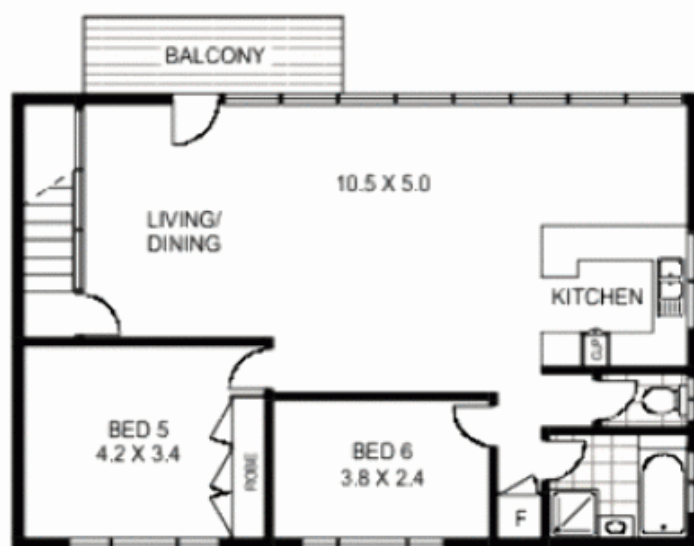
A wonderful lifestyle purchase in a perfect family location, this comfortable home is peacefully positioned just moments from the Yowie Bay waterfront and boat ramp. Westfield Miranda, the train station and a number of local schools are conveniently located just a brief walk from its door.

Ideal for those with large or extended families, the two-storey home accommodates five bedrooms, a roomy office and two bathrooms. The expansive upper level incorporates a vast casual living space with a kitchenette and balcony, creating the perfect retreat for teenagers or guests.

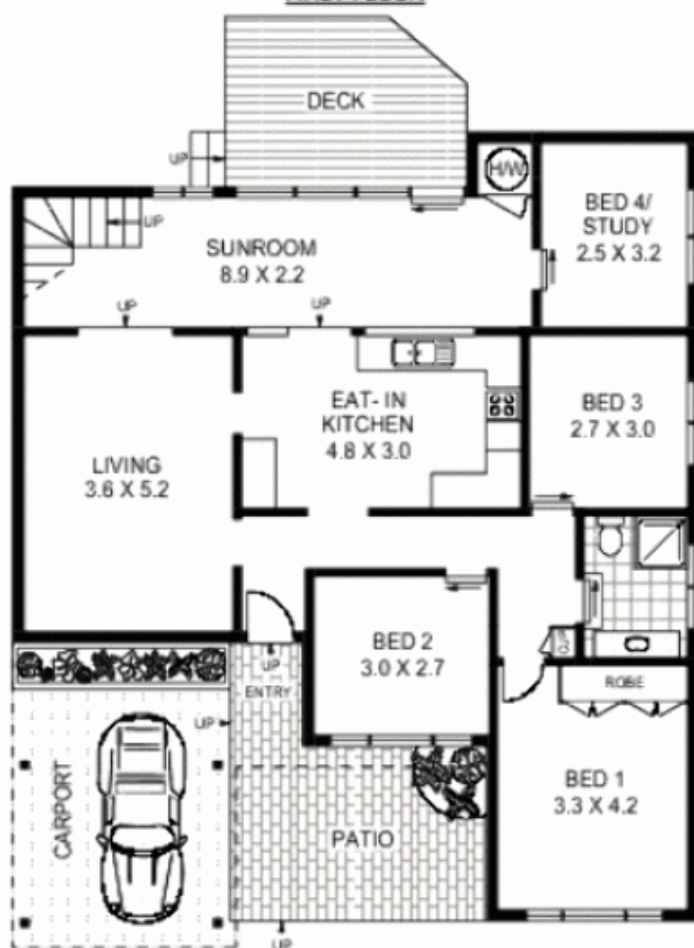
At the heart of the home a spacious dine-in kitchen extends to both an air conditioned lounge room and a sunroom flowing to a deck.

**View :** <https://www.paynepacific.com.au/sale/nsw/sutherland/yowie-bay/residential/house/5873119>





FIRST FLOOR



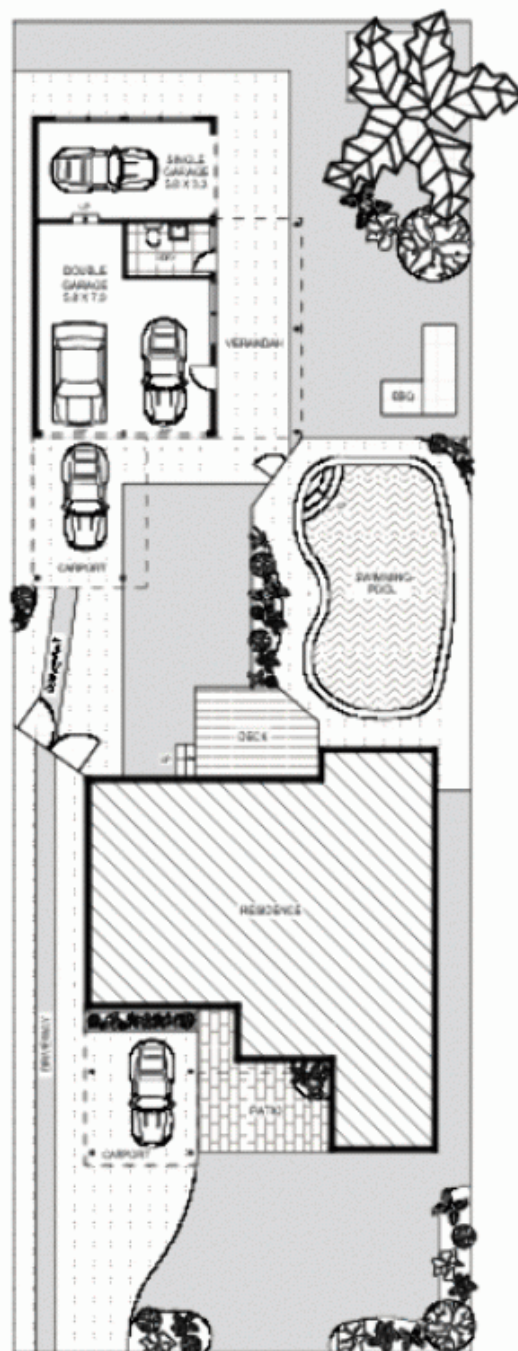
GROUND FLOOR



19 FOREST ROAD

YOWIE BAY

Floor Plan Disclaimer: Mind the Gap (mtg) floor plans / site plans are intended as a guide only. No representations or warranties of any nature whatsoever are given or intended and any person using this information should always rely on their own enquiries. mtg property marketing services - 1300 133 145 - photography, floor plans, virtual tours, video tours, copywriting, project marketing - [www.mindthegap.com.au](http://www.mindthegap.com.au)



SITE PLAN



Payne Pacific Real Estate gives no guarantees or warranties concerning the accuracy or completeness of the information provided, and accepts no liability for any loss or damage suffered as a result of the use by any person of the contents of this document. It may not be reproduced by any process, electronic or otherwise, in any form, without the prior written permission of Payne Pacific Real Estate, except as permitted under the Copyright Act 1956.