

8/16-20 Pembroke Street SYLVANIA NSW

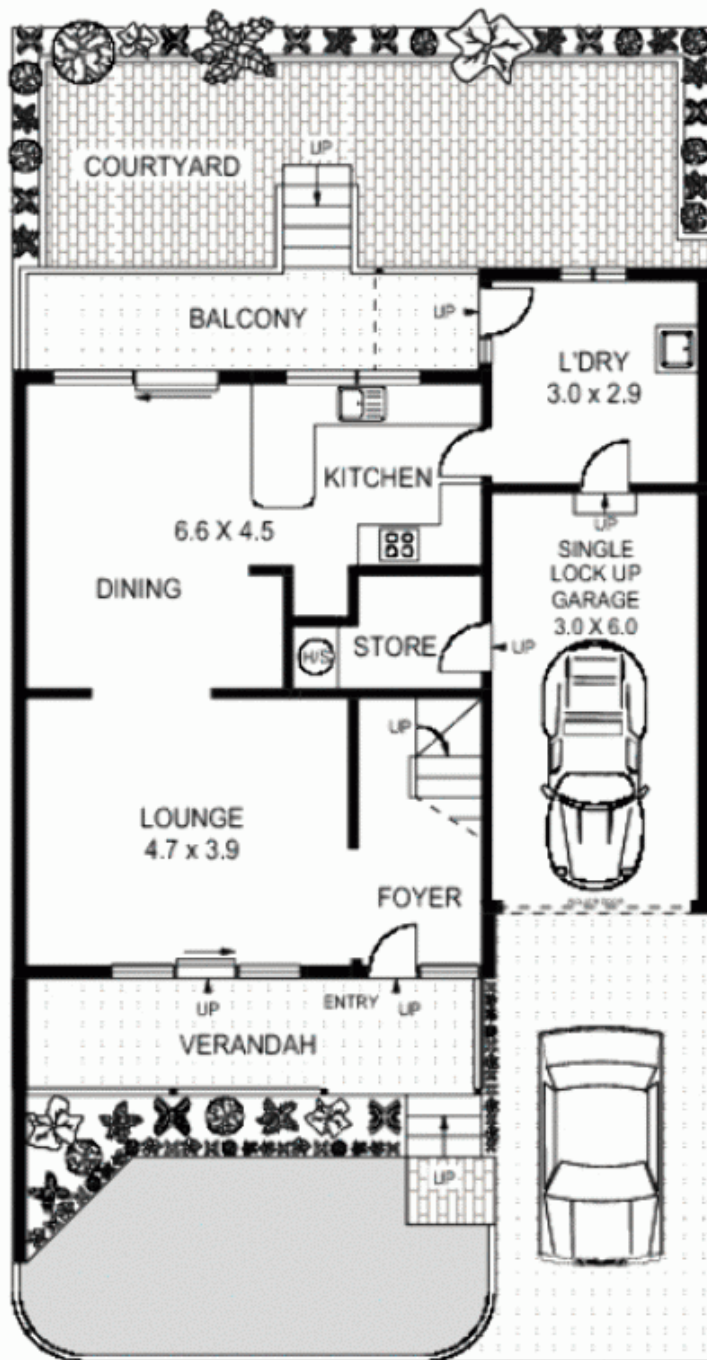
3 1 1

- Quick access to the city via major arterial road
- Close to Southgate shopping Centre and Restaurants at Tom Ugly's Bridge
- Walking distance to Fitness First and sports fields
- Excellent bus services to shopping and train stations
- Value for money!

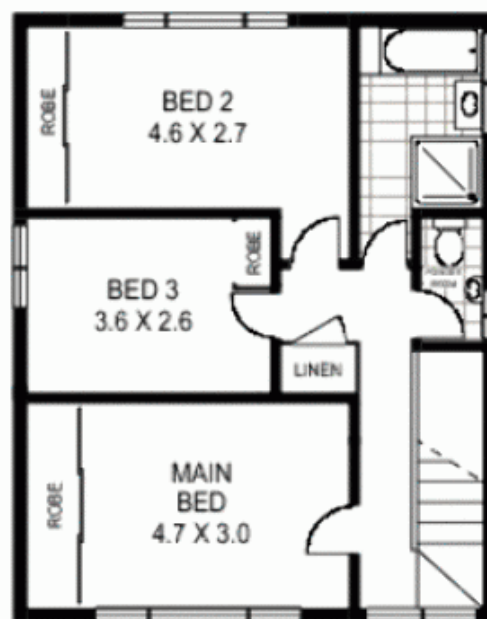
View : <https://www.paynepacific.com.au/sale/nsw/sutherland/sylvania/residential/townhouse/5873109>

This modern townhouse looks modest from the outside, but the current owner has a great eye and has given it a full makeover inside that will surprise you with its stylish elegance.

With an emphasis on well-placed splashes of warm colour, combined with clean white, modern lines this two-storey, three bedroom townhouse with open-plan living spaces and modern, uncluttered kitchen, could be straight out of the pages of your favourite glossy interiors magazine.



GROUND FLOOR



FIRST FLOOR

NOTE :- UNDER ROOF
STORAGE AVAILABLE



8/16 - 20 PEMBROKE STREET

SYLVANIA

Floor Plan Disclaimer: Mind the Gap (mtg) floor plans / site plans are intended as a guide only. No representations or warranties of any nature whatsoever are given or intended and any person using this information should always rely on their own enquiries. mtg property marketing services - 1300 133 145 - photography, floor plans, virtual tours, video tours, copywriting, project marketing - www.mindthegap.com.au



Payne Pacific Real Estate gives no guarantees or warranties concerning the accuracy or completeness of the information provided, and accepts no liability for any loss or damage suffered as a result of the use by any person of the contents of this document. It may not be reproduced by any process, electronic or otherwise, in any form, without the prior written permission of Payne Pacific Real Estate, except as permitted under the Copyright Act 1968.