



16/14-16 Banksia Road CARINGBAH NSW

2 1 1

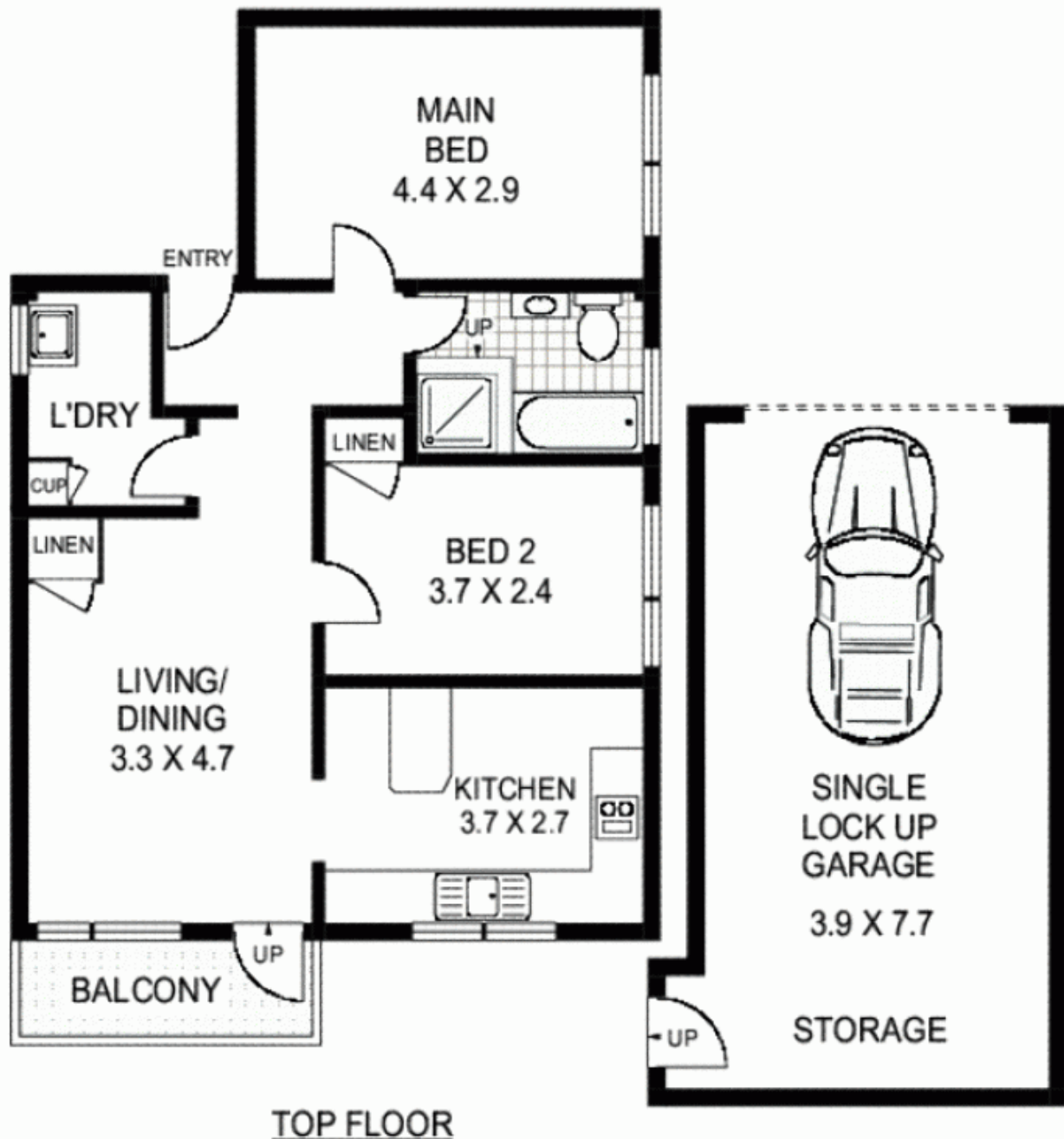
A fabulous first purchase or affordable investment, this apartment offers sheer convenience, especially for commuters, with the train station and local Caringbah shops and supermarkets within just a few moments of its door.

Price : \$ 275,000
View : <https://www.paynepacific.com.au/sale/nsw/sutherland/caringbah/residential/apartment/5873099>

Quietly set at the rear of the top floor of a security building, its comfortable as is yet offers scope to cosmetically enhance if desired to realise its full potential.

Enjoying a light-filled north-westerly aspect with district views, it contains two bedrooms, combined living and dining space opening to a sunny balcony, and a large dine-in kitchen.

Along with a pristine bathroom with separate bath and shower, theres a roomy internal laundry with plenty of



TOP FLOOR



16/14-16 BANKSIA AVENUE

CARINGBAH

Floor Plan Disclaimer: Mind the Gap (ntg) floor plans / site plans are intended as a guide only. No representations or warranties of any nature whatsoever are given or intended and any person using this information should always rely on their own enquiries. ntg property marketing services - 1300 133 145 - photography, floor plans, virtual tours, video tours, copywriting, project marketing - www.mindthegap.com.au



Payne Pacific Real Estate gives no guarantees or warranties concerning the accuracy or completeness of the information provided, and accepts no liability for any loss or damage suffered as a result of the use by any person of the contents of this document. It may not be reproduced by any process, electronic or otherwise, in any form, without the prior written permission of Payne Pacific Real Estate, except as permitted under the Copyright Act 1968.